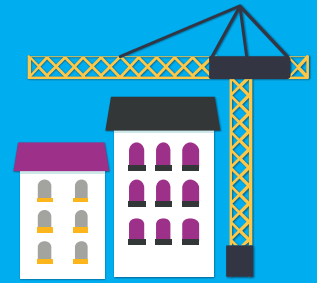
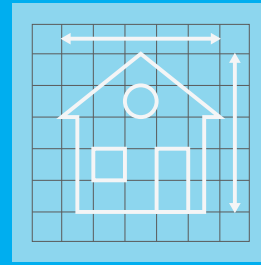


JOB JOURNEY IN ENGINEERING & ARCHITECTURE



NOW

REQUIRES ON-THE-JOB TRAINING, WORK EXPERIENCE, AND/OR A HIGH SCHOOL DIPLOMA

PRODUCTION, PLANNING, AND EXPEDITING CLERKS

INSPECTORS, TESTERS, SORTERS, SAMPLERS, AND WEIGHERS

WEIGHERS, MEASURERS, CHECKERS, AND SAMPLERS, RECORDKEEPING

MEDIAN HOURLY WAGE

\$20.40

16.14

15.24

NEXT

REQUIRES 2 - 4 YEARS OF EDUCATION BEYOND HIGH SCHOOL

CONSTRUCTION MANAGERS

ENGINEERING TECHNICIANS, EXCEPT DRAFTERS

COMPUTER NETWORK SUPPORT SPECIALISTS

ARCHITECTURAL AND CIVIL DRAFTERS

BOOKKEEPING, ACCOUNTING, AND AUDITING CLERKS

\$40.23

28.84

25.20

23.92

17.60

LATER

REQUIRES 4 OR MORE YEARS OF EDUCATION BEYOND HIGH SCHOOL PLUS WORK EXPERIENCE

ENGINEERING MANAGERS

CIVIL ENGINEERS

MECHANICAL ENGINEERS

ARCHITECTS, EXCEPT LANDSCAPE AND NAVAL

LANDSCAPE ARCHITECTS

SURVEYORS

\$60.54

39.01

41.22

36.25

28.56

27.11

SOURCE: FLORIDA DEPARTMENT OF ECONOMIC OPPORTUNITY, BUREAU OF LABOR MARKET STATISTICS, 2017 HOURLY WAGE.

FLORIDA DEPARTMENT OF ECONOMIC OPPORTUNITY

107 EAST MADISON STREET, MSC G-20, TALLAHASSEE, FL 32399-4111

PHONE: 850-245-7205 TOLL FREE: 866-537-3715

WWW.FLORIDAJOBS.ORG/LMS



An equal opportunity employer program. Auxiliary aids and services are available upon request to individuals with disabilities. All voice telephone numbers may be reached by persons using TTY/TDD equipment via the Florida Relay Service at 711.