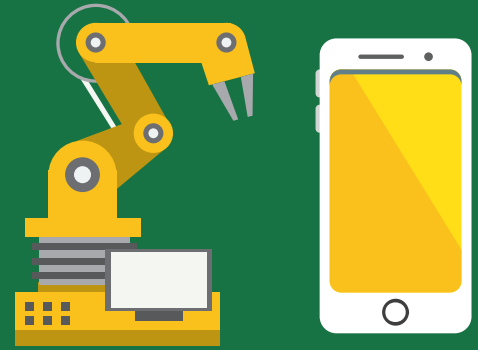


JOB JOURNEY IN ELECTRONICS MANUFACTURING



NOW

REQUIRES ON-THE-JOB TRAINING, WORK EXPERIENCE, AND/OR A HIGH SCHOOL DIPLOMA

INSPECTORS, TESTERS, SORTERS, SAMPLERS, AND WEIGHERS
EXTRUDING AND DRAWING MACHINE OPERATORS, METAL AND PLASTIC
ELECTRICAL AND ELECTRONIC EQUIPMENT ASSEMBLERS
TEAM ASSEMBLERS

MEDIAN HOURLY WAGE

\$16.14
14.20
14.40
13.34

NEXT

REQUIRES 2 - 4 YEARS OF EDUCATION BEYOND HIGH SCHOOL

NETWORK AND COMPUTER SYSTEMS ARCHITECTS AND ADMINISTRATORS
FIRST-LINE SUPERVISORS/MANAGERS OF PRODUCTION AND OPERATING WORKERS
ELECTRICAL AND ELECTRONIC ENGINEERING TECHNICIANS
MECHANICAL ENGINEERING TECHNICIANS
INDUSTRIAL ENGINEERING TECHNICIANS
COMPUTER, AUTOMATED TELLER, AND OFFICE MACHINE REPAIRERS

\$37.87
26.89
27.58
23.75
21.62
17.09

LATER

REQUIRES 4 OR MORE YEARS OF EDUCATION BEYOND HIGH SCHOOL PLUS WORK EXPERIENCE

COMPUTER AND INFORMATION SYSTEMS MANAGERS
COMPUTER HARDWARE ENGINEERS
ELECTRONICS ENGINEERS, EXCEPT COMPUTER
ELECTRICAL ENGINEERS
INDUSTRIAL ENGINEERS

\$62.89
45.58
43.25
41.62
33.85

SOURCE: FLORIDA DEPARTMENT OF ECONOMIC OPPORTUNITY, BUREAU OF LABOR MARKET STATISTICS, 2017 HOURLY WAGE.

FLORIDA DEPARTMENT OF ECONOMIC OPPORTUNITY
107 EAST MADISON STREET, MSC G-20, TALLAHASSEE, FL 32399-4111
PHONE: 850-245-7205 TOLL FREE: 866-537-3715
WWW.FLORIDAJOBS.ORG/LMS



An equal opportunity employer program. Auxiliary aids and services are available upon request to individuals with disabilities.
All voice telephone numbers may be reached by persons using TTY/TDD equipment via the Florida Relay Service at 711.