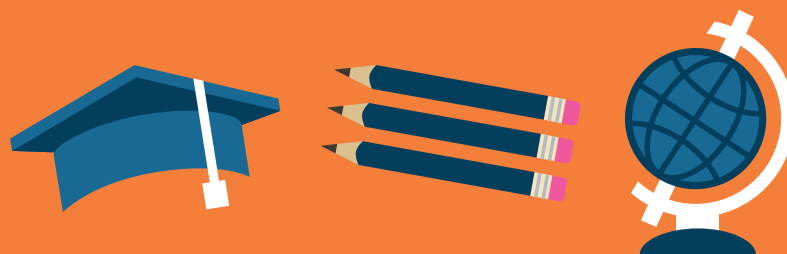


JOB JOURNEY IN EDUCATION



NOW

REQUIRES ON-THE-JOB TRAINING, WORK EXPERIENCE, AND/OR A HIGH SCHOOL DIPLOMA

PAYROLL AND TIMEKEEPING CLERKS

OFFICE AND ADMINISTRATIVE SUPPORT WORKERS, ALL OTHER

FILE CLERKS

RECEPTIONISTS AND INFORMATION CLERKS

COOKS, INSTITUTION AND CAFETERIA

MEDIAN HOURLY WAGE

\$19.28

17.25

13.73

14.24

12.68

NEXT

REQUIRES 2 - 4 YEARS OF EDUCATION BEYOND HIGH SCHOOL

VOCATIONAL EDUCATION TEACHERS, POSTSECONDARY

COMPUTER USER SUPPORT SPECIALISTS

BUS AND TRUCK MECHANICS AND DIESEL ENGINE SPECIALISTS

\$27.65

20.85

21.95

LATER

REQUIRES 4 OR MORE YEARS OF EDUCATION BEYOND HIGH SCHOOL PLUS WORK EXPERIENCE

EDUCATION ADMINISTRATORS, ELEMENTARY AND SECONDARY SCHOOL

EDUCATION TEACHERS, POSTSECONDARY

SPECIAL EDUCATION TEACHERS, SECONDARY SCHOOL

LIBRARIANS

COUNSELORS

\$46.00

48.11

29.75

27.20

19.78

SOURCE: FLORIDA DEPARTMENT OF ECONOMIC OPPORTUNITY, BUREAU OF LABOR MARKET STATISTICS, 2017 HOURLY WAGE.

FLORIDA DEPARTMENT OF ECONOMIC OPPORTUNITY

107 EAST MADISON STREET, MSC G-20, TALLAHASSEE, FL 32399-4111

PHONE: 850-245-7205 TOLL FREE: 866-537-3715

WWW.FLORIDAJOBS.ORG/LMS



An equal opportunity employer program. Auxiliary aids and services are available upon request to individuals with disabilities. All voice telephone numbers may be reached by persons using TTY/TDD equipment via the Florida Relay Service at 711.