

Summary of Employment, Demographics, and Commuting Patterns for Levy County, Florida



FLORIDA DEPARTMENT *of*
ECONOMIC OPPORTUNITY

October 2019

Contents

Labor Shed Analysis 3

OnTheMap, Census Bureau..... 3

Florida Department of Economic Opportunity, Bureau of Workforce Statistics and Economic Research (WSER) 3

Executive Summary 4

People QuickFacts 5

Business and Geography QuickFacts 7

Labor Force, Employment, and Unemployment 7

Population 7

Where Workers Work in Levy County 8

Work Area Profile Summary 9

Work Area Profile Summary - Demographics 10

Where Workers Live in Levy County 11

Home Area Profile Summary 12

Home Area Profile Summary - Demographics 13

Labor Inflow/Outflow Map 14

Labor Inflow/Outflow Summary 15

Work Destination Summary 17

Home Destination Summary 18

Labor Shed Analysis

A labor shed analysis is defined as where workers work and where workers live relative to a user-defined selection area. This analysis helps to determine where a labor market draws its commuting workers. Labor shed studies can draw comparisons between various geographies including state, Congressional District, Metropolitan Statistical Area (MSA), county, Workforce Investment Area (WIA), Zip Code, and Census tract. By indicating how many of the selection area workers work outside the area, labor sheds can help identify potential pools of workers who would be available for work in the user-defined area.

Labor shed studies provide economic developers and existing or prospective employers a tool to understand the local labor market and make informed expansion and site selection decisions. In addition, labor shed studies can help indicate potential impacts from environmental, social, or economic incidents.

OnTheMap, Census Bureau

OnTheMap is a mapping and reporting tool developed by the U.S. Census Bureau showing employment and home locations of workers with companion reports for user-defined areas. It is the first synthetic data product released by the Census Bureau. OnTheMap is an important tool for Florida to perform labor inflow/outflow analyses and provide commuting data to planning and economic development agencies as well as Regional Workforce Boards. OnTheMap data is also used by the Department of Economic Opportunity to help quantify natural disaster impacts for emergency management agencies based on where workers live and where they work.

OnTheMap integrates existing data from state-supplied administrative records on workers and employers with existing federal censuses, surveys, and other administrative records. The state Labor Market Information (LMI) agencies supply key data from unemployment wage records and from businesses each quarter. The Census Bureau merges the state-supplied data with current demographic information to produce the data found in OnTheMap. By combining data from different administrative sources, censuses, and surveys, the Census Bureau produces local employment information that was not previously available.

Florida Department of Economic Opportunity, Bureau of Workforce Statistics and Economic Research (WSER)

The Florida Department of Economic Opportunity, Bureau of Workforce Statistics and Economic Research (WSER), produces, analyzes, and distributes labor statistics to improve economic decision making. These data are produced as part of the federal/state cooperative statistical program with the U.S. Department of Labor, Bureau of Labor Statistics, and the Employment and Training Administration.

Executive Summary

The analysis of workforce and demographic characteristics, including commuting patterns of Levy County was conducted to provide economic data on the population and labor force living or working in the county. The report is useful for detailing where workers work and live in order to align resources. This report includes population, labor force, and demographics for Levy County.

Workers employed in Levy County are clustered in the Retail Trade (15.6%), and Construction (13.3%) industries. Workers living in Levy County are concentrated in the Health Care and Social Assistance (14.2%), and Retail Trade (13.1%) industries.

A detailed examination of commuting patterns for Levy County shows that the county has a net outflow of -4,990 workers. Using the latest annual Census data available, there were 8,472 workers employed in Levy County and 13,462 workers living in Levy County. Of the workers who lived in the county, 9,643 workers (71.6%) were employed outside the county.

With 71.6% of workers who reside in Levy County employed outside the county, Levy County had the 14th highest outflow ranking among Florida counties. Glades County (89.0%) had the highest outflow rate, followed by Union County (86.3%), and Gilchrist County (85.1%). Miami-Dade County (23.4%), Duval County (26.0%), and Escambia County (28.0%) had the lowest worker outflow rates.

Of the 9,643 Levy County workers employed outside the county, the top destination counties are Alachua County (3,255 workers), Marion County (1,366 workers), and Duval County (498 workers). Of the 4,653 Levy County workers living outside the county, the top origin counties are Alachua County (772 workers), Marion County (750 workers), and Citrus County (404 workers).

Levy County

People QuickFacts

	Levy County	Florida	United States
Population			
Population estimates, July 1, 2018, (V2018)	40,770	21,299,325	327,167,434
Population estimates base, April 1, 2010, (V2018)	40,801	18,804,580	308,758,105
Population, percent change - April 1, 2010 (estimates base) to July 1, 2018, (V2018)	-0.1%	13.3%	6.0%
Population, Census, April 1, 2010	40,801	18,801,310	308,745,538
Age and Sex			
Persons under 5 years, percent	5.1%	5.4%	6.1%
Persons under 18 years, percent	19.5%	19.9%	22.4%
Persons 65 years and over, percent	24.8%	20.5%	16.0%
Female persons, percent	51.2%	51.1%	50.8%
Race and Hispanic Origin			
White alone, percent	87.1%	77.3%	76.5%
Black or African American alone, percent(a)	9.4%	16.9%	13.4%
American Indian and Alaska Native alone, percent(a)	0.7%	0.5%	1.3%
Asian alone, percent(a)	0.7%	3.0%	5.9%
Native Hawaiian and Other Pacific Islander alone, percent(a)	0.1%	0.1%	0.2%
Two or More Races, percent	1.9%	2.2%	2.7%
Hispanic or Latino, percent(b)	8.6%	26.1%	18.3%
White alone, not Hispanic or Latino, percent	79.5%	53.5%	60.4%
Population Characteristics			
Veterans, 2013-2017	4,553	1,454,632	18,939,219
Foreign born persons, percent, 2013-2017	3.7%	20.2%	13.4%
Housing			
Housing units, July 1, 2018, (V2018)	20,661	9,547,305	138,537,078
Owner-occupied housing unit rate, 2013-2017	75.0%	64.8%	63.8%
Median value of owner-occupied housing units, 2013-2017	\$88,700	\$178,700	\$193,500
Median selected monthly owner costs -with a mortgage, 2013-2017	\$994	\$1,432	\$1,515
Median selected monthly owner costs -without a mortgage, 2013-2017	\$299	\$475	\$474
Median gross rent, 2013-2017	\$691	\$1,077	\$982
Building permits, 2018	176	144,427	1,328,827
Legend			
The vintage year (e.g., V2016) refers to the final year of the series (2010 thru 2016). Different vintage years of estimates are not comparable.			
Fact Notes			
(a) Includes persons reporting only one race			
(b) Hispanics may be of any race, so also are included in applicable race categories			
(c) Economic Census - Puerto Rico data are not comparable to U.S. Economic Census data			
Value Flags			
"-." No or too few sample observations were available to compute an estimate.			
"D" Suppressed to avoid disclosure of confidential information			
"F" Fewer than 25 firms			
"NA" Not available			
"S" Suppressed; does not meet publication standards			
"Z" Value greater than zero but less than half unit of measure shown			

Source: U.S. Census Bureau, State & County QuickFacts.

Levy County

People QuickFacts (continued)

	Levy County	Florida	United States
Families & Living Arrangements			
Households, 2013-2017	15,806	7,510,882	118,825,921
Persons per household, 2013-2017	2.49	2.64	2.63
Living in same house 1 year ago, percent of persons age 1 year+, 2013-2017	85.6%	84.1%	85.4%
Language other than English spoken at home, percent of persons age 5 years+, 2013-2017	6.5%	28.7%	21.3%
Computer and Internet Use			
Households with a computer, percent, 2013-2017	79.7%	88.1%	87.2%
Households with a broadband Internet subscription, percent, 2013-2017	59.3%	78.6%	78.1%
Education			
High school graduate or higher, percent of persons age 25 years+, 2013-2017	83.5%	87.6%	87.3%
Bachelor's degree or higher, percent of persons age 25 years+, 2013-2017	11.9%	28.5%	30.9%
Health			
With a disability, under age 65 years, percent, 2013-2017	13.7%	8.6%	8.7%
Persons without health insurance, under age 65 years, percent	18.0%	16.0%	10.0%
Economy			
In civilian labor force, total, percent of population age 16 years+, 2013-2017	49.2%	58.4%	63.0%
In civilian labor force, female, percent of population age 16 years+, 2013-2017	46.6%	54.1%	58.2%
Total accommodation and food services sales, 2012 (\$1,000)(c)	28,812	49,817,925	708,138,598
Total health care and social assistance receipts/revenue, 2012 (\$1,000)(c)	35,335	124,061,425	2,040,441,203
Total manufacturers shipments, 2012 (\$1,000)(c)	D	96,924,106	5,696,729,632
Total merchant wholesaler sales, 2012 (\$1,000)(c)	D	252,626,608	5,208,023,478
Total retail sales, 2012 (\$1,000)(c)	360,765	273,867,145	4,219,821,871
Total retail sales per capita, 2012(c)	\$9,013	\$14,177	\$13,443
Transportation			
Mean travel time to work (minutes), workers age 16 years+, 2013-2017	30.0	27.0	26.4
Income & Poverty			
Median household income (in 2017 dollars), 2013-2017	\$36,554	\$50,883	\$57,652
Per capita income in past 12 months (in 2017 dollars), 2013-2017	\$21,043	\$28,774	\$31,177
Persons in poverty, percent	20.8%	13.6%	11.8%
Legend			
The vintage year (e.g., V2016) refers to the final year of the series (2010 thru 2016). Different vintage years of estimates are not comparable.			
<i>Fact Notes</i>			
(a) Includes persons reporting only one race			
(b) Hispanics may be of any race, so also are included in applicable race categories			
(c) Economic Census - Puerto Rico data are not comparable to U.S. Economic Census data			
<i>Value Flags</i>			
"-" No or too few sample observations were available to compute an estimate.			
"D" Suppressed to avoid disclosure of confidential information			
"F" Fewer than 25 firms			
"NA" Not available			
"S" Suppressed; does not meet publication standards			
"Z" Value greater than zero but less than half unit of measure shown			

Source: U.S. Census Bureau, State & County QuickFacts.

Levy County

Business and Geography QuickFacts

	Levy County	Florida	United States
Businesses			
Total employer establishments, 2016	722	546,218	7,757,807
Total employment, 2016	5,867	8,169,642	126,752,238
Total annual payroll, 2016 (\$1,000)	177,028	363,336,322	6,435,142,055
Total employment, percent change, 2015-2016	5.8%	5.0%	2.1%
Total nonemployer establishments, 2017	2,898	2,245,127	25,701,671
All firms, 2012	2,883	2,100,187	27,626,360
Men-owned firms, 2012	1,425	1,084,885	14,844,597
Women-owned firms, 2012	1,092	807,817	9,878,397
Minority-owned firms, 2012	496	926,112	7,952,386
Nonminority-owned firms, 2012	2,291	1,121,749	18,987,918
Veteran-owned firms, 2012	320	185,756	2,521,682
Nonveteran-owned firms, 2012	2,401	1,846,686	24,070,685
Geography			
Population per square mile, 2010	36.5	350.6	87.4
Land area in square miles, 2010	1,118.21	53,624.76	3,531,905.43
FIPS Code	12075	12	00

Source: U.S. Census Bureau, State & County QuickFacts.

Labor Force, Employment, and Unemployment

	August 2019				August 2018			
	LABOR	EMPLOY-	UNEMPLOYMENT		LABOR	EMPLOY-	UNEMPLOYMENT	
	FORCE	MENT	LEVEL	RATE (%)	FORCE	MENT	LEVEL	RATE (%)
Workforce Region 10	204,412	195,384	9,028	4.4	199,479	190,367	9,112	4.6
Citrus County	48,376	45,854	2,522	5.2	47,580	45,050	2,530	5.3
Levy County	16,970	16,296	674	4.0	16,686	16,024	662	4.0
Marion County	139,066	133,234	5,832	4.2	135,213	129,293	5,920	4.4
Florida	10,455,000	10,086,000	368,000	3.5	10,184,000	9,811,000	373,000	3.7
United States	164,019,000	157,816,000	6,203,000	3.8	161,909,000	155,539,000	6,370,000	3.9

Source: U.S. Department of Labor, Bureau of Labor Statistics, Local Area Unemployment Statistics.

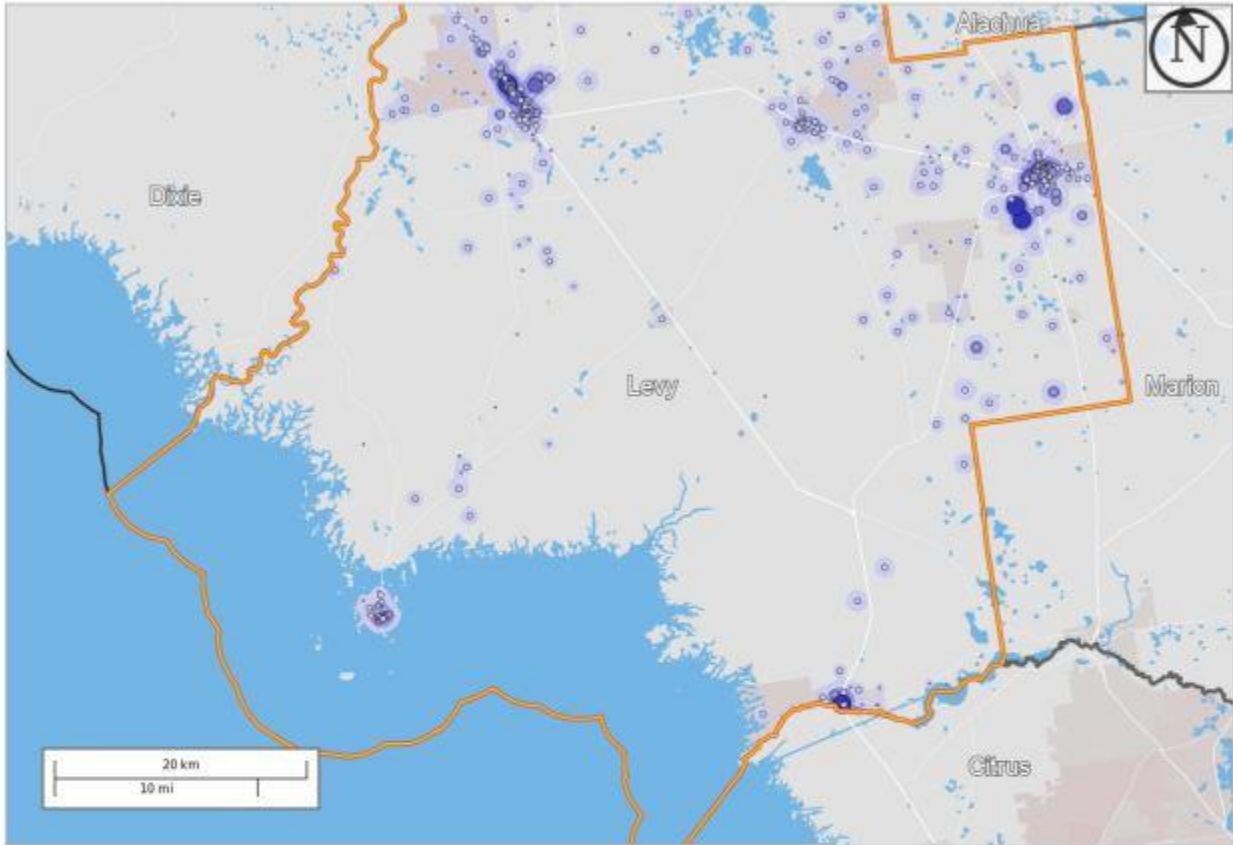
Population

	Population Estimate (as of July 1)							
	2011	2012	2013	2014	2015	2016	2017	2018
Workforce Region 10	512,182	512,901	513,384	516,192	522,245	530,446	539,535	548,676
Citrus County	139,756	139,175	138,830	138,833	140,311	142,850	145,512	147,929
Levy County	40,151	39,826	39,437	39,302	39,599	39,829	40,306	40,770
Marion County	332,275	333,900	335,117	338,057	342,335	347,767	353,717	359,977
Florida	19,093,352	19,326,230	19,563,166	19,860,330	20,224,249	20,629,982	20,976,812	21,299,325
United States	311,580,000	313,874,210	316,057,720	318,386,420	320,742,670	323,071,340	325,147,120	327,167,430
	9	8	7	1	3	2	1	4

Source: U.S. Census Bureau, Population Division.

Levy County

Where Workers Work in Levy County



Map Legend

- Job Density [Jobs/Sq. Mile]**
- 5 - 54
 - 55 - 203
 - 204 - 450
 - 451 - 797
 - 798 - 1,243

- Job Count [Jobs/Census Block]**
- 1 - 4
 - 5 - 27
 - 28 - 91
 - 92 - 215
 - 216 - 419

- Selection Areas**
- Analysis Selection



Source: U.S. Census Bureau, OnTheMap Application and Longitudinal Employer-Household Dynamics program.

Levy County

Work Area Profile Summary

	Count	Share
Total Primary Jobs	8,472	100.0%
Jobs by Worker Age		
Age 29 or younger	1,728	20.4%
Age 30 to 54	4,484	52.9%
Age 55 or older	2,260	26.7%
Jobs by Earnings		
\$1,250 per month or less	1,990	23.5%
\$1,251 to \$3,333 per month	4,170	49.2%
More than \$3,333 per month	2,312	27.3%
Jobs by NAICS Industry Sector		
Agriculture, Forestry, Fishing and Hunting	406	4.8%
Mining, Quarrying, and Oil and Gas Extraction	29	0.3%
Utilities	49	0.6%
Construction	1,127	13.3%
Manufacturing	740	8.7%
Wholesale Trade	233	2.8%
Retail Trade	1,318	15.6%
Transportation and Warehousing	151	1.8%
Information	22	0.3%
Finance and Insurance	210	2.5%
Real Estate and Rental and Leasing	98	1.2%
Professional, Scientific, and Technical Services	232	2.7%
Management of Companies and Enterprises	46	0.5%
Administration & Support, Waste Management and Remediation	162	1.9%
Educational Services	1,085	12.8%
Health Care and Social Assistance	604	7.1%
Arts, Entertainment, and Recreation	140	1.7%
Accommodation and Food Services	715	8.4%
Other Services (excluding Public Administration)	165	1.9%
Public Administration	940	11.1%

Source: U.S. Census Bureau, OnTheMap Application and Longitudinal Employer-Household Dynamics program.

Levy County

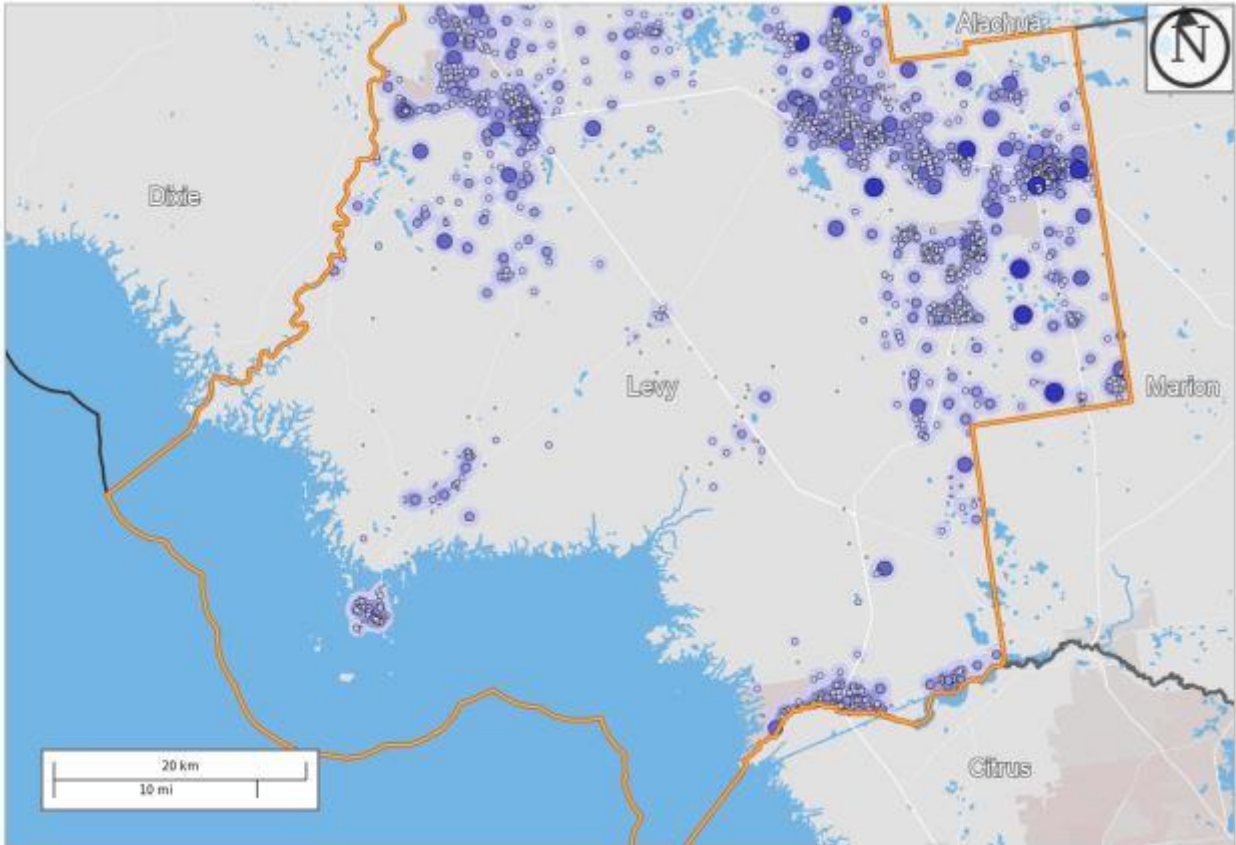
Work Area Profile Summary - Demographics

Jobs by Worker Race		
White Alone	7,280	85.9%
Black or African American Alone	924	10.9%
American Indian or Alaska Native Alone	41	0.5%
Asian Alone	127	1.5%
Native Hawaiian or Other Pacific Islander Alone	6	0.1%
Two or More Race Groups	94	1.1%
Jobs by Worker Ethnicity		
Not Hispanic or Latino	7,893	93.2%
Hispanic or Latino	579	6.8%
Jobs by Worker Educational Attainment		
Less than high school	974	11.5%
High school or equivalent, no college	2,246	26.5%
Some college or Associate degree	2,200	26.0%
Bachelor's degree or advanced degree	1,324	15.6%
Educational attainment not available (workers aged 29 or younger)	1,728	20.4%
Jobs by Worker Sex		
Male	4,503	53.2%
Female	3,969	46.8%

Source: U.S. Census Bureau, OnTheMap Application and Longitudinal Employer-Household Dynamics program.

Levy County

Where Workers Live in Levy County



Map Legend

<p>Job Density [Jobs/Sq. Mile]</p> <ul style="list-style-type: none"> ■ 5 - 25 ■ 26 - 85 ■ 86 - 185 ■ 186 - 325 ■ 326 - 505 	<p>Job Count [Jobs/Census Block]</p> <ul style="list-style-type: none"> ● 1 - 2 ● 3 - 9 ● 10 - 29 ● 30 - 67 ● 68 - 131 <p>Selection Areas</p> <ul style="list-style-type: none"> ★ Analysis Selection
---	---



Source: U.S. Census Bureau, OnTheMap Application and Longitudinal Employer-Household Dynamics program.

Levy County

Home Area Profile Summary

	Count	Share
Total Primary Jobs	13,462	100.0%
Jobs by Worker Age		
Age 29 or younger	3,079	22.9%
Age 30 to 54	6,988	51.9%
Age 55 or older	3,395	25.2%
Jobs by Earnings		
\$1,250 per month or less	2,971	22.1%
\$1,251 to \$3,333 per month	6,355	47.2%
More than \$3,333 per month	4,136	30.7%
Jobs by NAICS Industry Sector		
Agriculture, Forestry, Fishing and Hunting	528	3.9%
Mining, Quarrying, and Oil and Gas Extraction	19	0.1%
Utilities	88	0.7%
Construction	1,122	8.3%
Manufacturing	825	6.1%
Wholesale Trade	416	3.1%
Retail Trade	1,764	13.1%
Transportation and Warehousing	375	2.8%
Information	121	0.9%
Finance and Insurance	419	3.1%
Real Estate and Rental and Leasing	196	1.5%
Professional, Scientific, and Technical Services	554	4.1%
Management of Companies and Enterprises	80	0.6%
Administration & Support, Waste Management and Remediation	606	4.5%
Educational Services	1,533	11.4%
Health Care and Social Assistance	1,916	14.2%
Arts, Entertainment, and Recreation	225	1.7%
Accommodation and Food Services	1,195	8.9%
Other Services (excluding Public Administration)	353	2.6%
Public Administration	1,127	8.4%

Source: U.S. Census Bureau, OnTheMap Application and Longitudinal Employer-Household Dynamics program.

Levy County

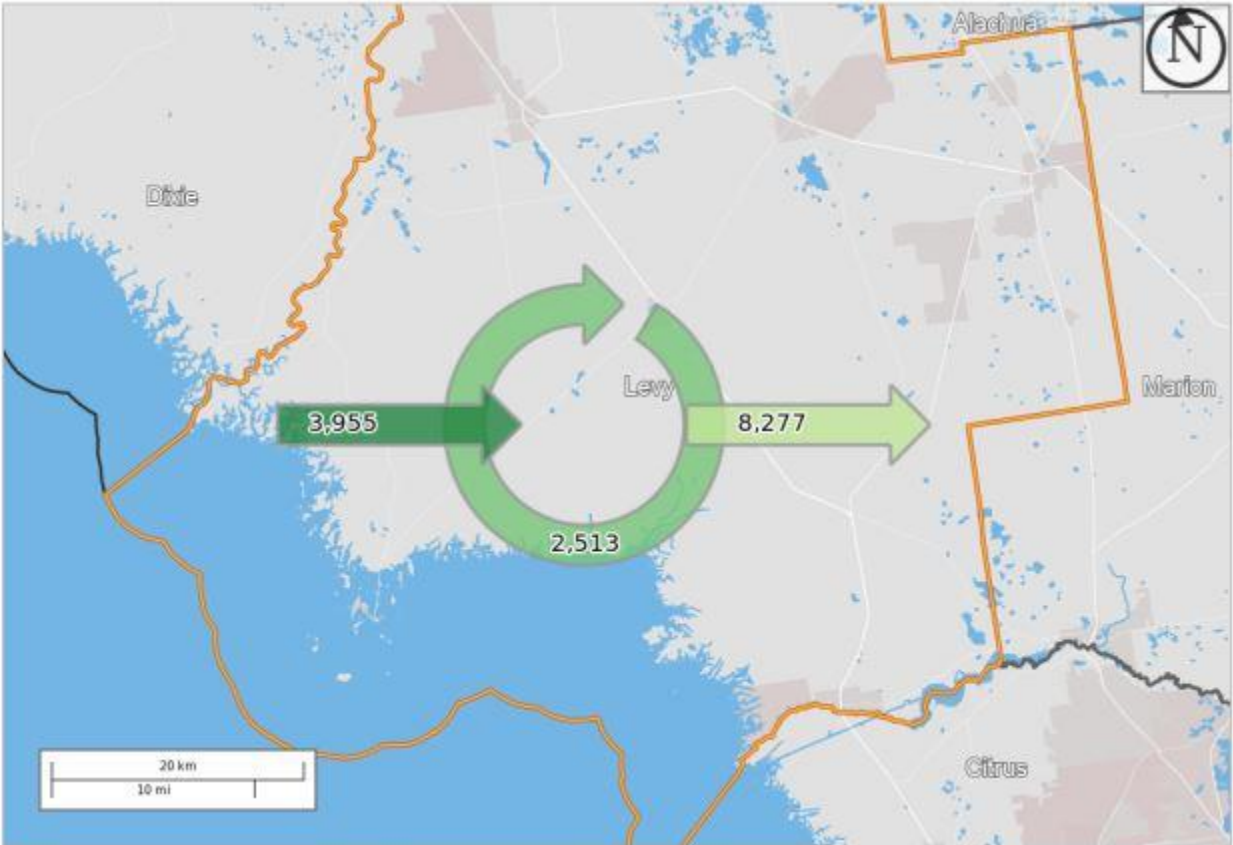
Home Area Profile Summary - Demographics

Jobs by Worker Race		
White Alone	11,565	85.9%
Black or African American Alone	1,488	11.1%
American Indian or Alaska Native Alone	68	0.5%
Asian Alone	174	1.3%
Native Hawaiian or Other Pacific Islander Alone	13	0.1%
Two or More Race Groups	154	1.1%
Jobs by Worker Ethnicity		
Not Hispanic or Latino	12,460	92.6%
Hispanic or Latino	1,002	7.4%
Jobs by Worker Educational Attainment		
Less than high school	1,395	10.4%
High school or equivalent, no college	3,244	24.1%
Some college or Associate degree	3,401	25.3%
Bachelor's degree or advanced degree	2,343	17.4%
Educational attainment not available (workers aged 29 or younger)	3,079	22.9%
Jobs by Worker Sex		
Male	6,698	49.8%
Female	6,764	50.2%

Source: U.S. Census Bureau, OnTheMap Application and Longitudinal Employer-Household Dynamics program.

Levy County

Labor Inflow/Outflow Map



Map Legend

Selection Areas
 ★ Analysis Selection

Inflow/Outflow
 ◆ Employed and Live in Selection Area
 ◆ Employed in Selection Area, Live Outside
 ◆ Live in Selection Area, Employed Outside
 ◆ Outside
 Note: Overlay arrows do not indicate directionality of worker flow between home and employment locations.



Source: U.S. Census Bureau, OnTheMap Application and Longitudinal Employer-Household Dynamics program.

Of the 8,472 people who are employed in Levy County, 3,819 (45.1%) live and work in the county. There are 4,653 (54.9%) workers who live outside Levy County and work within the county. Of the 13,462 workers who live within Levy County, 9,643 (71.6%) residents work outside the county. There is a net outflow of -4,990 workers from Levy County.

Levy County

Labor Inflow/Outflow Summary

Selection Area Labor Market Size (Primary Jobs)	Count	Share
Employed in the Selection Area	8,472	100.0%
Living in the Selection Area	13,462	158.9%
Net Job Inflow (+) or Outflow (-)	-4,990	-
In-Area Labor Force Efficiency (Primary Jobs)		
Living in the Selection Area	13,462	100.0%
Living and Employed in the Selection Area	3,819	28.4%
Living in the Selection Area but Employed Outside	9,643	71.6%
In-Area Employment Efficiency (Primary Jobs)		
Employed in the Selection Area	8,472	100.0%
Employed and Living in the Selection Area	3,819	45.1%
Employed in the Selection Area but Living Outside	4,653	54.9%
Outflow Job Characteristics		
External Jobs Filled by Residents	9,643	100.0%
Workers Aged 29 or younger	2,369	24.6%
Workers Aged 30 to 54	4,947	51.3%
Workers Aged 55 or older	2,327	24.1%
Workers Earning \$1,250 per month or less	2,076	21.5%
Workers Earning \$1,251 to \$3,333 per month	4,412	45.8%
Workers Earning More than \$3,333 per month	3,155	32.7%
Workers in the "Goods Producing" Industry Class	1,675	17.4%
Workers in the "Trade, Transportation, and Utilities" Industry Class	2,110	21.9%
Workers in the "All Other Services" Industry Class	5,858	60.7%

Source: U.S. Census Bureau, OnTheMap Application and Longitudinal Employer-Household Dynamics program.

Levy County

Labor Inflow/Outflow Summary (continued)

Inflow Job Characteristics (Primary Jobs)	Count	Share
Internal Jobs Filled by Outside Workers	4,653	100.0%
Workers Aged 29 or younger	1,018	21.9%
Workers Aged 30 to 54	2,443	52.5%
Workers Aged 55 or older	1,192	25.6%
Workers Earning \$1,250 per month or less	1,095	23.5%
Workers Earning \$1,251 to \$3,333 per month	2,227	47.9%
Workers Earning More than \$3,333 per month	1,331	28.6%
Workers in the "Goods Producing" Industry Class	1,483	31.9%
Workers in the "Trade, Transportation, and Utilities" Industry Class	1,218	26.2%
Workers in the "All Other Services" Industry Class	1,952	42.0%
Interior Flow Job Characteristics (Primary Jobs)		
Internal Jobs Filled by Residents	3,819	100.0%
Workers Aged 29 or younger	710	18.6%
Workers Aged 30 to 54	2,041	53.4%
Workers Aged 55 or older	1,068	28.0%
Workers Earning \$1,250 per month or less	895	23.4%
Workers Earning \$1,251 to \$3,333 per month	1,943	50.9%
Workers Earning More than \$3,333 per month	981	25.7%
Workers in the "Goods Producing" Industry Class	819	21.4%
Workers in the "Trade, Transportation, and Utilities" Industry Class	533	14.0%
Workers in the "All Other Services" Industry Class	2,467	64.6%

Source: U.S. Census Bureau, OnTheMap Application and Longitudinal Employer-Household Dynamics program.

Work Destination Summary

Where Workers are Employed Who Live in Levy County

	Count	Share
Total Primary Jobs	13,462	100.0%
Job Counts by Counties Where Workers are Employed - Primary Jobs		
Levy County, FL	3,819	28.4%
Alachua County, FL	3,255	24.2%
Marion County, FL	1,366	10.1%
Duval County, FL	498	3.7%
Gilchrist County, FL	485	3.6%
Citrus County, FL	474	3.5%
Orange County, FL	347	2.6%
Hillsborough County, FL	287	2.1%
Leon County, FL	201	1.5%
Columbia County, FL	187	1.4%
Pinellas County, FL	161	1.2%
Dixie County, FL	148	1.1%
Lake County, FL	122	0.9%
Polk County, FL	113	0.8%
Clay County, FL	103	0.8%
Volusia County, FL	103	0.8%
Seminole County, FL	93	0.7%
Suwannee County, FL	84	0.6%
St. Johns County, FL	80	0.6%
Miami-Dade County, FL	79	0.6%
Sumter County, FL	77	0.6%
Pasco County, FL	70	0.5%
Broward County, FL	68	0.5%
Putnam County, FL	65	0.5%
Hernando County, FL	64	0.5%
All Other Locations	1,113	8.3%

Source: U.S. Census Bureau, OnTheMap Application and Longitudinal Employer-Household Dynamics program.

Home Destination Summary

Where Workers Live Who are Employed in Levy County

	Count	Share
Total Primary Jobs	8,472	100.0%
Job Counts by Counties Where Workers Live - Primary Jobs		
Levy County, FL	3,819	45.1%
Alachua County, FL	772	9.1%
Marion County, FL	750	8.9%
Citrus County, FL	404	4.8%
Gilchrist County, FL	380	4.5%
Dixie County, FL	337	4.0%
Hernando County, FL	146	1.7%
Duval County, FL	135	1.6%
Pasco County, FL	120	1.4%
Suwannee County, FL	100	1.2%
Hillsborough County, FL	95	1.1%
Orange County, FL	93	1.1%
Columbia County, FL	92	1.1%
Pinellas County, FL	88	1.0%
Sumter County, FL	88	1.0%
Lake County, FL	86	1.0%
Volusia County, FL	83	1.0%
Leon County, FL	55	0.6%
Brevard County, FL	54	0.6%
Polk County, FL	51	0.6%
St. Johns County, FL	40	0.5%
Flagler County, FL	35	0.4%
Seminole County, FL	35	0.4%
Escambia County, FL	33	0.4%
Lee County, FL	33	0.4%
All Other Locations	548	6.5%

Source: U.S. Census Bureau, OnTheMap Application and Longitudinal Employer-Household Dynamics program.

**Florida Department of Economic Opportunity
Bureau of Workforce Statistics and Economic Research
(WSER)**

**Caldwell Building
MSC G-020
107 E. Madison Street
Tallahassee, Florida 32399-4111
Phone (850) 245-7257**



www.floridajobs.org/wser