

Summary of Employment, Demographics, and Commuting Patterns for Lafayette County, Florida



May 2021

Contents

Labor Shed Analysis	3
OnTheMap, Census Bureau	3
Florida Department of Economic Opportunity, Bureau of Workforce Statistics and Economic Research (WSER)	3
Executive Summary	4
People QuickFacts.....	5
Business and Geography QuickFacts.....	7
Labor Force, Employment, and Unemployment	7
Population	8
Where Workers Work in Lafayette County.....	9
Work Area Profile Summary	10
Work Area Profile Summary - Demographics	11
Where Workers Live in Lafayette County	12
Home Area Profile Summary	13
Home Area Profile Summary - Demographics.....	14
Labor Inflow/Outflow Map	15
Labor Inflow/Outflow Summary	16
Work Destination Summary	18
Home Destination Summary	19

Labor Shed Analysis

A labor shed analysis is defined as where workers work and where workers live relative to a user-defined selection area. This analysis helps to determine where a labor market draws its commuting workers. Labor shed studies can draw comparisons between various geographies including state, Congressional District, Metropolitan Statistical Area (MSA), county, Workforce Investment Area (WIA), Zip Code, and Census tract. By indicating how many of the selection area workers work outside the area, labor sheds can help identify potential pools of workers who would be available for work in the user-defined area.

Labor shed studies provide economic developers and existing or prospective employers a tool to understand the local labor market and make informed expansion and site selection decisions. In addition, labor shed studies can help indicate potential impacts from environmental, social, or economic incidents.

OnTheMap, Census Bureau

OnTheMap is a mapping and reporting tool developed by the U.S. Census Bureau showing employment and home locations of workers with companion reports for user-defined areas. It is the first synthetic data product released by the Census Bureau. OnTheMap is an important tool for Florida to perform labor inflow/outflow analyses and provide commuting data to planning and economic development agencies as well as Regional Workforce Boards. OnTheMap data is also used by the Department of Economic Opportunity to help quantify natural disaster impacts for emergency management agencies based on where workers live and where they work.

OnTheMap integrates existing data from state-supplied administrative records on workers and employers with existing federal censuses, surveys, and other administrative records. The state Labor Market Information (LMI) agencies supply key data from unemployment wage records and from businesses each quarter. The Census Bureau merges the state-supplied data with current demographic information to produce the data found in OnTheMap. By combining data from different administrative sources, censuses, and surveys, the Census Bureau produces local employment information that was not previously available.

Florida Department of Economic Opportunity, Bureau of Workforce Statistics and Economic Research (WSER)

The Florida Department of Economic Opportunity, Bureau of Workforce Statistics and Economic Research (WSER), produces, analyzes, and distributes labor statistics to improve economic decision making. These data are produced as part of the federal/state cooperative statistical program with the U.S. Department of Labor, Bureau of Labor Statistics, and the Employment and Training Administration.

Executive Summary

The analysis of workforce and demographic characteristics, including commuting patterns of Lafayette County was conducted to provide economic data on the population and labor force living or working in the county. The report is useful for detailing where workers work and live in order to align resources. This report includes population, labor force, and demographics for Lafayette County.

Workers employed in Lafayette County are clustered in the Agriculture, Forestry, Fishing and Hunting (18.8%) and Public Administration (16.5%) industries. Workers living in Lafayette County are concentrated in the Health Care and Social Assistance (13.7%) and Retail Trade (13.1%) industries.

A detailed examination of commuting patterns for Lafayette County shows that the county has a net outflow of -1,296 workers. Using the latest annual Census data available, there were 1,215 workers employed in Lafayette County and 2,511 workers living in Lafayette County. Of the workers who lived in the county, 1,766 workers (70.3%) were employed outside the county.

With 70.3% of workers who reside in Lafayette County employed outside the county, Lafayette County was ranked 17th of 67 for the highest outflow rankings among Florida counties. Leon (20.9%) had the lowest outflow rate, followed by Miami-Dade (22.0%) and Duval (25.5%). Glades (85.1%), Jefferson (82.2%), and Union (79.6%) had the highest worker outflow rates.

Of the 1,766 Lafayette County workers employed outside the county, the top destination counties are Suwannee County (351 workers), Alachua County (174 workers), and Columbia County (157 workers). Of the 470 Lafayette County workers living outside the county, the top origin counties are Suwannee County (148 workers), Columbia County (47 workers), and Taylor County (42 workers).

People QuickFacts

	Lafayette County	Florida	United States
Population			
Population estimates, July 1, 2019, (V2019)	8,422	21,477,737	328,239,523
Population estimates base, April 1, 2010, (V2019)	8,868	18,804,564	308,758,105
Population, percent change - April 1, 2010 (estimates base) to July 1, 2019, (V2019)	-5.0%	14.2%	6.3%
Population, Census, April 1, 2010	8,870	18,801,310	308,745,538
Population, Census, April 1, 2020	X	21,538,187	331,449,281
Age and Sex			
Persons under 5 years, percent	4.0%	5.3%	6.0%
Persons under 18 years, percent	19.9%	19.7%	22.3%
Persons 65 years and over, percent	17.3%	20.9%	16.5%
Female persons, percent	44.0%	51.1%	50.8%
Race and Hispanic Origin			
White alone, percent	84.5%	77.3%	76.3%
Black or African American alone, percent(a)	12.7%	16.9%	13.4%
American Indian and Alaska Native alone, percent(a)	0.8%	0.5%	1.3%
Asian alone, percent(a)	0.3%	3.0%	5.9%
Native Hawaiian and Other Pacific Islander alone, percent(a)	0.1%	0.1%	0.2%
Two or More Races, percent	1.6%	2.2%	2.8%
Hispanic or Latino, percent(b)	13.9%	26.4%	18.5%
White alone, not Hispanic or Latino, percent	71.8%	53.2%	60.1%
Population Characteristics			
Veterans, 2015-2019	645	1,440,338	18,230,322
Foreign born persons, percent, 2015-2019	7.0%	20.7%	13.6%
Housing			
Housing units, July 1, 2019, (V2019)	3,411	9,673,682	139,684,244
Owner-occupied housing unit rate, 2015-2019	84.4%	65.4%	64.0%
Median value of owner-occupied housing units, 2015-2019	\$104,700	\$215,300	\$217,500
Median selected monthly owner costs -with a mortgage, 2015-2019	\$1,085	\$1,503	\$1,595
Median selected monthly owner costs -without a mortgage, 2015-2019	\$321	\$505	\$500
Median gross rent, 2015-2019	\$532	\$1,175	\$1,062
Building permits, 2020	34	164,074	1,471,141

Legend

The vintage year (e.g., V2019) refers to the final year of the series (2010 thru 2019). Different vintage years of estimates are not comparable.

Fact Notes

(a) Includes persons reporting only one race

(b) Hispanics may be of any race, so also are included in applicable race categories

Source: U.S. Census Bureau, State & County QuickFacts.

People QuickFacts (continued)

	Lafayette County	Florida	United States
Families & Living Arrangements			
Households, 2015-2019	2,175	7,736,311	120,756,048
Persons per household, 2015-2019	3.27	2.65	2.62
Living in same house 1 year ago, percent of persons age 1 year+, 2015-2019	86.6%	84.5%	85.8%
Language other than English spoken at home, percent of persons age 5 years+, 2015-2019	21.1%	29.4%	21.6%
Computer and Internet Use			
Households with a computer, percent, 2015-2019	82.3%	91.5%	90.3%
Households with a broadband Internet subscription, percent, 2015-2019	77.7%	83.0%	82.7%
Education			
High school graduate or higher, percent of persons age 25 years+, 2015-2019	75.3%	88.2%	88.0%
Bachelor's degree or higher, percent of persons age 25 years+, 2015-2019	11.8%	29.9%	32.1%
Health			
With a disability, under age 65 years, percent, 2015-2019	7.8%	8.6%	8.6%
Persons without health insurance, under age 65 years, percent	19.4%	16.3%	9.5%
Economy			
In civilian labor force, total, percent of population age 16 years+, 2015-2019	39.2%	58.5%	63.0%
In civilian labor force, female, percent of population age 16 years+, 2015-2019	46.6%	54.3%	58.3%
Total accommodation and food services sales, 2012 (\$1,000)(c)	D	49,817,925	708,138,598
Total health care and social assistance receipts/revenue, 2012 (\$1,000)(c)	7,732	124,061,425	2,040,441,203
Total manufacturers shipments, 2012 (\$1,000)(c)	D	96,924,106	5,696,729,632
Total merchant wholesaler sales, 2012 (\$1,000)(c)	D	252,626,608	5,208,023,478
Total retail sales, 2012 (\$1,000)(c)	46,605	273,867,145	4,219,821,871
Total retail sales per capita, 2012(c)	\$5,294	\$14,177	\$13,443
Transportation			
Mean travel time to work (minutes), workers age 16 years+, 2015-2019	28.0	27.8	26.9
Income & Poverty			
Median household income (in 2019 dollars), 2015-2019	\$50,165	\$55,660	\$62,843
Per capita income in past 12 months (in 2019 dollars), 2015-2019	\$20,776	\$31,619	\$34,103
Persons in poverty, percent	18.0%	12.7%	10.5%

Legend

The vintage year (e.g., V2019) refers to the final year of the series (2010 thru 2019). Different vintage years of estimates are not comparable.

Fact Notes

(c) Economic Census - Puerto Rico data are not comparable to U.S. Economic Census data

Value Flags

"D" Suppressed to avoid disclosure of confidential information

Source: U.S. Census Bureau, State & County QuickFacts.

Business and Geography QuickFacts

	Lafayette County	Florida	United States
Businesses			
Total employer establishments, 2019	98	574,51	7,959,103
Total employment, 2019	615	8,860,04	132,989,428
Total annual payroll, 2019 (\$1,000)	17,801	426,908,31	7,428,553,593
Total employment, percent change, 2018-2019	4.9%	2.2%	1.6%
Total nonemployer establishments, 2018	357	2,388,050	26,485,532
All firms, 2012	559	2,100,187	27,626,360
Men-owned firms, 2012	227	1,084,885	14,844,597
Women-owned firms, 2012	137	807,817	9,878,397
Minority-owned firms, 2012	48	926,112	7,952,386
Nonminority-owned firms, 2012	500	1,121,749	18,987,918
Veteran-owned firms, 2012	30	185,756	2,521,682
Nonveteran-owned firms, 2012	518	1,846,686	24,070,685
Geography			
Population per square mile, 2010	16.3	350.6	87.4
Land area in square miles, 2010	543.41	53,624.76	3,531,905.43
FIPS Code	12067	12	1

Source: U.S. Census Bureau, State & County QuickFacts.

Labor Force, Employment, and Unemployment

	April 2021				April 2020			
	LABOR	EMPLOY-	UNEMPLOYMENT		LABOR	EMPLOY-	UNEMPLOYMENT	
	FORCE	MENT	LEVEL	RATE (%)	FORCE	MENT	LEVEL	RATE (%)
Workforce Region 06	46,891	44,457	2,434	5.2	43,366	40,021	3,345	7.7
Hamilton County	4,242	3,951	291	6.9	3,928	3,572	356	9.1
Jefferson County	5,550	5,298	252	4.5	5,027	4,637	390	7.8
Lafayette County	2,926	2,809	117	4.0	2,644	2,532	112	4.2
Madison County	7,887	7,447	440	5.6	7,148	6,632	516	7.2
Suwannee County	18,025	17,140	885	4.9	16,888	15,527	1,361	8.1
Taylor County	8,261	7,812	449	5.4	7,731	7,121	610	7.9
Florida	10,357,000	9,825,000	532,000	5.1	9,718,000	8,369,000	1,349,000	13.9
United States	160,379,000	151,160,000	9,220,000	5.7	155,830,000	133,326,000	22,504,000	14.4

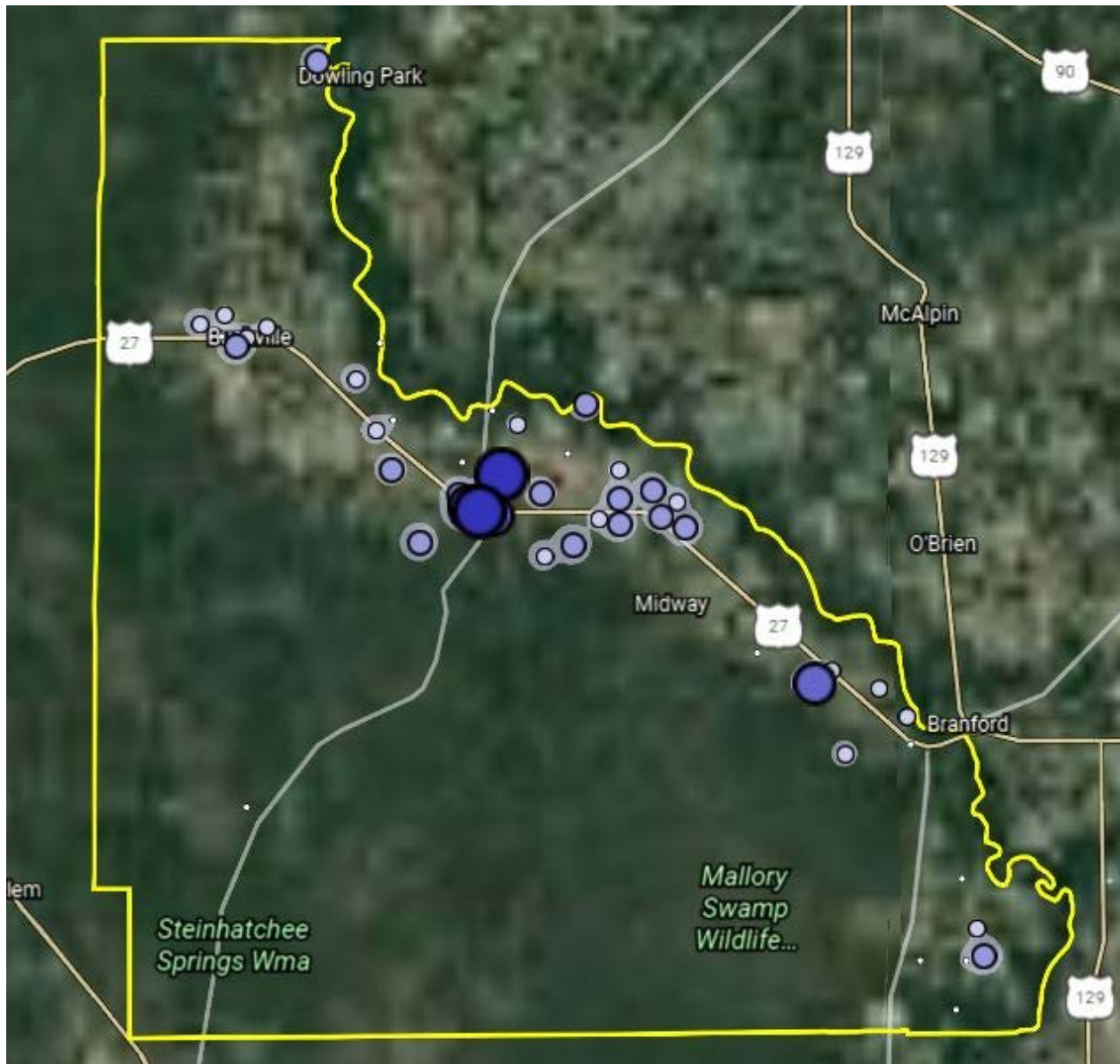
Source: U.S. Department of Labor, Bureau of Labor Statistics, Local Area Unemployment Statistics.

Population

	Population Estimate (as of July 1)							
	2012	2013	2014	2015	2016	2017	2018	2019
Workforce Region 06	122,995	122,584	121,960	121,621	121,259	121,510	121,538	121,575
Hamilton County	14,721	14,342	14,071	14,272	14,303	14,364	14,262	14,428
Jefferson County	14,219	14,209	14,056	14,115	13,960	14,165	14,321	14,246
Lafayette County	8,791	8,819	8,862	8,724	8,747	8,602	8,691	8,422
Madison County	18,972	18,753	18,601	18,478	18,316	18,474	18,540	18,493
Suwannee County	43,534	43,588	43,786	43,677	43,834	44,124	44,179	44,417
Taylor County	22,758	22,873	22,584	22,355	22,099	21,781	21,545	21,569
Florida	19,297,822	19,545,621	19,845,911	20,209,042	20,613,477	20,963,613	21,244,317	21,477,737
United States	313,830,990	315,993,715	318,301,008	320,635,163	322,941,311	324,985,539	326,687,501	328,239,523

Source: U.S. Census Bureau, Population Division.

Where Workers Work in Lafayette County



Source: U.S. Census Bureau, OnTheMap Application and Longitudinal Employer-Household Dynamics program.

Map Legend

Job Density [Jobs/Sq. Mile]

- 5 - 39
- 40 - 141
- 142 - 312
- 313 - 551
- 552 - 859

Job Count [Jobs/Census Block]

- 1 - 2
- 3 - 12
- 13 - 40
- 41 - 93
- 94 - 182

Work Area Profile Summary

	Count	Share
Total Primary Jobs	1,215	100.0%
Jobs by Worker Age		
Age 29 or younger	260	21.4%
Age 30 to 54	653	53.7%
Age 55 or older	302	24.9%
Jobs by Earnings		
\$1,250 per month or less	284	23.4%
\$1,251 to \$3,333 per month	555	45.7%
More than \$3,333 per month	376	30.9%
Jobs by NAICS Industry Sector		
Agriculture, Forestry, Fishing and Hunting	228	18.8%
Mining, Quarrying, and Oil and Gas Extraction	11	0.9%
Utilities	6	0.5%
Construction	39	3.2%
Manufacturing	55	4.5%
Wholesale Trade	38	3.1%
Retail Trade	140	11.5%
Transportation and Warehousing	98	8.1%
Information	6	0.5%
Finance and Insurance	13	1.1%
Real Estate and Rental and Leasing	0	0.0%
Professional, Scientific, and Technical Services	24	2.0%
Management of Companies and Enterprises	0	0.0%
Administration & Support, Waste Management and Remediation	11	0.9%
Educational Services	156	12.8%
Health Care and Social Assistance	135	11.1%
Arts, Entertainment, and Recreation	0	0.0%
Accommodation and Food Services	50	4.1%
Other Services (excluding Public Administration)	5	0.4%
Public Administration	200	16.5%

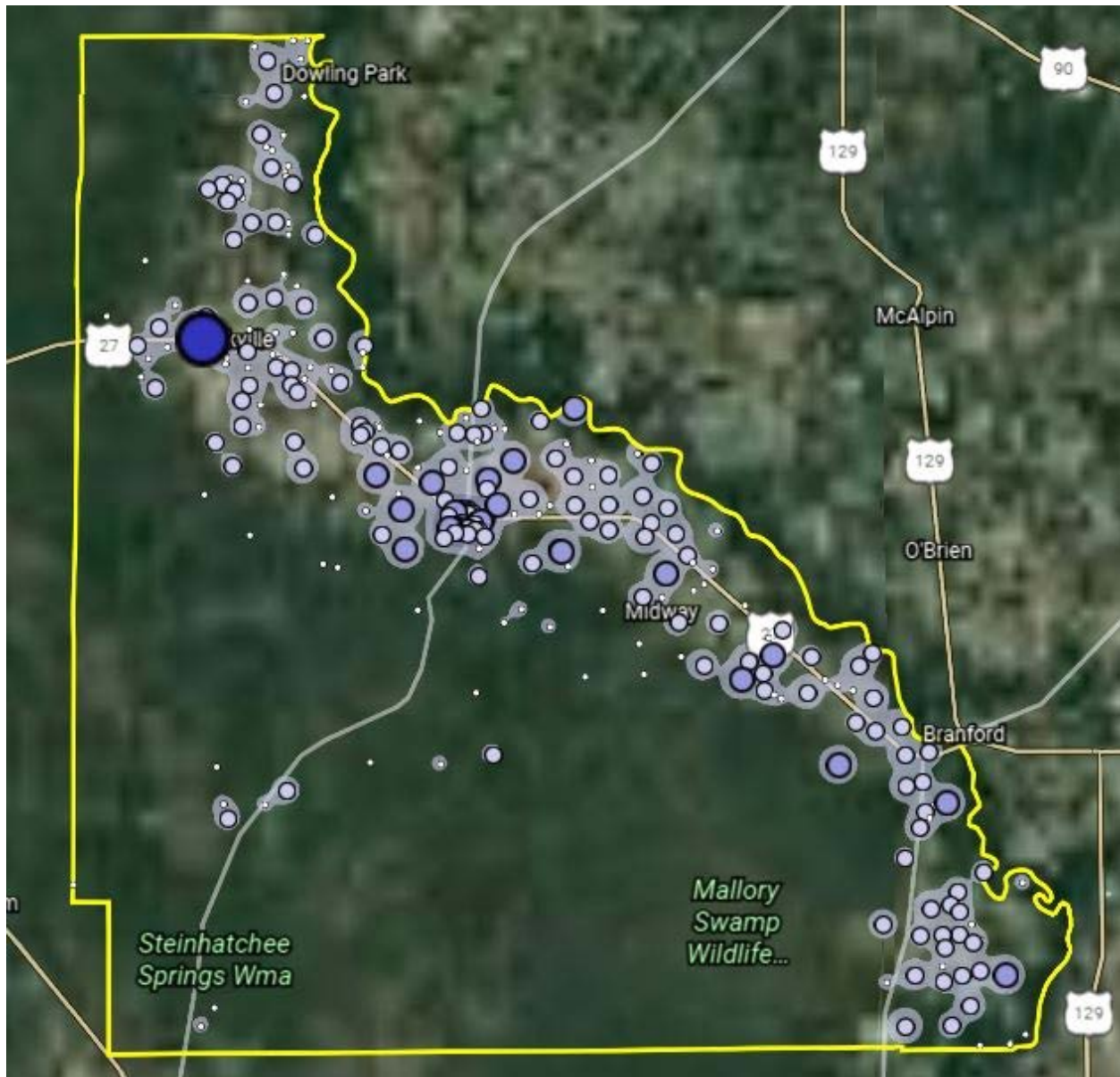
Source: U.S. Census Bureau, OnTheMap Application and Longitudinal Employer-Household Dynamics program.

Work Area Profile Summary - Demographics

	Count	Share
Jobs by Worker Race		
White Alone	1,102	90.7%
Black or African American Alone	90	7.4%
American Indian or Alaska Native Alone	5	0.4%
Asian Alone	11	0.9%
Native Hawaiian or Other Pacific Islander Alone	0	0.0%
Two or More Race Groups	7	0.6%
Jobs by Worker Ethnicity		
Not Hispanic or Latino	1,129	92.9%
Hispanic or Latino	86	7.1%
Jobs by Worker Educational Attainment		
Less than high school	164	13.5%
High school or equivalent, no college	321	26.4%
Some college or Associate degree	292	24.0%
Bachelor's degree or advanced degree	178	14.7%
Educational attainment not available (workers aged 29 or younger)	260	21.4%
Jobs by Worker Sex		
Male	625	51.4%
Female	590	48.6%

Source: U.S. Census Bureau, OnTheMap Application and Longitudinal Employer-Household Dynamics program.

Where Workers Live in Lafayette County



Source: U.S. Census Bureau, OnTheMap Application and Longitudinal Employer-Household Dynamics program.

Map Legend

Job Density [Jobs/Sq. Mile]

- 5 - 39
- 40 - 141
- 142 - 311
- 312 - 549
- 550 - 856

Job Count [Jobs/Census Block]

- 1 - 3
- 4 - 21
- 22 - 70
- 71 - 166
- 167 - 325

Home Area Profile Summary

	Count	Share
Total Primary Jobs	2,511	100.0%
Jobs by Worker Age		
Age 29 or younger	638	25.4%
Age 30 to 54	1,302	51.9%
Age 55 or older	571	22.7%
Jobs by Earnings		
\$1,250 per month or less	550	21.9%
\$1,251 to \$3,333 per month	1,104	44.0%
More than \$3,333 per month	857	34.1%
Jobs by NAICS Industry Sector		
Agriculture, Forestry, Fishing and Hunting	203	8.1%
Mining, Quarrying, and Oil and Gas Extraction	9	0.4%
Utilities	15	0.6%
Construction	147	5.9%
Manufacturing	201	8.0%
Wholesale Trade	82	3.3%
Retail Trade	330	13.1%
Transportation and Warehousing	111	4.4%
Information	22	0.9%
Finance and Insurance	60	2.4%
Real Estate and Rental and Leasing	25	1.0%
Professional, Scientific, and Technical Services	79	3.1%
Management of Companies and Enterprises	10	0.4%
Administration & Support, Waste Management and Remediation	84	3.3%
Educational Services	225	9.0%
Health Care and Social Assistance	345	13.7%
Arts, Entertainment, and Recreation	21	0.8%
Accommodation and Food Services	182	7.2%
Other Services (excluding Public Administration)	43	1.7%
Public Administration	317	12.6%

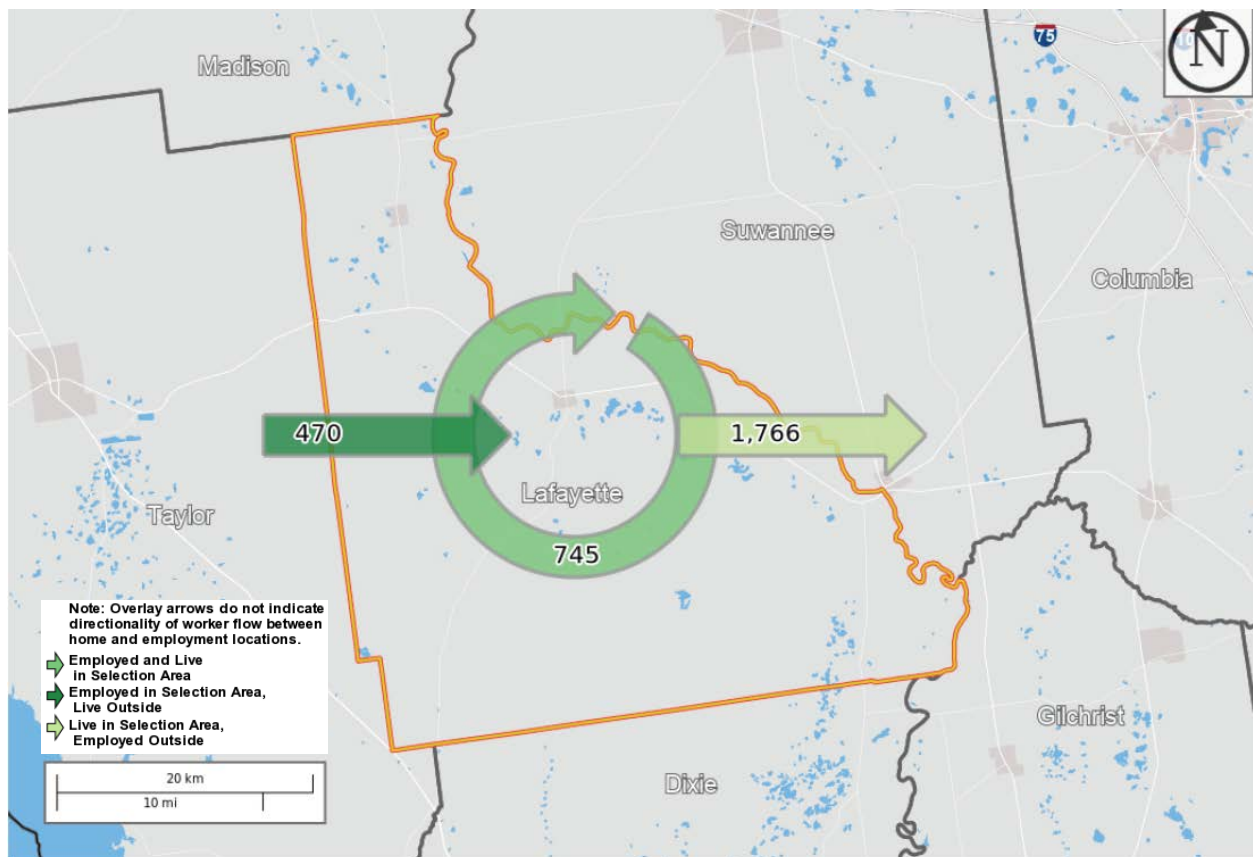
Source: U.S. Census Bureau, OnTheMap Application and Longitudinal Employer-Household Dynamics program.

Home Area Profile Summary - Demographics

	Count	Share
Jobs by Worker Race		
White Alone	2,186	87.1%
Black or African American Alone	256	10.2%
American Indian or Alaska Native Alone	11	0.4%
Asian Alone	24	1.0%
Native Hawaiian or Other Pacific Islander Alone	2	0.1%
Two or More Race Groups	32	1.3%
Jobs by Worker Ethnicity		
Not Hispanic or Latino	2,264	90.2%
Hispanic or Latino	247	9.8%
Jobs by Worker Educational Attainment		
Less than high school	278	11.1%
High school or equivalent, no college	607	24.2%
Some college or Associate degree	597	23.8%
Bachelor's degree or advanced degree	391	15.6%
Educational attainment not available (workers aged 29 or younger)	638	25.4%
Jobs by Worker Sex		
Male	1,312	52.3%
Female	1,199	47.7%

Source: U.S. Census Bureau, OnTheMap Application and Longitudinal Employer-Household Dynamics program.

Labor Inflow/Outflow Map



Source: U.S. Census Bureau, OnTheMap Application and Longitudinal Employer-Household Dynamics program.

Of the 1,215 people who are employed in Lafayette County, 745 (61.3%) live and work in the county. There are 470 (38.7%) workers who live outside Lafayette County and work within the county. Of the 2,511 workers who live within Lafayette County, 1,766 (70.3%) residents work outside the county. There is a net outflow of -1,296 workers from Lafayette County.

Labor Inflow/Outflow Summary

	Count	Share
Lafayette County Labor Market Size (Primary Jobs)		
Employed in the Selection Area	1,215	100.0%
Living in the Selection Area	2,511	206.7%
Net Job Inflow (+) or Outflow (-)	-1,296	-
Lafayette County Labor Force Efficiency (Primary Jobs)		
Living in the Selection Area	2,511	100.0%
Living and Employed in the Selection Area	745	29.7%
Living in the Selection Area but Employed Outside	1,766	70.3%
Lafayette County Employment Efficiency (Primary Jobs)		
Employed in the Selection Area	1,215	100.0%
Employed and Living in the Selection Area	745	61.3%
Employed in the Selection Area but Living Outside	470	38.7%
Outflow Job Characteristics		
External Jobs Filled by Residents	1,766	100.0%
Workers Aged 29 or younger	478	27.1%
Workers Aged 30 to 54	888	50.3%
Workers Aged 55 or older	400	22.7%
Workers Earning \$1,250 per month or less	380	21.5%
Workers Earning \$1,251 to \$3,333 per month	756	42.8%
Workers Earning More than \$3,333 per month	630	35.7%
Workers in the "Goods Producing" Industry Class	361	20.4%
Workers in the "Trade, Transportation, and Utilities" Industry Class	419	23.7%
Workers in the "All Other Services" Industry Class	986	55.8%

Source: U.S. Census Bureau, OnTheMap Application and Longitudinal Employer-Household Dynamics program.

Labor Inflow/Outflow Summary (continued)

	Count	Share
Inflow Job Characteristics (Primary Jobs)		
Internal Jobs Filled by Outside Workers	470	100.0%
Workers Aged 29 or younger	100	21.3%
Workers Aged 30 to 54	239	50.9%
Workers Aged 55 or older	131	27.9%
Workers Earning \$1,250 per month or less	114	24.3%
Workers Earning \$1,251 to \$3,333 per month	207	44.0%
Workers Earning More than \$3,333 per month	149	31.7%
Workers in the "Goods Producing" Industry Class	134	28.5%
Workers in the "Trade, Transportation, and Utilities" Industry Class	163	34.7%
Workers in the "All Other Services" Industry Class	173	36.8%
Interior Flow Job Characteristics (Primary Jobs)		
Internal Jobs Filled by Residents	745	100.0%
Workers Aged 29 or younger	160	21.5%
Workers Aged 30 to 54	414	55.6%
Workers Aged 55 or older	171	23.0%
Workers Earning \$1,250 per month or less	170	22.8%
Workers Earning \$1,251 to \$3,333 per month	348	46.7%
Workers Earning More than \$3,333 per month	227	30.5%
Workers in the "Goods Producing" Industry Class	199	26.7%
Workers in the "Trade, Transportation, and Utilities" Industry Class	119	16.0%
Workers in the "All Other Services" Industry Class	427	57.3%

Source: U.S. Census Bureau, OnTheMap Application and Longitudinal Employer-Household Dynamics program.

Work Destination Summary

Where Workers are Employed Who Live in Lafayette County

	Count	Share
Total Primary Jobs	2,511	100.0%
Job Counts by Counties Where Workers are Employed - Primary Jobs		
Lafayette County, FL	745	29.7%
Suwannee County, FL	351	14.0%
Alachua County, FL	174	6.9%
Columbia County, FL	157	6.3%
Duval County, FL	127	5.1%
Taylor County, FL	123	4.9%
Hillsborough County, FL	72	2.9%
Orange County, FL	72	2.9%
Marion County, FL	43	1.7%
Leon County, FL	42	1.7%
Dixie County, FL	32	1.3%
Pinellas County, FL	31	1.2%
Levy County, FL	30	1.2%
Madison County, FL	27	1.1%
Volusia County, FL	26	1.0%
Polk County, FL	25	1.0%
Seminole County, FL	24	1.0%
Citrus County, FL	23	0.9%
Gilchrist County, FL	23	0.9%
Pasco County, FL	21	0.8%
Lake County, FL	20	0.8%
Miami-Dade County, FL	20	0.8%
Clay County, FL	19	0.8%
Palm Beach County, FL	19	0.8%
Hernando County, FL	18	0.7%
All Other Locations	247	9.8%

Source: U.S. Census Bureau, OnTheMap Application and Longitudinal Employer-Household Dynamics program.

Home Destination Summary

Where Workers Live Who are Employed in Lafayette County

	Count	Share
Total Primary Jobs	1,215	100.0%
Job Counts by Counties Where Workers Live - Primary Jobs		
Lafayette County, FL	745	61.3%
Suwannee County, FL	148	12.2%
Columbia County, FL	47	3.9%
Taylor County, FL	42	3.5%
Levy County, FL	17	1.4%
Dixie County, FL	15	1.2%
Gilchrist County, FL	15	1.2%
Polk County, FL	15	1.2%
Marion County, FL	12	1.0%
Madison County, FL	11	0.9%
Duval County, FL	10	0.8%
Alachua County, FL	9	0.7%
Orange County, FL	9	0.7%
Hillsborough County, FL	7	0.6%
Bradford County, FL	6	0.5%
Leon County, FL	6	0.5%
Union County, FL	5	0.4%
Brevard County, FL	4	0.3%
Franklin County, FL	4	0.3%
Gadsden County, FL	4	0.3%
Hamilton County, FL	4	0.3%
Jefferson County, FL	4	0.3%
St. Johns County, FL	4	0.3%
Sarasota County, FL	4	0.3%
Wakulla County, FL	4	0.3%
All Other Locations	64	5.3%

Source: U.S. Census Bureau, OnTheMap Application and Longitudinal Employer-Household Dynamics program.

**Florida Department of Economic Opportunity
Bureau of Workforce Statistics and Economic Research
(WSER)**

**Caldwell Building
MSC G-020
107 E. Madison Street
Tallahassee, Florida 32399-4111
Phone (850) 245-7257**



www.floridajobs.org/labor-market-information