

Summary of Employment, Demographics, and Commuting Patterns for Holmes County, Florida



May 2021

Contents

Labor Shed Analysis	3
OnTheMap, Census Bureau	3
Florida Department of Economic Opportunity, Bureau of Workforce Statistics and Economic Research (WSER)	3
Executive Summary	4
People QuickFacts.....	5
Business and Geography QuickFacts.....	7
Labor Force, Employment, and Unemployment	7
Population	7
Where Workers Work in Holmes County	8
Work Area Profile Summary	9
Work Area Profile Summary - Demographics	10
Where Workers Live in Holmes County	11
Home Area Profile Summary	12
Home Area Profile Summary - Demographics.....	13
Labor Inflow/Outflow Map	14
Labor Inflow/Outflow Summary	15
Work Destination Summary	17
Home Destination Summary	18

Labor Shed Analysis

A labor shed analysis is defined as where workers work and where workers live relative to a user-defined selection area. This analysis helps to determine where a labor market draws its commuting workers. Labor shed studies can draw comparisons between various geographies including state, Congressional District, Metropolitan Statistical Area (MSA), county, Workforce Investment Area (WIA), Zip Code, and Census tract. By indicating how many of the selection area workers work outside the area, labor sheds can help identify potential pools of workers who would be available for work in the user-defined area.

Labor shed studies provide economic developers and existing or prospective employers a tool to understand the local labor market and make informed expansion and site selection decisions. In addition, labor shed studies can help indicate potential impacts from environmental, social, or economic incidents.

OnTheMap, Census Bureau

OnTheMap is a mapping and reporting tool developed by the U.S. Census Bureau showing employment and home locations of workers with companion reports for user-defined areas. It is the first synthetic data product released by the Census Bureau. OnTheMap is an important tool for Florida to perform labor inflow/outflow analyses and provide commuting data to planning and economic development agencies as well as Regional Workforce Boards. OnTheMap data is also used by the Department of Economic Opportunity to help quantify natural disaster impacts for emergency management agencies based on where workers live and where they work.

OnTheMap integrates existing data from state-supplied administrative records on workers and employers with existing federal censuses, surveys, and other administrative records. The state Labor Market Information (LMI) agencies supply key data from unemployment wage records and from businesses each quarter. The Census Bureau merges the state-supplied data with current demographic information to produce the data found in OnTheMap. By combining data from different administrative sources, censuses, and surveys, the Census Bureau produces local employment information that was not previously available.

Florida Department of Economic Opportunity, Bureau of Workforce Statistics and Economic Research (WSER)

The Florida Department of Economic Opportunity, Bureau of Workforce Statistics and Economic Research (WSER), produces, analyzes, and distributes labor statistics to improve economic decision making. These data are produced as part of the federal/state cooperative statistical program with the U.S. Department of Labor, Bureau of Labor Statistics, and the Employment and Training Administration.

Executive Summary

The analysis of workforce and demographic characteristics, including commuting patterns of Holmes County was conducted to provide economic data on the population and labor force living or working in the county. The report is useful for detailing where workers work and live in order to align resources. This report includes population, labor force, and demographics for Holmes County.

Workers employed in Holmes County are clustered in the Health Care and Social Assistance (19.2%) and Public Administration (18.7%) industries. Workers living in Holmes County are concentrated in the Retail Trade (14.7%) and Health Care and Social Assistance (13.7%) industries.

A detailed examination of commuting patterns for Holmes County shows that the county has a net outflow of -3,017 workers. Using the latest annual Census data available, there were 3,318 workers employed in Holmes County and 6,335 workers living in Holmes County. Of the workers who lived in the county, 4,769 workers (75.3%) were employed outside the county.

With 75.3% of workers who reside in Holmes County employed outside the county, Holmes County was ranked 9th of 67 for the highest outflow rankings among Florida counties. Leon (20.9%) had the lowest outflow rate, followed by Miami-Dade (22.0%) and Duval (25.5%). Glades (85.1%), Jefferson (82.2%), and Union (79.6%) had the highest worker outflow rates.

Of the 4,769 Holmes County workers employed outside the county, the top destination counties are Washington County (617 workers), Walton County (609 workers), and Bay County (539 workers). Of the 1,752 Holmes County workers living outside the county, the top origin counties are Washington County (455 workers), Jackson County (259 workers), and Bay County (158 workers).

People QuickFacts

	Holmes County	Florida	United States
Population			
Population estimates, July 1, 2019, (V2019)	19,617	21,477,737	328,239,523
Population estimates base, April 1, 2010, (V2019)	19,923	18,804,564	308,758,105
Population, percent change - April 1, 2010 (estimates base) to July 1, 2019, (V2019)	-1.5%	14.2%	6.3%
Population, Census, April 1, 2010	19,927	18,801,310	308,745,538
Population, Census, April 1, 2020	X	21,538,187	331,449,281
Age and Sex			
Persons under 5 years, percent	5.6%	5.3%	6.0%
Persons under 18 years, percent	20.4%	19.7%	22.3%
Persons 65 years and over, percent	20.0%	20.9%	16.5%
Female persons, percent	46.9%	51.1%	50.8%
Race and Hispanic Origin			
White alone, percent	88.9%	77.3%	76.3%
Black or African American alone, percent(a)	6.7%	16.9%	13.4%
American Indian and Alaska Native alone, percent(a)	1.1%	0.5%	1.3%
Asian alone, percent(a)	0.7%	3.0%	5.9%
Native Hawaiian and Other Pacific Islander alone, percent(a)	0.2%	0.1%	0.2%
Two or More Races, percent	2.4%	2.2%	2.8%
Hispanic or Latino, percent(b)	2.9%	26.4%	18.5%
White alone, not Hispanic or Latino, percent	86.4%	53.2%	60.1%
Population Characteristics			
Veterans, 2015-2019	1,663	1,440,338	18,230,322
Foreign born persons, percent, 2015-2019	1.9%	20.7%	13.6%
Housing			
Housing units, July 1, 2019, (V2019)	8,725	9,673,682	139,684,244
Owner-occupied housing unit rate, 2015-2019	76.4%	65.4%	64.0%
Median value of owner-occupied housing units, 2015-2019	\$92,700	\$215,300	\$217,500
Median selected monthly owner costs -with a mortgage, 2015-2019	\$1,013	\$1,503	\$1,595
Median selected monthly owner costs -without a mortgage, 2015-2019	\$287	\$505	\$500
Median gross rent, 2015-2019	\$703	\$1,175	\$1,062
Building permits, 2020	11	164,074	1,471,141

Legend

The vintage year (e.g., V2019) refers to the final year of the series (2010 thru 2019). Different vintage years of estimates are not comparable.

Fact Notes

(a) Includes persons reporting only one race

(b) Hispanics may be of any race, so also are included in applicable race categories

Source: U.S. Census Bureau, State & County QuickFacts.

People QuickFacts (continued)

	Holmes County	Florida	United States
Families & Living Arrangements			
Households, 2015-2019	7,092	7,736,311	120,756,048
Persons per household, 2015-2019	2.48	2.65	2.62
Living in same house 1 year ago, percent of persons age 1 year+, 2015-2019	81.4%	84.5%	85.8%
Language other than English spoken at home, percent of persons age 5 years+, 2015-2019	4.1%	29.4%	21.6%
Computer and Internet Use			
Households with a computer, percent, 2015-2019	83.9%	91.5%	90.3%
Households with a broadband Internet subscription, percent, 2015-2019	72.4%	83.0%	82.7%
Education			
High school graduate or higher, percent of persons age 25 years+, 2015-2019	78.7%	88.2%	88.0%
Bachelor's degree or higher, percent of persons age 25 years+, 2015-2019	10.7%	29.9%	32.1%
Health			
With a disability, under age 65 years, percent, 2015-2019	16.8%	8.6%	8.6%
Persons without health insurance, under age 65 years, percent	17.4%	16.3%	9.5%
Economy			
In civilian labor force, total, percent of population age 16 years+, 2015-2019	46.7%	58.5%	63.0%
In civilian labor force, female, percent of population age 16 years+, 2015-2019	47.8%	54.3%	58.3%
Total accommodation and food services sales, 2012 (\$1,000)(c)	9,377	49,817,925	708,138,598
Total health care and social assistance receipts/revenue, 2012 (\$1,000)(c)	36,047	124,061,425	2,040,441,203
Total manufacturers shipments, 2012 (\$1,000)(c)	14,598	96,924,106	5,696,729,632
Total merchant wholesaler sales, 2012 (\$1,000)(c)	D	252,626,608	5,208,023,478
Total retail sales, 2012 (\$1,000)(c)	104,098	273,867,145	4,219,821,871
Total retail sales per capita, 2012(c)	\$5,256	\$14,177	\$13,443
Transportation			
Mean travel time to work (minutes), workers age 16 years+, 2015-2019	27.0	27.8	26.9
Income & Poverty			
Median household income (in 2019 dollars), 2015-2019	\$39,102	\$55,660	\$62,843
Per capita income in past 12 months (in 2019 dollars), 2015-2019	\$19,201	\$31,619	\$34,103
Persons in poverty, percent	20.1%	12.7%	10.5%

Legend

The vintage year (e.g., V2019) refers to the final year of the series (2010 thru 2019). Different vintage years of estimates are not comparable.

Fact Notes

(c) Economic Census - Puerto Rico data are not comparable to U.S. Economic Census data

Value Flags

"D" Suppressed to avoid disclosure of confidential information

Source: U.S. Census Bureau, State & County QuickFacts.

Business and Geography QuickFacts

	Holmes County	Florida	United States
Businesses			
Total employer establishments, 2019	266	574,51	7,959,103
Total employment, 2019	1,788	8,860,04	132,989,428
Total annual payroll, 2019 (\$1,000)	53,474	426,908,31	7,428,553,593
Total employment, percent change, 2018-2019	3.4%	2.2%	1.6%
Total nonemployer establishments, 2018	1,214	2,388,050	26,485,532
All firms, 2012	1,055	2,100,187	27,626,360
Men-owned firms, 2012	631	1,084,885	14,844,597
Women-owned firms, 2012	260	807,817	9,878,397
Minority-owned firms, 2012	75	926,112	7,952,386
Nonminority-owned firms, 2012	955	1,121,749	18,987,918
Veteran-owned firms, 2012	164	185,756	2,521,682
Nonveteran-owned firms, 2012	807	1,846,686	24,070,685
Geography			
Population per square mile, 2010	41.6	350.6	87.4
Land area in square miles, 2010	478.78	53,624.76	3,531,905.43
FIPS Code	12059	12	1

Source: U.S. Census Bureau, State & County QuickFacts.

Labor Force, Employment, and Unemployment

	April 2021				April 2020			
	LABOR	EMPLOY-	UNEMPLOYMENT		LABOR	EMPLOY-	UNEMPLOYMENT	
	FORCE	MENT	LEVEL	RATE (%)	FORCE	MENT	LEVEL	RATE (%)
Workforce Region 03	42,919	40,793	2,126	5.0	39,378	36,236	3,142	8.0
Calhoun County	5,036	4,789	247	4.9	4,597	4,265	332	7.2
Holmes County	7,100	6,768	332	4.7	6,576	6,035	541	8.2
Jackson County	18,290	17,361	929	5.1	16,655	15,421	1,234	7.4
Liberty County	2,710	2,580	130	4.8	2,514	2,357	157	6.2
Washington County	9,783	9,295	488	5.0	9,036	8,158	878	9.7
Florida	10,357,000	9,825,000	532,000	5.1	9,718,000	8,369,000	1,349,000	13.9
United States	160,379,000	151,160,000	9,220,000	5.7	155,830,000	133,326,000	22,504,000	14.4

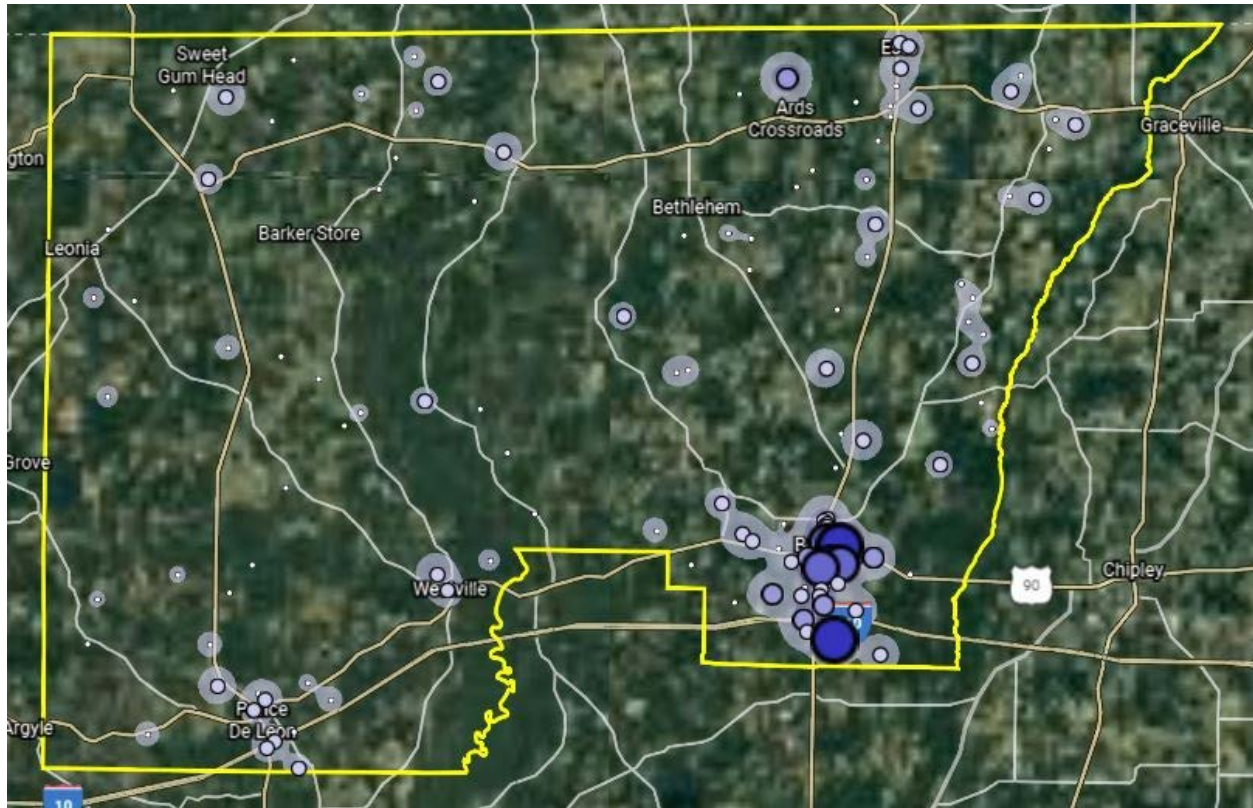
Source: U.S. Department of Labor, Bureau of Labor Statistics, Local Area Unemployment Statistics.

Population

	Population Estimate (as of July 1)							
	2012	2013	2014	2015	2016	2017	2018	2019
Workforce Region 03	116,513	115,913	115,461	115,249	114,781	114,926	115,318	113,963
Calhoun County	14,665	14,578	14,450	14,406	14,330	14,428	14,543	14,105
Holmes County	19,697	19,594	19,564	19,273	19,398	19,427	19,443	19,617
Jackson County	49,109	48,880	48,730	48,609	48,299	48,289	48,112	46,414
Liberty County	8,301	8,357	8,418	8,409	8,300	8,236	8,427	8,354
Washington County	24,741	24,504	24,299	24,552	24,454	24,546	24,793	25,473
Florida	19,297,822	19,545,621	19,845,911	20,209,042	20,613,477	20,963,613	21,244,317	21,477,737
United States	313,830,990	315,993,715	318,301,008	320,635,163	322,941,311	324,985,539	326,687,501	328,239,523

Source: U.S. Census Bureau, Population Division.

Where Workers Work in Holmes County



Source: U.S. Census Bureau, OnTheMap Application and Longitudinal Employer-Household Dynamics program.

Map Legend

Job Density [Jobs/Sq. Mile]

- 5 - 87
- 88 - 333
- 334 - 744
- 745 - 1,318
- 1,319 - 2,058

Job Count [Jobs/Census Block]

- 1 - 5
- 6 - 38
- 39 - 126
- 127 - 299
- 300 - 584

Work Area Profile Summary

	Count	Share
Total Primary Jobs	3,318	100.0%
Jobs by Worker Age		
Age 29 or younger	670	20.2%
Age 30 to 54	1,830	55.2%
Age 55 or older	818	24.7%
Jobs by Earnings		
\$1,250 per month or less	751	22.6%
\$1,251 to \$3,333 per month	1,650	49.7%
More than \$3,333 per month	917	27.6%
Jobs by NAICS Industry Sector		
Agriculture, Forestry, Fishing and Hunting	55	1.7%
Mining, Quarrying, and Oil and Gas Extraction	0	0.0%
Utilities	23	0.7%
Construction	317	9.6%
Manufacturing	96	2.9%
Wholesale Trade	44	1.3%
Retail Trade	385	11.6%
Transportation and Warehousing	25	0.8%
Information	29	0.9%
Finance and Insurance	48	1.4%
Real Estate and Rental and Leasing	24	0.7%
Professional, Scientific, and Technical Services	59	1.8%
Management of Companies and Enterprises	0	0.0%
Administration & Support, Waste Management and Remediation	43	1.3%
Educational Services	587	17.7%
Health Care and Social Assistance	637	19.2%
Arts, Entertainment, and Recreation	14	0.4%
Accommodation and Food Services	235	7.1%
Other Services (excluding Public Administration)	78	2.4%
Public Administration	619	18.7%

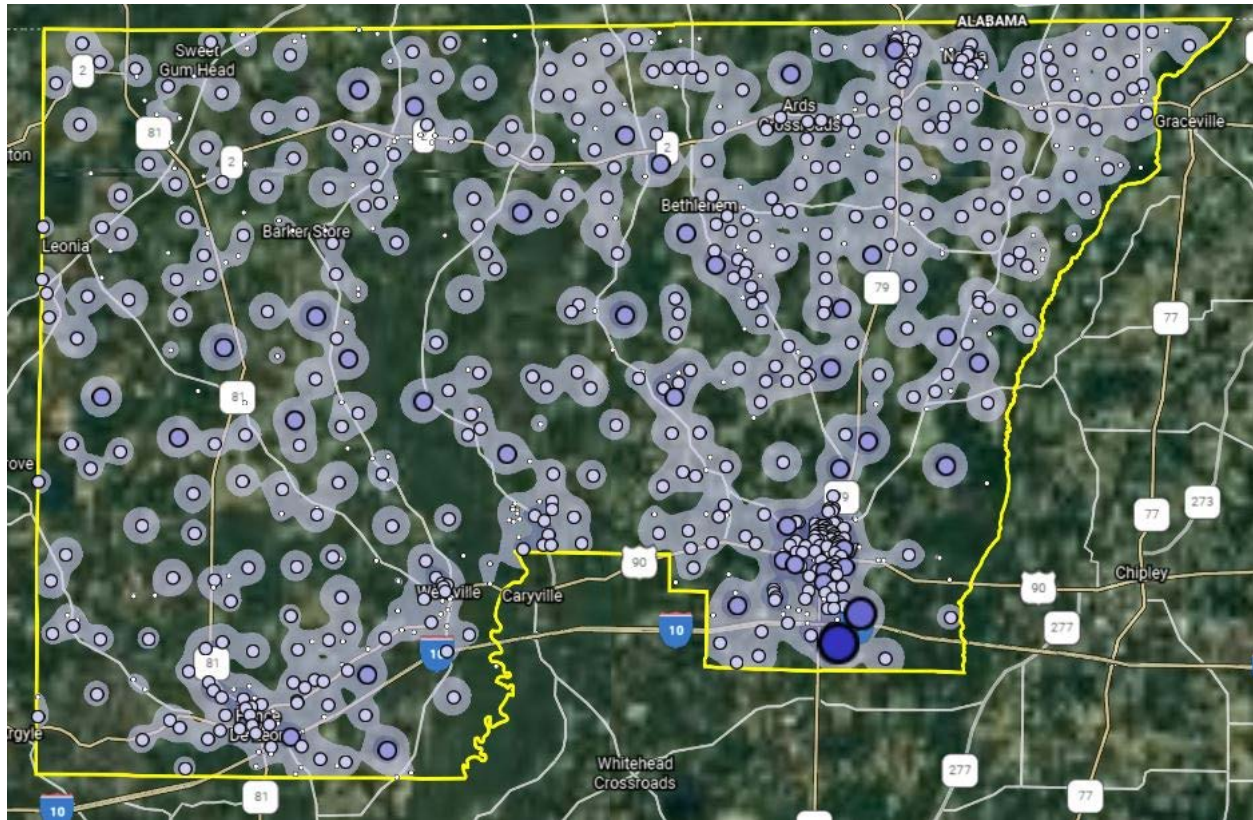
Source: U.S. Census Bureau, OnTheMap Application and Longitudinal Employer-Household Dynamics program.

Work Area Profile Summary - Demographics

	Count	Share
Jobs by Worker Race		
White Alone	2,920	88.0%
Black or African American Alone	278	8.4%
American Indian or Alaska Native Alone	22	0.7%
Asian Alone	51	1.5%
Native Hawaiian or Other Pacific Islander Alone	4	0.1%
Two or More Race Groups	43	1.3%
Jobs by Worker Ethnicity		
Not Hispanic or Latino	3,197	96.4%
Hispanic or Latino	121	3.6%
Jobs by Worker Educational Attainment		
Less than high school	320	9.6%
High school or equivalent, no college	851	25.6%
Some college or Associate degree	900	27.1%
Bachelor's degree or advanced degree	577	17.4%
Educational attainment not available (workers aged 29 or younger)	670	20.2%
Jobs by Worker Sex		
Male	1,460	44.0%
Female	1,858	56.0%

Source: U.S. Census Bureau, OnTheMap Application and Longitudinal Employer-Household Dynamics program.

Where Workers Live in Holmes County



Source: U.S. Census Bureau, OnTheMap Application and Longitudinal Employer-Household Dynamics program.

Map Legend

Job Density [Jobs/Sq. Mile]

- 5 - 39
- 40 - 144
- 145 - 318
- 319 - 561
- 562 - 875

Job Count [Jobs/Census Block]

- 1 - 3
- 4 - 23
- 24 - 75
- 76 - 177
- 178 - 345

Home Area Profile Summary

	Count	Share
Total Primary Jobs	6,335	100.0%
Jobs by Worker Age		
Age 29 or younger	1,416	22.4%
Age 30 to 54	3,369	53.2%
Age 55 or older	1,550	24.5%
Jobs by Earnings		
\$1,250 per month or less	1,361	21.5%
\$1,251 to \$3,333 per month	2,825	44.6%
More than \$3,333 per month	2,149	33.9%
Jobs by NAICS Industry Sector		
Agriculture, Forestry, Fishing and Hunting	90	1.4%
Mining, Quarrying, and Oil and Gas Extraction	19	0.3%
Utilities	74	1.2%
Construction	555	8.8%
Manufacturing	411	6.5%
Wholesale Trade	192	3.0%
Retail Trade	930	14.7%
Transportation and Warehousing	173	2.7%
Information	55	0.9%
Finance and Insurance	141	2.2%
Real Estate and Rental and Leasing	74	1.2%
Professional, Scientific, and Technical Services	270	4.3%
Management of Companies and Enterprises	33	0.5%
Administration & Support, Waste Management and Remediation	281	4.4%
Educational Services	656	10.4%
Health Care and Social Assistance	871	13.7%
Arts, Entertainment, and Recreation	53	0.8%
Accommodation and Food Services	604	9.5%
Other Services (excluding Public Administration)	156	2.5%
Public Administration	697	11.0%

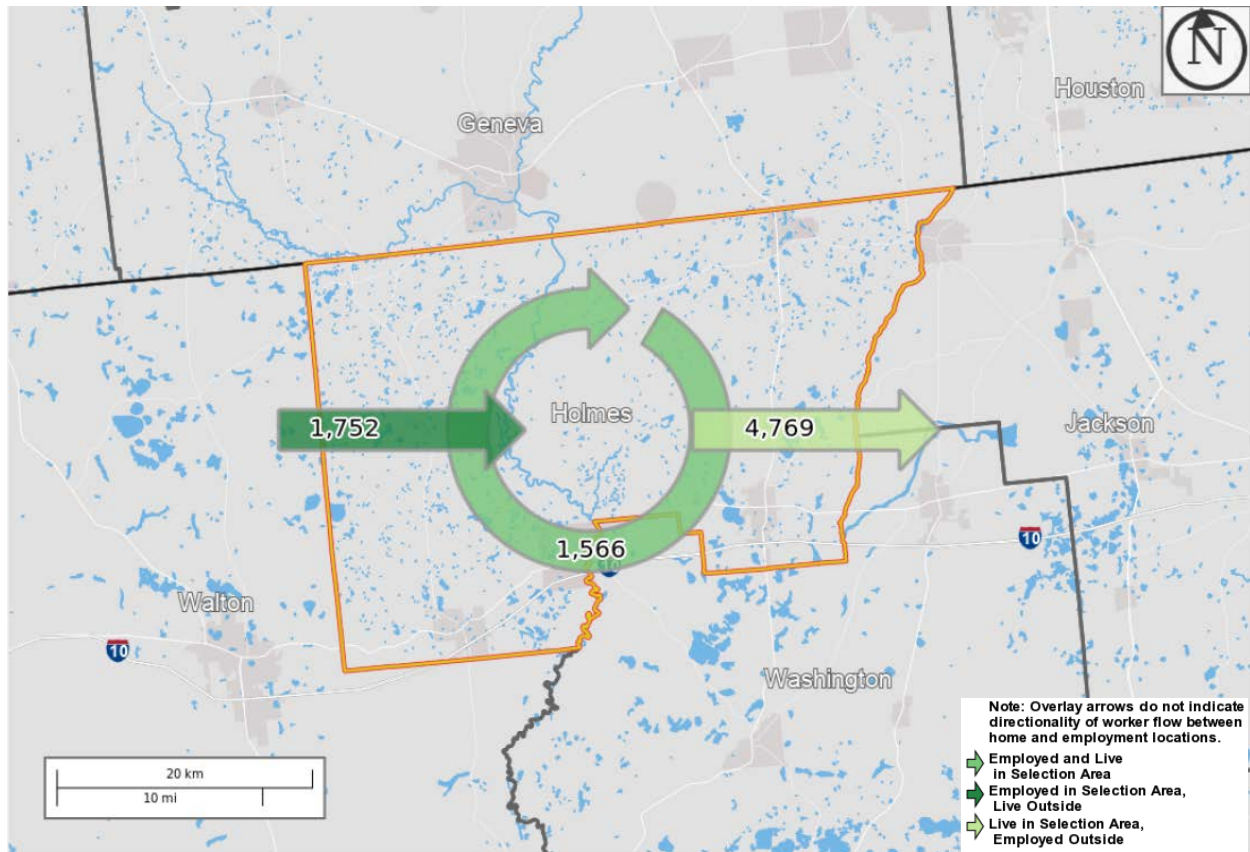
Source: U.S. Census Bureau, OnTheMap Application and Longitudinal Employer-Household Dynamics program.

Home Area Profile Summary - Demographics

	Count	Share
Jobs by Worker Race		
White Alone	5,797	91.5%
Black or African American Alone	314	5.0%
American Indian or Alaska Native Alone	60	0.9%
Asian Alone	59	0.9%
Native Hawaiian or Other Pacific Islander Alone	11	0.2%
Two or More Race Groups	94	1.5%
Jobs by Worker Ethnicity		
Not Hispanic or Latino	6,121	96.6%
Hispanic or Latino	214	3.4%
Jobs by Worker Educational Attainment		
Less than high school	579	9.1%
High school or equivalent, no college	1,558	24.6%
Some college or Associate degree	1,656	26.1%
Bachelor's degree or advanced degree	1,126	17.8%
Educational attainment not available (workers aged 29 or younger)	1,416	22.4%
Jobs by Worker Sex		
Male	3,173	50.1%
Female	3,162	49.9%

Source: U.S. Census Bureau, OnTheMap Application and Longitudinal Employer-Household Dynamics program.

Labor Inflow/Outflow Map



Source: U.S. Census Bureau, OnTheMap Application and Longitudinal Employer-Household Dynamics program.

Of the 3,318 people who are employed in Holmes County, 1,566 (47.2%) live and work in the county. There are 1,752 (52.8%) workers who live outside Holmes County and work within the county. Of the 6,335 workers who live within Holmes County, 4,769 (75.3%) residents work outside the county. There is a net outflow of -3,017 workers from Holmes County.

Labor Inflow/Outflow Summary

	Count	Share
Holmes County Labor Market Size (Primary Jobs)		
Employed in the Selection Area	3,318	100.0%
Living in the Selection Area	6,335	190.9%
Net Job Inflow (+) or Outflow (-)	-3,017	-
Holmes County Labor Force Efficiency (Primary Jobs)		
Living in the Selection Area	6,335	100.0%
Living and Employed in the Selection Area	1,566	24.7%
Living in the Selection Area but Employed Outside	4,769	75.3%
Holmes County Employment Efficiency (Primary Jobs)		
Employed in the Selection Area	3,318	100.0%
Employed and Living in the Selection Area	1,566	47.2%
Employed in the Selection Area but Living Outside	1,752	52.8%
Outflow Job Characteristics		
External Jobs Filled by Residents	4,769	100.0%
Workers Aged 29 or younger	1,159	24.3%
Workers Aged 30 to 54	2,477	51.9%
Workers Aged 55 or older	1,133	23.8%
Workers Earning \$1,250 per month or less	1,032	21.6%
Workers Earning \$1,251 to \$3,333 per month	2,065	43.3%
Workers Earning More than \$3,333 per month	1,672	35.1%
Workers in the "Goods Producing" Industry Class	855	17.9%
Workers in the "Trade, Transportation, and Utilities" Industry Class	1,138	23.9%
Workers in the "All Other Services" Industry Class	2,776	58.2%

Source: U.S. Census Bureau, OnTheMap Application and Longitudinal Employer-Household Dynamics program.

Labor Inflow/Outflow Summary (continued)

	Count	Share
Inflow Job Characteristics (Primary Jobs)		
Internal Jobs Filled by Outside Workers	1,752	100.0%
Workers Aged 29 or younger	413	23.6%
Workers Aged 30 to 54	938	53.5%
Workers Aged 55 or older	401	22.9%
Workers Earning \$1,250 per month or less	422	24.1%
Workers Earning \$1,251 to \$3,333 per month	890	50.8%
Workers Earning More than \$3,333 per month	440	25.1%
Workers in the "Goods Producing" Industry Class	248	14.2%
Workers in the "Trade, Transportation, and Utilities" Industry Class	246	14.0%
Workers in the "All Other Services" Industry Class	1,258	71.8%
Interior Flow Job Characteristics (Primary Jobs)		
Internal Jobs Filled by Residents	1,566	100.0%
Workers Aged 29 or younger	257	16.4%
Workers Aged 30 to 54	892	57.0%
Workers Aged 55 or older	417	26.6%
Workers Earning \$1,250 per month or less	329	21.0%
Workers Earning \$1,251 to \$3,333 per month	760	48.5%
Workers Earning More than \$3,333 per month	477	30.5%
Workers in the "Goods Producing" Industry Class	220	14.0%
Workers in the "Trade, Transportation, and Utilities" Industry Class	231	14.8%
Workers in the "All Other Services" Industry Class	1,115	71.2%

Source: U.S. Census Bureau, OnTheMap Application and Longitudinal Employer-Household Dynamics program.

Work Destination Summary

Where Workers are Employed Who Live in Holmes County

	Count	Share
Total Primary Jobs	6,335	100.0%
Job Counts by Counties Where Workers are Employed - Primary Jobs		
Holmes County, FL	1,566	24.7%
Washington County, FL	617	9.7%
Walton County, FL	609	9.6%
Bay County, FL	539	8.5%
Jackson County, FL	375	5.9%
Okaloosa County, FL	330	5.2%
Escambia County, FL	272	4.3%
Leon County, FL	233	3.7%
Santa Rosa County, FL	109	1.7%
Hillsborough County, FL	70	1.1%
Duval County, FL	68	1.1%
Orange County, FL	59	0.9%
Gadsden County, FL	53	0.8%
Gulf County, FL	45	0.7%
Miami-Dade County, FL	40	0.6%
Pinellas County, FL	38	0.6%
Calhoun County, FL	33	0.5%
Liberty County, FL	25	0.4%
Broward County, FL	23	0.4%
Brevard County, FL	22	0.3%
Palm Beach County, FL	22	0.3%
Alachua County, FL	21	0.3%
Seminole County, FL	17	0.3%
Wakulla County, FL	17	0.3%
Lee County, FL	13	0.2%
All Other Locations	1,119	17.7%

Source: U.S. Census Bureau, OnTheMap Application and Longitudinal Employer-Household Dynamics program.

Home Destination Summary

Where Workers Live Who are Employed in Holmes County

	Count	Share
Total Primary Jobs	3,318	100.0%
Job Counts by Counties Where Workers Live - Primary Jobs		
Holmes County, FL	1,566	47.2%
Washington County, FL	455	13.7%
Jackson County, FL	259	7.8%
Bay County, FL	158	4.8%
Walton County, FL	139	4.2%
Escambia County, FL	78	2.4%
Geneva County, AL	67	2.0%
Houston County, AL	60	1.8%
Okaloosa County, FL	45	1.4%
Santa Rosa County, FL	45	1.4%
Leon County, FL	41	1.2%
Calhoun County, FL	33	1.0%
Coffee County, AL	24	0.7%
Wakulla County, FL	21	0.6%
Covington County, AL	17	0.5%
Dale County, AL	16	0.5%
Gulf County, FL	15	0.5%
Gadsden County, FL	13	0.4%
Madison County, FL	12	0.4%
Franklin County, FL	11	0.3%
Miami-Dade County, FL	11	0.3%
Butler County, AL	9	0.3%
Duval County, FL	9	0.3%
Liberty County, FL	9	0.3%
Pinellas County, FL	9	0.3%
All Other Locations	196	5.9%

Source: U.S. Census Bureau, OnTheMap Application and Longitudinal Employer-Household Dynamics program.

**Florida Department of Economic Opportunity
Bureau of Workforce Statistics and Economic Research
(WSER)**

**Caldwell Building
MSC G-020
107 E. Madison Street
Tallahassee, Florida 32399-4111
Phone (850) 245-7257**



www.floridajobs.org/labor-market-information