

Summary of Employment, Demographics, and Commuting Patterns for Highlands County, Florida



May 2021

Contents

Labor Shed Analysis	3
OnTheMap, Census Bureau	3
Florida Department of Economic Opportunity, Bureau of Workforce Statistics and Economic Research (WSER)	3
Executive Summary	4
People QuickFacts.....	5
Business and Geography QuickFacts.....	7
Labor Force, Employment, and Unemployment	7
Population	7
Where Workers Work in Highlands County	8
Work Area Profile Summary	9
Work Area Profile Summary - Demographics	10
Where Workers Live in Highlands County	11
Home Area Profile Summary	12
Home Area Profile Summary - Demographics.....	13
Labor Inflow/Outflow Map	14
Labor Inflow/Outflow Summary	15
Work Destination Summary	17
Home Destination Summary	18

Labor Shed Analysis

A labor shed analysis is defined as where workers work and where workers live relative to a user-defined selection area. This analysis helps to determine where a labor market draws its commuting workers. Labor shed studies can draw comparisons between various geographies including state, Congressional District, Metropolitan Statistical Area (MSA), county, Workforce Investment Area (WIA), Zip Code, and Census tract. By indicating how many of the selection area workers work outside the area, labor sheds can help identify potential pools of workers who would be available for work in the user-defined area.

Labor shed studies provide economic developers and existing or prospective employers a tool to understand the local labor market and make informed expansion and site selection decisions. In addition, labor shed studies can help indicate potential impacts from environmental, social, or economic incidents.

OnTheMap, Census Bureau

OnTheMap is a mapping and reporting tool developed by the U.S. Census Bureau showing employment and home locations of workers with companion reports for user-defined areas. It is the first synthetic data product released by the Census Bureau. OnTheMap is an important tool for Florida to perform labor inflow/outflow analyses and provide commuting data to planning and economic development agencies as well as Regional Workforce Boards. OnTheMap data is also used by the Department of Economic Opportunity to help quantify natural disaster impacts for emergency management agencies based on where workers live and where they work.

OnTheMap integrates existing data from state-supplied administrative records on workers and employers with existing federal censuses, surveys, and other administrative records. The state Labor Market Information (LMI) agencies supply key data from unemployment wage records and from businesses each quarter. The Census Bureau merges the state-supplied data with current demographic information to produce the data found in OnTheMap. By combining data from different administrative sources, censuses, and surveys, the Census Bureau produces local employment information that was not previously available.

Florida Department of Economic Opportunity, Bureau of Workforce Statistics and Economic Research (WSER)

The Florida Department of Economic Opportunity, Bureau of Workforce Statistics and Economic Research (WSER), produces, analyzes, and distributes labor statistics to improve economic decision making. These data are produced as part of the federal/state cooperative statistical program with the U.S. Department of Labor, Bureau of Labor Statistics, and the Employment and Training Administration.

Executive Summary

The analysis of workforce and demographic characteristics, including commuting patterns of Highlands County was conducted to provide economic data on the population and labor force living or working in the county. The report is useful for detailing where workers work and live in order to align resources. This report includes population, labor force, and demographics for Highlands County.

Workers employed in Highlands County are clustered in the Health Care and Social Assistance (21.2%) and Retail Trade (15.6%) industries. Workers living in Highlands County are concentrated in the Health Care and Social Assistance (16.1%) and Retail Trade (14.0%) industries.

A detailed examination of commuting patterns for Highlands County shows that the county has a net outflow of -7,645 workers. Using the latest annual Census data available, there were 24,372 workers employed in Highlands County and 32,009 workers living in Highlands County. Of the workers who lived in the county, 17,425 workers (54.4%) were employed outside the county.

With 54.4% of workers who reside in Highlands County employed outside the county, Highlands County was ranked 25th of 67 for the lowest outflow rankings among Florida counties. Leon (20.9%) had the lowest outflow rate, followed by Miami-Dade (22.0%) and Duval (25.5%). Glades (85.1%), Jefferson (82.2%), and Union (79.6%) had the highest worker outflow rates.

Of the 17,433 Highlands County workers employed outside the county, the top destination counties are Polk County (2,695 workers), Lee County (1,679 workers), and Miami-Dade County (1,185 workers). Of the 9,788 Highlands County workers living outside the county, the top origin counties are Polk County (1,841 workers), Hillsborough County (616 workers), and Hardee County (595 workers).

People QuickFacts

	Highlands County	Florida	United States
Population			
Population estimates, July 1, 2019, (V2019)	106,221	21,477,737	328,239,523
Population estimates base, April 1, 2010, (V2019)	98,784	18,804,564	308,758,105
Population, percent change - April 1, 2010 (estimates base) to July 1, 2019, (V2019)	7.5%	14.2%	6.3%
Population, Census, April 1, 2010	98,786	18,801,310	308,745,538
Population, Census, April 1, 2020	X	21,538,187	331,449,281
Age and Sex			
Persons under 5 years, percent	4.3%	5.3%	6.0%
Persons under 18 years, percent	16.8%	19.7%	22.3%
Persons 65 years and over, percent	36.0%	20.9%	16.5%
Female persons, percent	51.2%	51.1%	50.8%
Race and Hispanic Origin			
White alone, percent	85.4%	77.3%	76.3%
Black or African American alone, percent(a)	10.5%	16.9%	13.4%
American Indian and Alaska Native alone, percent(a)	0.7%	0.5%	1.3%
Asian alone, percent(a)	1.5%	3.0%	5.9%
Native Hawaiian and Other Pacific Islander alone, percent(a)	0.1%	0.1%	0.2%
Two or More Races, percent	1.8%	2.2%	2.8%
Hispanic or Latino, percent(b)	21.1%	26.4%	18.5%
White alone, not Hispanic or Latino, percent	66.1%	53.2%	60.1%
Population Characteristics			
Veterans, 2015-2019	10,572	1,440,338	18,230,322
Foreign born persons, percent, 2015-2019	11.0%	20.7%	13.6%
Housing			
Housing units, July 1, 2019, (V2019)	56,107	9,673,682	139,684,244
Owner-occupied housing unit rate, 2015-2019	75.3%	65.4%	64.0%
Median value of owner-occupied housing units, 2015-2019	\$108,100	\$215,300	\$217,500
Median selected monthly owner costs -with a mortgage, 2015-2019	\$999	\$1,503	\$1,595
Median selected monthly owner costs -without a mortgage, 2015-2019	\$342	\$505	\$500
Median gross rent, 2015-2019	\$816	\$1,175	\$1,062
Building permits, 2020	384	164,074	1,471,141

Legend

The vintage year (e.g., V2019) refers to the final year of the series (2010 thru 2019). Different vintage years of estimates are not comparable.

Fact Notes

(a) Includes persons reporting only one race

(b) Hispanics may be of any race, so also are included in applicable race categories

Source: U.S. Census Bureau, State & County QuickFacts.

People QuickFacts (continued)

	Highlands County	Florida	United States
Families & Living Arrangements			
Households, 2015-2019	41,740	7,736,311	120,756,048
Persons per household, 2015-2019	2.43	2.65	2.62
Living in same house 1 year ago, percent of persons age 1 year+, 2015-2019	84.7%	84.5%	85.8%
Language other than English spoken at home, percent of persons age 5 years+, 2015-2019	19.0%	29.4%	21.6%
Computer and Internet Use			
Households with a computer, percent, 2015-2019	83.0%	91.5%	90.3%
Households with a broadband Internet subscription, percent, 2015-2019	74.3%	83.0%	82.7%
Education			
High school graduate or higher, percent of persons age 25 years+, 2015-2019	85.7%	88.2%	88.0%
Bachelor's degree or higher, percent of persons age 25 years+, 2015-2019	17.2%	29.9%	32.1%
Health			
With a disability, under age 65 years, percent, 2015-2019	12.8%	8.6%	8.6%
Persons without health insurance, under age 65 years, percent	19.4%	16.3%	9.5%
Economy			
In civilian labor force, total, percent of population age 16 years+, 2015-2019	42.3%	58.5%	63.0%
In civilian labor force, female, percent of population age 16 years+, 2015-2019	39.1%	54.3%	58.3%
Total accommodation and food services sales, 2012 (\$1,000)(c)	110,569	49,817,925	708,138,598
Total health care and social assistance receipts/revenue, 2012 (\$1,000)(c)	576,468	124,061,425	2,040,441,203
Total manufacturers shipments, 2012 (\$1,000)(c)	213,986	96,924,106	5,696,729,632
Total merchant wholesaler sales, 2012 (\$1,000)(c)	D	252,626,608	5,208,023,478
Total retail sales, 2012 (\$1,000)(c)	1,112,507	273,867,145	4,219,821,871
Total retail sales per capita, 2012(c)	\$11,337	\$14,177	\$13,443
Transportation			
Mean travel time to work (minutes), workers age 16 years+, 2015-2019	20.6	27.8	26.9
Income & Poverty			
Median household income (in 2019 dollars), 2015-2019	\$40,942	\$55,660	\$62,843
Per capita income in past 12 months (in 2019 dollars), 2015-2019	\$25,752	\$31,619	\$34,103
Persons in poverty, percent	15.8%	12.7%	10.5%

Legend

The vintage year (e.g., V2019) refers to the final year of the series (2010 thru 2019). Different vintage years of estimates are not comparable.

Fact Notes

(c) Economic Census - Puerto Rico data are not comparable to U.S. Economic Census data

Value Flags

"D" Suppressed to avoid disclosure of confidential information

Source: U.S. Census Bureau, State & County QuickFacts.

Business and Geography QuickFacts

	Highlands County	Florida	United States
Businesses			
Total employer establishments, 2019	1,959	574,51	7,959,103
Total employment, 2019	20,941	8,860,04	132,989,428
Total annual payroll, 2019 (\$1,000)	706,295	426,908,31	7,428,553,593
Total employment, percent change, 2018-2019	0.5%	2.2%	1.6%
Total nonemployer establishments, 2018	6,295	2,388,050	26,485,532
All firms, 2012	6,730	2,100,187	27,626,360
Men-owned firms, 2012	3,426	1,084,885	14,844,597
Women-owned firms, 2012	2,449	807,817	9,878,397
Minority-owned firms, 2012	2,033	926,112	7,952,386
Nonminority-owned firms, 2012	4,423	1,121,749	18,987,918
Veteran-owned firms, 2012	739	185,756	2,521,682
Nonveteran-owned firms, 2012	5,574	1,846,686	24,070,685
Geography			
Population per square mile, 2010	97.2	350.6	87.4
Land area in square miles, 2010	1,016.62	53,624.76	3,531,905.43
FIPS Code	12055	12	1

Source: U.S. Census Bureau, State & County QuickFacts.

Labor Force, Employment, and Unemployment

	April 2021				April 2020			
	LABOR	EMPLOY-	UNEMPLOYMENT		LABOR	EMPLOY-	UNEMPLOYMENT	
	FORCE	MENT	LEVEL	RATE (%)	FORCE	MENT	LEVEL	RATE (%)
Workforce Region 19	78,490	74,280	4,210	5.4	71,407	64,764	6,643	9.3
DeSoto County	15,528	14,858	670	4.3	14,074	13,054	1,020	7.2
Hardee County	9,086	8,613	473	5.2	8,169	7,559	610	7.5
Highlands County	36,100	33,820	2,280	6.3	32,968	29,220	3,748	11.4
Okeechobee County	17,776	16,989	787	4.4	16,196	14,931	1,265	7.8
Florida	10,357,000	9,825,000	532,000	5.1	9,718,000	8,369,000	1,349,000	13.9
United States	160,379,000	151,160,000	9,220,000	5.7	155,830,000	133,326,000	22,504,000	14.4

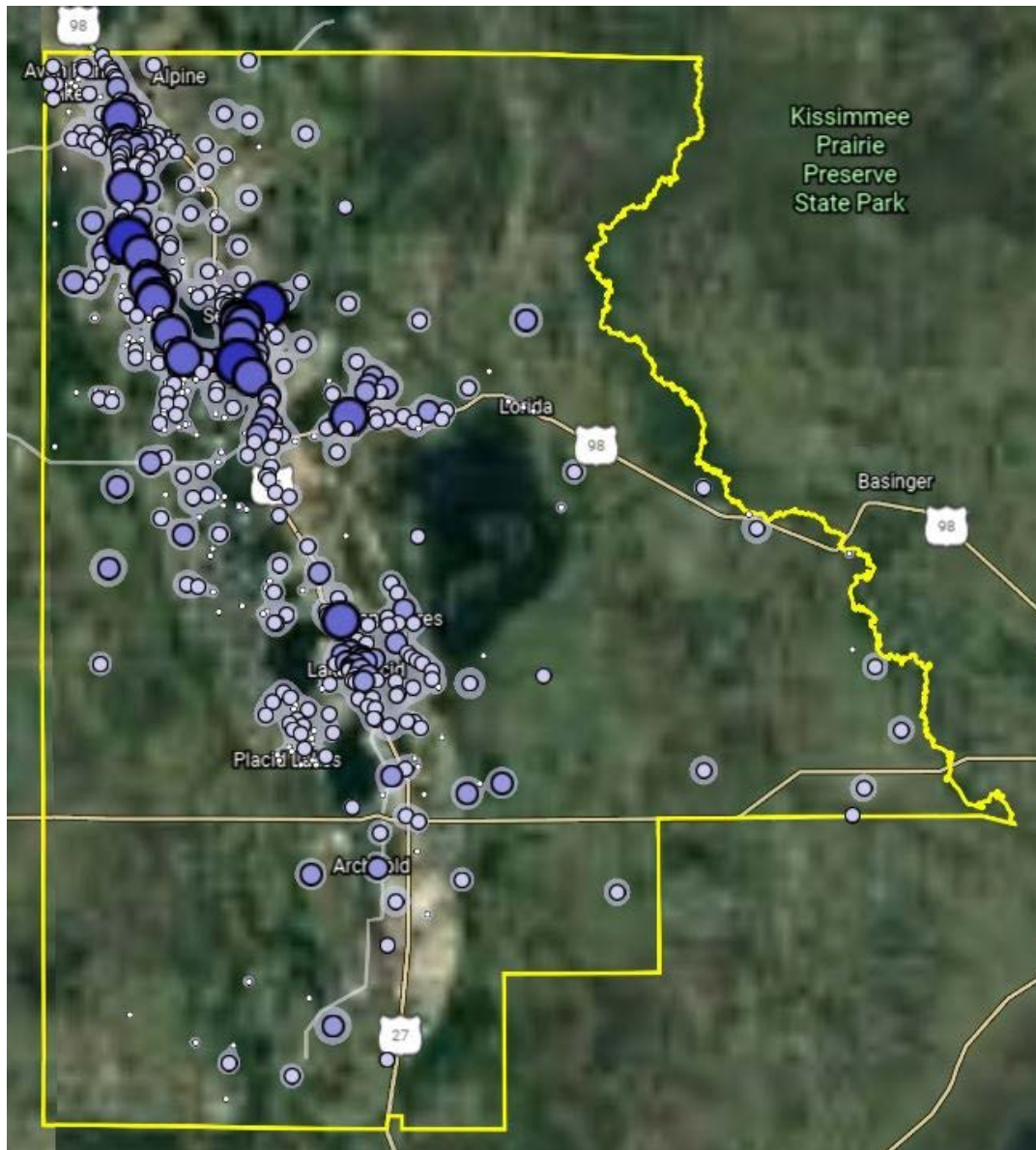
Source: U.S. Department of Labor, Bureau of Labor Statistics, Local Area Unemployment Statistics.

Population

	Population Estimate (as of July 1)							
	2012	2013	2014	2015	2016	2017	2018	2019
Workforce Region 19	200,376	199,775	200,757	202,816	206,284	209,522	211,123	213,327
DeSoto County	35,005	34,905	35,338	35,648	36,255	37,241	37,368	38,001
Hardee County	27,439	27,311	27,266	27,177	27,219	27,154	27,168	26,937
Highlands County	98,222	98,077	98,584	100,137	102,041	103,852	104,933	106,221
Okeechobee County	39,710	39,482	39,569	39,854	40,769	41,275	41,654	42,168
Florida	19,297,822	19,545,621	19,845,911	20,209,042	20,613,477	20,963,613	21,244,317	21,477,737
United States	313,830,990	315,993,715	318,301,008	320,635,163	322,941,311	324,985,539	326,687,501	328,239,523

Source: U.S. Census Bureau, Population Division.

Where Workers Work in Highlands County



Source: U.S. Census Bureau, OnTheMap Application and Longitudinal Employer-Household Dynamics program.

Map Legend

Job Density [Jobs/Sq. Mile]

- 5 - 185
- 186 - 727
- 728 - 1,631
- 1,632 - 2,895
- 2,896 - 4,522

Job Count [Jobs/Census Block]

- 1 - 3
- 4 - 43
- 44 - 216
- 217 - 682
- 683 - 1,664

Work Area Profile Summary

	Count	Share
Total Primary Jobs	24,372	100.0%
Jobs by Worker Age		
Age 29 or younger	5,194	21.3%
Age 30 to 54	12,035	49.4%
Age 55 or older	7,143	29.3%
Jobs by Earnings		
\$1,250 per month or less	6,354	26.1%
\$1,251 to \$3,333 per month	11,222	46.0%
More than \$3,333 per month	6,796	27.9%
Jobs by NAICS Industry Sector		
Agriculture, Forestry, Fishing and Hunting	2,063	8.5%
Mining, Quarrying, and Oil and Gas Extraction	0	0.0%
Utilities	80	0.3%
Construction	1,309	5.4%
Manufacturing	629	2.6%
Wholesale Trade	569	2.3%
Retail Trade	3,803	15.6%
Transportation and Warehousing	301	1.2%
Information	109	0.4%
Finance and Insurance	458	1.9%
Real Estate and Rental and Leasing	335	1.4%
Professional, Scientific, and Technical Services	776	3.2%
Management of Companies and Enterprises	86	0.4%
Administration & Support, Waste Management and Remediation	1,245	5.1%
Educational Services	2,243	9.2%
Health Care and Social Assistance	5,176	21.2%
Arts, Entertainment, and Recreation	587	2.4%
Accommodation and Food Services	2,456	10.1%
Other Services (excluding Public Administration)	665	2.7%
Public Administration	1,482	6.1%

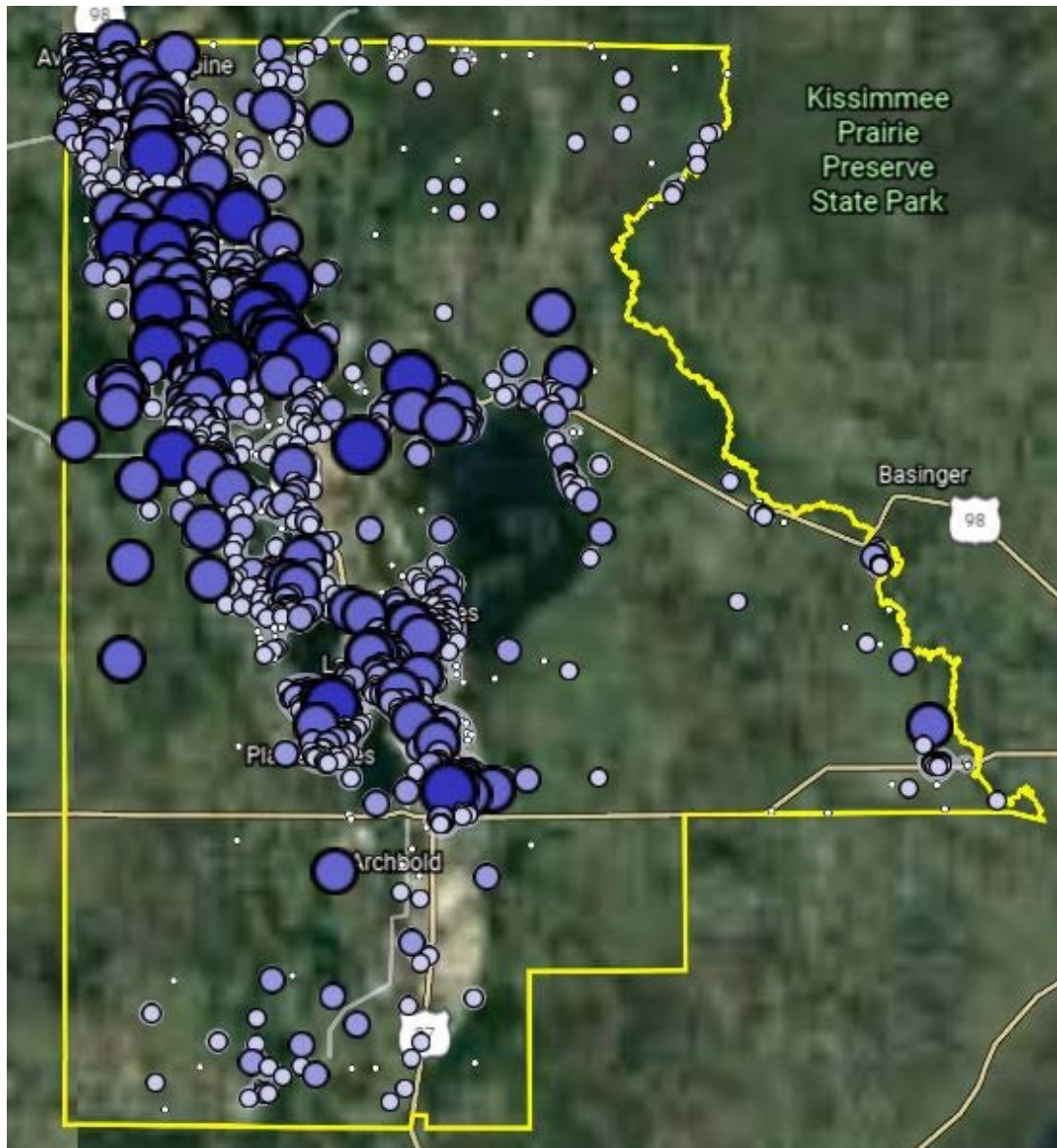
Source: U.S. Census Bureau, OnTheMap Application and Longitudinal Employer-Household Dynamics program.

Work Area Profile Summary - Demographics

	Count	Share
Jobs by Worker Race		
White Alone	20,160	82.7%
Black or African American Alone	3,062	12.6%
American Indian or Alaska Native Alone	178	0.7%
Asian Alone	636	2.6%
Native Hawaiian or Other Pacific Islander Alone	26	0.1%
Two or More Race Groups	310	1.3%
Jobs by Worker Ethnicity		
Not Hispanic or Latino	19,234	78.9%
Hispanic or Latino	5,138	21.1%
Jobs by Worker Educational Attainment		
Less than high school	3,470	14.2%
High school or equivalent, no college	5,593	22.9%
Some college or Associate degree	6,116	25.1%
Bachelor's degree or advanced degree	3,999	16.4%
Educational attainment not available (workers aged 29 or younger)	5,194	21.3%
Jobs by Worker Sex		
Male	11,330	46.5%
Female	13,042	53.5%

Source: U.S. Census Bureau, OnTheMap Application and Longitudinal Employer-Household Dynamics program.

Where Workers Live in Highlands County



Source: U.S. Census Bureau, OnTheMap Application and Longitudinal Employer-Household Dynamics program.

Map Legend

Job Density [Jobs/Sq. Mile]

- 5 - 48
- 49 - 180
- 181 - 399
- 400 - 707
- 708 - 1,102

Job Count [Jobs/Census Block]

- 1 - 2
- 3 - 14
- 15 - 45
- 46 - 105
- 106 - 206

Home Area Profile Summary

	Count	Share
Total Primary Jobs	32,017	100.0%
Jobs by Worker Age		
Age 29 or younger	6,941	21.7%
Age 30 to 54	15,819	49.4%
Age 55 or older	9,257	28.9%
Jobs by Earnings		
\$1,250 per month or less	7,436	23.2%
\$1,251 to \$3,333 per month	14,380	44.9%
More than \$3,333 per month	10,201	31.9%
Jobs by NAICS Industry Sector		
Agriculture, Forestry, Fishing and Hunting	1,844	5.8%
Mining, Quarrying, and Oil and Gas Extraction	27	0.1%
Utilities	107	0.3%
Construction	2,382	7.4%
Manufacturing	1,289	4.0%
Wholesale Trade	967	3.0%
Retail Trade	4,494	14.0%
Transportation and Warehousing	744	2.3%
Information	307	1.0%
Finance and Insurance	844	2.6%
Real Estate and Rental and Leasing	547	1.7%
Professional, Scientific, and Technical Services	1,337	4.2%
Management of Companies and Enterprises	244	0.8%
Administration & Support, Waste Management and Remediation	2,117	6.6%
Educational Services	2,618	8.2%
Health Care and Social Assistance	5,141	16.1%
Arts, Entertainment, and Recreation	736	2.3%
Accommodation and Food Services	3,078	9.6%
Other Services (excluding Public Administration)	957	3.0%
Public Administration	2,237	7.0%

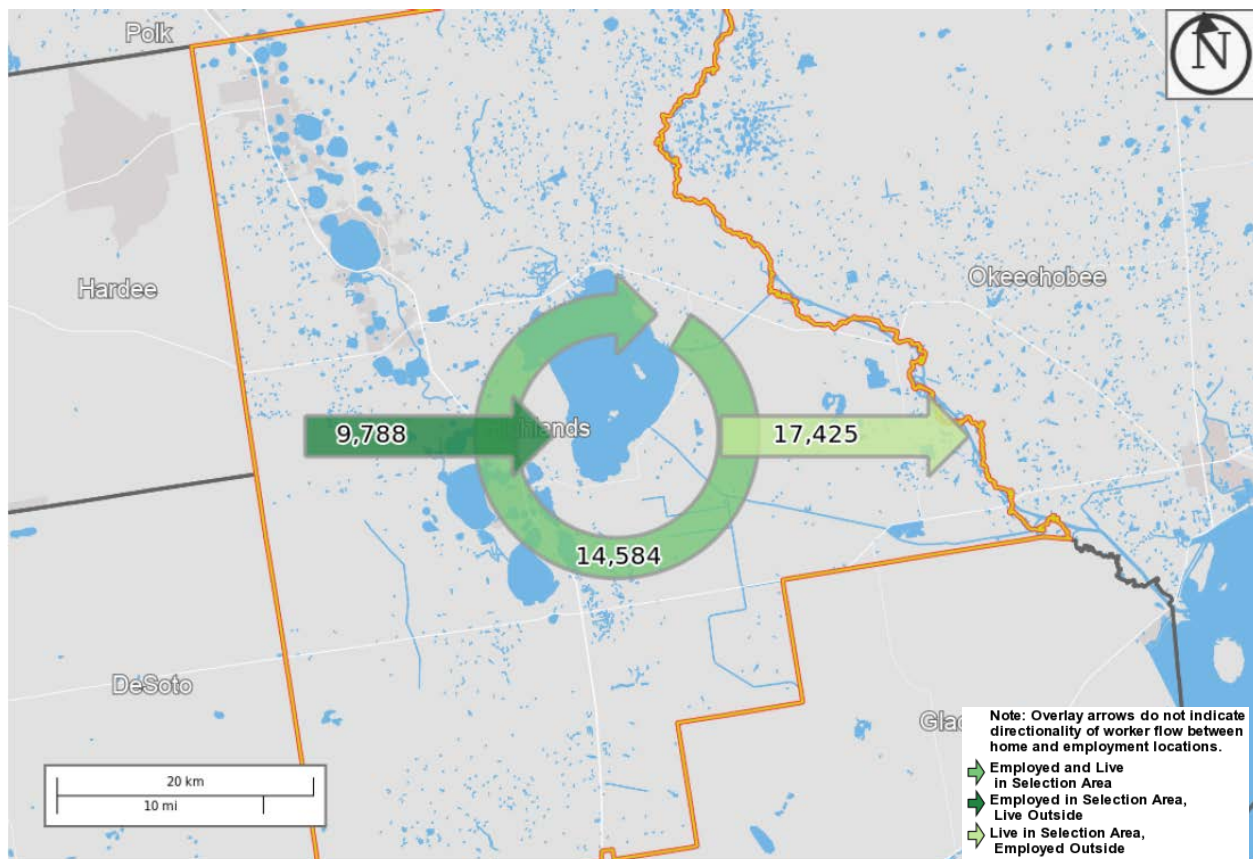
Source: U.S. Census Bureau, OnTheMap Application and Longitudinal Employer-Household Dynamics program.

Home Area Profile Summary - Demographics

	Count	Share
Jobs by Worker Race		
White Alone	26,414	82.5%
Black or African American Alone	4,000	12.5%
American Indian or Alaska Native Alone	250	0.8%
Asian Alone	817	2.6%
Native Hawaiian or Other Pacific Islander Alone	59	0.2%
Two or More Race Groups	477	1.5%
Jobs by Worker Ethnicity		
Not Hispanic or Latino	25,386	79.3%
Hispanic or Latino	6,631	20.7%
Jobs by Worker Educational Attainment		
Less than high school	4,340	13.6%
High school or equivalent, no college	7,147	22.3%
Some college or Associate degree	7,992	25.0%
Bachelor's degree or advanced degree	5,597	17.5%
Educational attainment not available (workers aged 29 or younger)	6,941	21.7%
Jobs by Worker Sex		
Male	15,931	49.8%
Female	16,086	50.2%

Source: U.S. Census Bureau, OnTheMap Application and Longitudinal Employer-Household Dynamics program.

Labor Inflow/Outflow Map



Source: U.S. Census Bureau, OnTheMap Application and Longitudinal Employer-Household Dynamics program.

Of the 24,372 people who are employed in Highlands County, 14,584 (59.8%) live and work in the county. There are 9,788 (40.2%) workers who live outside Highlands County and work within the county. Of the 32,017 workers who live within Highlands County, 17,433 (54.4%) residents work outside the county. There is a net outflow of -7,645 workers from Highlands County.

Labor Inflow/Outflow Summary

	Count	Share
Highlands County Labor Market Size (Primary Jobs)		
Employed in the Selection Area	24,372	100.0%
Living in the Selection Area	32,017	131.4%
Net Job Inflow (+) or Outflow (-)	-7,645	-
Highlands County Labor Force Efficiency (Primary Jobs)		
Living in the Selection Area	32,017	100.0%
Living and Employed in the Selection Area	14,584	45.6%
Living in the Selection Area but Employed Outside	17,433	54.4%
Highlands County Employment Efficiency (Primary Jobs)		
Employed in the Selection Area	24,372	100.0%
Employed and Living in the Selection Area	14,584	59.8%
Employed in the Selection Area but Living Outside	9,788	40.2%
Outflow Job Characteristics		
External Jobs Filled by Residents	17,433	100.0%
Workers Aged 29 or younger	4,237	24.3%
Workers Aged 30 to 54	8,544	49.0%
Workers Aged 55 or older	4,652	26.7%
Workers Earning \$1,250 per month or less	3,977	22.8%
Workers Earning \$1,251 to \$3,333 per month	7,562	43.4%
Workers Earning More than \$3,333 per month	5,894	33.8%
Workers in the "Goods Producing" Industry Class	3,179	18.2%
Workers in the "Trade, Transportation, and Utilities" Industry Class	4,496	25.8%
Workers in the "All Other Services" Industry Class	9,758	56.0%

Source: U.S. Census Bureau, OnTheMap Application and Longitudinal Employer-Household Dynamics program.

Labor Inflow/Outflow Summary (continued)

	Count	Share
Inflow Job Characteristics (Primary Jobs)		
Internal Jobs Filled by Outside Workers	9,788	100.0%
Workers Aged 29 or younger	2,490	25.4%
Workers Aged 30 to 54	4,760	48.6%
Workers Aged 55 or older	2,538	25.9%
Workers Earning \$1,250 per month or less	2,895	29.6%
Workers Earning \$1,251 to \$3,333 per month	4,404	45.0%
Workers Earning More than \$3,333 per month	2,489	25.4%
Workers in the "Goods Producing" Industry Class	1,638	16.7%
Workers in the "Trade, Transportation, and Utilities" Industry Class	2,937	30.0%
Workers in the "All Other Services" Industry Class	5,213	53.3%
Interior Flow Job Characteristics (Primary Jobs)		
Internal Jobs Filled by Residents	14,584	100.0%
Workers Aged 29 or younger	2,704	18.5%
Workers Aged 30 to 54	7,275	49.9%
Workers Aged 55 or older	4,605	31.6%
Workers Earning \$1,250 per month or less	3,459	23.7%
Workers Earning \$1,251 to \$3,333 per month	6,818	46.7%
Workers Earning More than \$3,333 per month	4,307	29.5%
Workers in the "Goods Producing" Industry Class	2,363	16.2%
Workers in the "Trade, Transportation, and Utilities" Industry Class	1,816	12.5%
Workers in the "All Other Services" Industry Class	10,405	71.3%

Source: U.S. Census Bureau, OnTheMap Application and Longitudinal Employer-Household Dynamics program.

Work Destination Summary

Where Workers are Employed Who Live in Highlands County

	Count	Share
Total Primary Jobs	32,017	100.0%
Job Counts by Counties Where Workers are Employed - Primary Jobs		
Highlands County, FL	14,584	45.6%
Polk County, FL	2,695	8.4%
Lee County, FL	1,679	5.2%
Miami-Dade County, FL	1,185	3.7%
Hillsborough County, FL	1,141	3.6%
Palm Beach County, FL	1,023	3.2%
Broward County, FL	992	3.1%
Hardee County, FL	721	2.3%
Sarasota County, FL	703	2.2%
Orange County, FL	684	2.1%
St. Lucie County, FL	657	2.1%
Charlotte County, FL	587	1.8%
Collier County, FL	551	1.7%
Manatee County, FL	526	1.6%
Pinellas County, FL	438	1.4%
Okeechobee County, FL	358	1.1%
DeSoto County, FL	322	1.0%
Indian River County, FL	287	0.9%
Martin County, FL	243	0.8%
Brevard County, FL	234	0.7%
Seminole County, FL	211	0.7%
Duval County, FL	206	0.6%
Hendry County, FL	202	0.6%
Glades County, FL	199	0.6%
Osceola County, FL	199	0.6%
All Other Locations	1,390	4.3%

Source: U.S. Census Bureau, OnTheMap Application and Longitudinal Employer-Household Dynamics program.

Home Destination Summary

Where Workers Live Who are Employed in Highlands County

	Count	Share
Total Primary Jobs	24,372	100.0%
Job Counts by Counties Where Workers Live - Primary Jobs		
Highlands County, FL	14,584	59.8%
Polk County, FL	1,841	7.6%
Hillsborough County, FL	616	2.5%
Hardee County, FL	595	2.4%
Lee County, FL	483	2.0%
Orange County, FL	467	1.9%
Palm Beach County, FL	413	1.7%
Miami-Dade County, FL	360	1.5%
Pinellas County, FL	334	1.4%
Broward County, FL	316	1.3%
Indian River County, FL	308	1.3%
Brevard County, FL	281	1.2%
Osceola County, FL	278	1.1%
Sarasota County, FL	256	1.1%
St. Lucie County, FL	240	1.0%
DeSoto County, FL	226	0.9%
Collier County, FL	225	0.9%
Manatee County, FL	214	0.9%
Pasco County, FL	212	0.9%
Seminole County, FL	184	0.8%
Charlotte County, FL	175	0.7%
Okeechobee County, FL	173	0.7%
Hendry County, FL	163	0.7%
Volusia County, FL	152	0.6%
Lake County, FL	142	0.6%
All Other Locations	1,134	4.7%

Source: U.S. Census Bureau, OnTheMap Application and Longitudinal Employer-Household Dynamics program.

**Florida Department of Economic Opportunity
Bureau of Workforce Statistics and Economic Research
(WSER)**

**Caldwell Building
MSC G-020
107 E. Madison Street
Tallahassee, Florida 32399-4111
Phone (850) 245-7257**



www.floridajobs.org/labor-market-information