

Summary of Employment, Demographics, and Commuting Patterns for Dixie County, Florida



May 2021

Contents

Labor Shed Analysis	3
OnTheMap, Census Bureau	3
Florida Department of Economic Opportunity, Bureau of Workforce Statistics and Economic Research (WSER)	3
Executive Summary	4
People QuickFacts.....	5
Business and Geography QuickFacts.....	7
Labor Force, Employment, and Unemployment	7
Population	7
Where Workers Work in Dixie County	8
Work Area Profile Summary	9
Work Area Profile Summary - Demographics	10
Where Workers Live in Dixie County	11
Home Area Profile Summary	12
Home Area Profile Summary - Demographics.....	13
Labor Inflow/Outflow Map	14
Labor Inflow/Outflow Summary	15
Work Destination Summary	17
Home Destination Summary	18

Labor Shed Analysis

A labor shed analysis is defined as where workers work and where workers live relative to a user-defined selection area. This analysis helps to determine where a labor market draws its commuting workers. Labor shed studies can draw comparisons between various geographies including state, Congressional District, Metropolitan Statistical Area (MSA), county, Workforce Investment Area (WIA), Zip Code, and Census tract. By indicating how many of the selection area workers work outside the area, labor sheds can help identify potential pools of workers who would be available for work in the user-defined area.

Labor shed studies provide economic developers and existing or prospective employers a tool to understand the local labor market and make informed expansion and site selection decisions. In addition, labor shed studies can help indicate potential impacts from environmental, social, or economic incidents.

OnTheMap, Census Bureau

OnTheMap is a mapping and reporting tool developed by the U.S. Census Bureau showing employment and home locations of workers with companion reports for user-defined areas. It is the first synthetic data product released by the Census Bureau. OnTheMap is an important tool for Florida to perform labor inflow/outflow analyses and provide commuting data to planning and economic development agencies as well as Regional Workforce Boards. OnTheMap data is also used by the Department of Economic Opportunity to help quantify natural disaster impacts for emergency management agencies based on where workers live and where they work.

OnTheMap integrates existing data from state-supplied administrative records on workers and employers with existing federal censuses, surveys, and other administrative records. The state Labor Market Information (LMI) agencies supply key data from unemployment wage records and from businesses each quarter. The Census Bureau merges the state-supplied data with current demographic information to produce the data found in OnTheMap. By combining data from different administrative sources, censuses, and surveys, the Census Bureau produces local employment information that was not previously available.

Florida Department of Economic Opportunity, Bureau of Workforce Statistics and Economic Research (WSER)

The Florida Department of Economic Opportunity, Bureau of Workforce Statistics and Economic Research (WSER), produces, analyzes, and distributes labor statistics to improve economic decision making. These data are produced as part of the federal/state cooperative statistical program with the U.S. Department of Labor, Bureau of Labor Statistics, and the Employment and Training Administration.

Executive Summary

The analysis of workforce and demographic characteristics, including commuting patterns of Dixie County was conducted to provide economic data on the population and labor force living or working in the county. The report is useful for detailing where workers work and live in order to align resources. This report includes population, labor force, and demographics for Dixie County.

Workers employed in Dixie County are clustered in the Public Administration (20.0%) and Educational Services (17.7%) industries. Workers living in Dixie County are concentrated in the Retail Trade (13.3%) and Public Administration (13.3%) industries.

A detailed examination of commuting patterns for Dixie County shows that the county has a net outflow of -2,205 workers. Using the latest annual Census data available, there were 2,334 workers employed in Dixie County and 4,539 workers living in Dixie County. Of the workers who lived in the county, 3,111 workers (68.5%) were employed outside the county.

With 68.5% of workers who reside in Dixie County employed outside the county, Dixie County was ranked 23rd of 67 for the highest outflow rankings among Florida counties. Leon (20.9%) had the lowest outflow rate, followed by Miami-Dade (22.0%) and Duval (25.5%). Glades (85.1%), Jefferson (82.2%), and Union (79.6%) had the highest worker outflow rates.

Of the 3,111 Dixie County workers employed outside the county, the top destination counties are Alachua County (538 workers), Levy County (311 workers), and Gilchrist County (255 workers). Of the 906 Dixie County workers living outside the county, the top origin counties are Levy County (155 workers), Gilchrist County (139 workers), and Alachua County (66 workers).

People QuickFacts

	Dixie County	Florida	United States
Population			
Population estimates, July 1, 2019, (V2019)	16,826	21,477,737	328,239,523
Population estimates base, April 1, 2010, (V2019)	16,422	18,804,564	308,758,105
Population, percent change - April 1, 2010 (estimates base) to July 1, 2019, (V2019)	2.5%	14.2%	6.3%
Population, Census, April 1, 2010	16,422	18,801,310	308,745,538
Population, Census, April 1, 2020	X	21,538,187	331,449,281
Age and Sex			
Persons under 5 years, percent	4.6%	5.3%	6.0%
Persons under 18 years, percent	18.3%	19.7%	22.3%
Persons 65 years and over, percent	23.7%	20.9%	16.5%
Female persons, percent	44.9%	51.1%	50.8%
Race and Hispanic Origin			
White alone, percent	87.3%	77.3%	76.3%
Black or African American alone, percent(a)	9.8%	16.9%	13.4%
American Indian and Alaska Native alone, percent(a)	0.6%	0.5%	1.3%
Asian alone, percent(a)	0.4%	3.0%	5.9%
Native Hawaiian and Other Pacific Islander alone, percent(a)	Z	0.1%	0.2%
Two or More Races, percent	1.8%	2.2%	2.8%
Hispanic or Latino, percent(b)	4.2%	26.4%	18.5%
White alone, not Hispanic or Latino, percent	83.6%	53.2%	60.1%
Population Characteristics			
Veterans, 2015-2019	1,947	1,440,338	18,230,322
Foreign born persons, percent, 2015-2019	2.8%	20.7%	13.6%
Housing			
Housing units, July 1, 2019, (V2019)	9,536	9,673,682	139,684,244
Owner-occupied housing unit rate, 2015-2019	78.6%	65.4%	64.0%
Median value of owner-occupied housing units, 2015-2019	\$78,500	\$215,300	\$217,500
Median selected monthly owner costs -with a mortgage, 2015-2019	\$887	\$1,503	\$1,595
Median selected monthly owner costs -without a mortgage, 2015-2019	\$274	\$505	\$500
Median gross rent, 2015-2019	\$631	\$1,175	\$1,062
Building permits, 2020	43	164,074	1,471,141

Legend

The vintage year (e.g., V2019) refers to the final year of the series (2010 thru 2019). Different vintage years of estimates are not comparable.

Fact Notes

(a) Includes persons reporting only one race

(b) Hispanics may be of any race, so also are included in applicable race categories

Value Flags

"Z" Value greater than zero but less than half unit of measure shown

Source: U.S. Census Bureau, State & County QuickFacts.

People QuickFacts (continued)

	Dixie County	Florida	United States
Families & Living Arrangements			
Households, 2015-2019	6,504	7,736,311	120,756,048
Persons per household, 2015-2019	2.31	2.65	2.62
Living in same house 1 year ago, percent of persons age 1 year+, 2015-2019	85.9%	84.5%	85.8%
Language other than English spoken at home, percent of persons age 5 years+, 2015-2019	4.2%	29.4%	21.6%
Computer and Internet Use			
Households with a computer, percent, 2015-2019	79.4%	91.5%	90.3%
Households with a broadband Internet subscription, percent, 2015-2019	58.4%	83.0%	82.7%
Education			
High school graduate or higher, percent of persons age 25 years+, 2015-2019	78.4%	88.2%	88.0%
Bachelor's degree or higher, percent of persons age 25 years+, 2015-2019	10.4%	29.9%	32.1%
Health			
With a disability, under age 65 years, percent, 2015-2019	17.7%	8.6%	8.6%
Persons without health insurance, under age 65 years, percent	15.9%	16.3%	9.5%
Economy			
In civilian labor force, total, percent of population age 16 years+, 2015-2019	38.6%	58.5%	63.0%
In civilian labor force, female, percent of population age 16 years+, 2015-2019	40.2%	54.3%	58.3%
Total accommodation and food services sales, 2012 (\$1,000)(c)	7,260	49,817,925	708,138,598
Total health care and social assistance receipts/revenue, 2012 (\$1,000)(c)	9,062	124,061,425	2,040,441,203
Total manufacturers shipments, 2012 (\$1,000)(c)	D	96,924,106	5,696,729,632
Total merchant wholesaler sales, 2012 (\$1,000)(c)	612	252,626,608	5,208,023,478
Total retail sales, 2012 (\$1,000)(c)	56,867	273,867,145	4,219,821,871
Total retail sales per capita, 2012(c)	\$3,526	\$14,177	\$13,443
Transportation			
Mean travel time to work (minutes), workers age 16 years+, 2015-2019	24.3	27.8	26.9
Income & Poverty			
Median household income (in 2019 dollars), 2015-2019	\$39,828	\$55,660	\$62,843
Per capita income in past 12 months (in 2019 dollars), 2015-2019	\$21,144	\$31,619	\$34,103
Persons in poverty, percent	22.2%	12.7%	10.5%

Legend

The vintage year (e.g., V2019) refers to the final year of the series (2010 thru 2019). Different vintage years of estimates are not comparable.

Fact Notes

(c) Economic Census - Puerto Rico data are not comparable to U.S. Economic Census data

Value Flags

"D" Suppressed to avoid disclosure of confidential information

Source: U.S. Census Bureau, State & County QuickFacts.

Business and Geography QuickFacts

	Dixie County	Florida	United States
Businesses			
Total employer establishments, 2019	187	574,51	7,959,103
Total employment, 2019	1,334	8,860,04	132,989,428
Total annual payroll, 2019 (\$1,000)	44,826	426,908,31	7,428,553,593
Total employment, percent change, 2018-2019	-9.1%	2.2%	1.6%
Total nonemployer establishments, 2018	858	2,388,050	26,485,532
All firms, 2012	820	2,100,187	27,626,360
Men-owned firms, 2012	414	1,084,885	14,844,597
Women-owned firms, 2012	335	807,817	9,878,397
Minority-owned firms, 2012	64	926,112	7,952,386
Nonminority-owned firms, 2012	738	1,121,749	18,987,918
Veteran-owned firms, 2012	101	185,756	2,521,682
Nonveteran-owned firms, 2012	694	1,846,686	24,070,685
Geography			
Population per square mile, 2010	23.3	350.6	87.4
Land area in square miles, 2010	705.05	53,624.76	3,531,905.43
FIPS Code	12029	12	1

Source: U.S. Census Bureau, State & County QuickFacts.

Labor Force, Employment, and Unemployment

	April 2021				April 2020			
	LABOR	EMPLOY-	UNEMPLOYMENT	RATE (%)	LABOR	EMPLOY-	UNEMPLOYMENT	RATE (%)
	FORCE	MENT	LEVEL		FORCE	MENT	LEVEL	
Workforce Region 07	48,725	46,456	2,269	4.7	44,343	40,486	3,857	8.7
Columbia County	30,369	28,883	1,486	4.9	27,692	25,033	2,659	9.6
Dixie County	6,295	5,998	297	4.7	5,524	5,123	401	7.3
Gilchrist County	7,422	7,129	293	3.9	6,586	6,094	492	7.5
Union County	4,639	4,446	193	4.2	4,541	4,236	305	6.7
Florida	10,357,000	9,825,000	532,000	5.1	9,718,000	8,369,000	1,349,000	13.9
United States	160,379,000	151,160,000	9,220,000	5.7	155,830,000	133,326,000	22,504,000	14.4

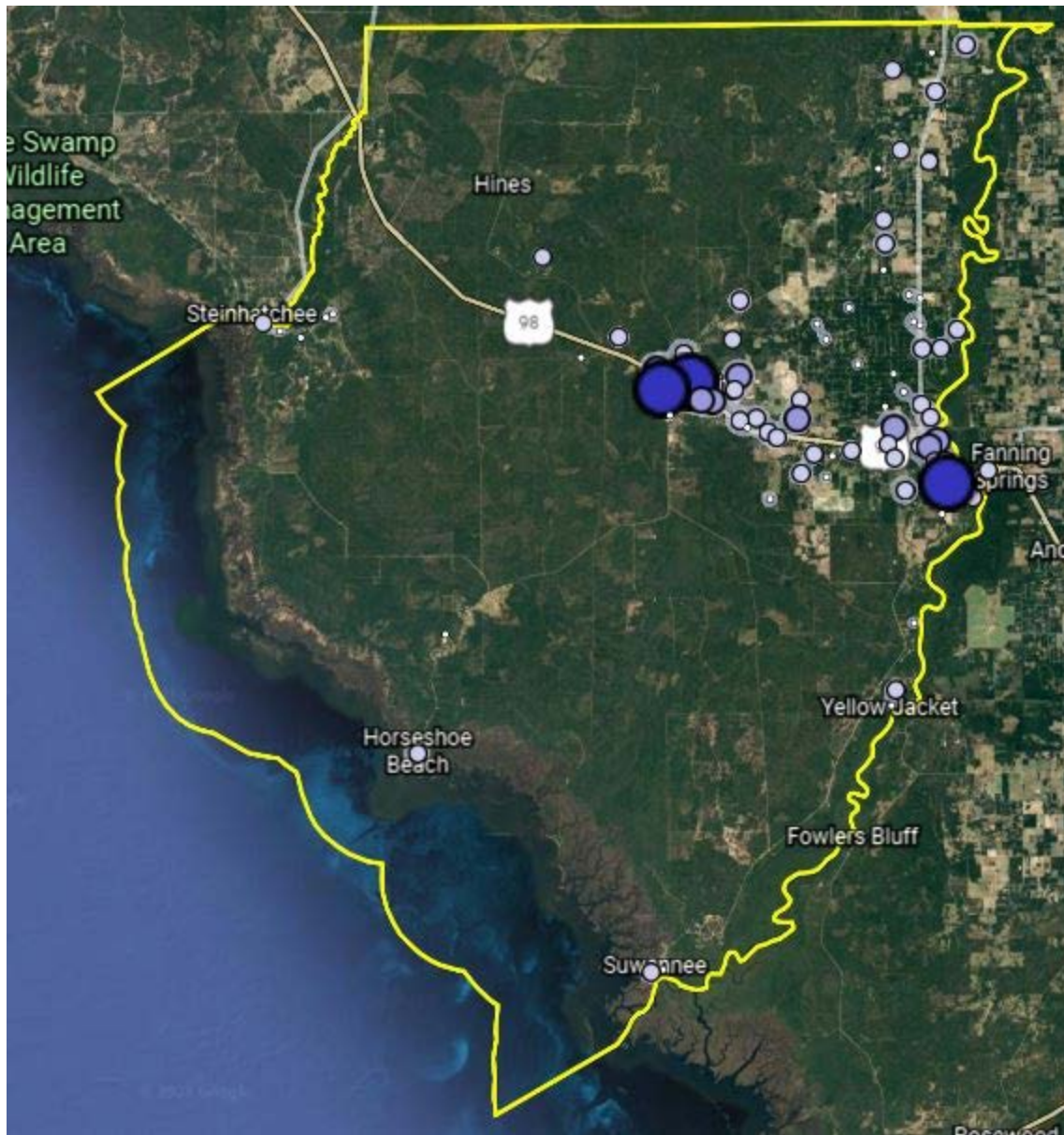
Source: U.S. Department of Labor, Bureau of Labor Statistics, Local Area Unemployment Statistics.

Population

	Population Estimate (as of July 1)							
	2012	2013	2014	2015	2016	2017	2018	2019
Workforce Region 07	116,189	115,618	116,069	117,218	118,590	119,962	120,965	122,331
Columbia County	67,884	67,417	67,779	68,222	69,265	69,999	70,668	71,686
Dixie County	16,153	16,084	16,041	16,353	16,465	16,615	16,685	16,826
Gilchrist County	16,897	16,957	16,991	17,378	17,622	17,900	18,284	18,582
Union County	15,255	15,160	15,258	15,265	15,238	15,448	15,328	15,237
Florida	19,297,822	19,545,621	19,845,911	20,209,042	20,613,477	20,963,613	21,244,317	21,477,737
United States	313,830,990	315,993,715	318,301,008	320,635,163	322,941,311	324,985,539	326,687,501	328,239,523

Source: U.S. Census Bureau, Population Division.

Where Workers Work in Dixie County



Source: U.S. Census Bureau, OnTheMap Application and Longitudinal Employer-Household Dynamics program.

Map Legend

Job Density [Jobs/Sq. Mile]

- 5 - 66
- 67 - 249
- 250 - 554
- 555 - 981
- 982 - 1,531

Job Count [Jobs/Census Block]

- 1 - 4
- 5 - 27
- 28 - 90
- 91 - 212
- 213 - 414

Work Area Profile Summary

	Count	Share
Total Primary Jobs	2,334	100.0%
Jobs by Worker Age		
Age 29 or younger	440	18.9%
Age 30 to 54	1,268	54.3%
Age 55 or older	626	26.8%
Jobs by Earnings		
\$1,250 per month or less	577	24.7%
\$1,251 to \$3,333 per month	1,053	45.1%
More than \$3,333 per month	704	30.2%
Jobs by NAICS Industry Sector		
Agriculture, Forestry, Fishing and Hunting	140	6.0%
Mining, Quarrying, and Oil and Gas Extraction	0	0.0%
Utilities	9	0.4%
Construction	105	4.5%
Manufacturing	387	16.6%
Wholesale Trade	14	0.6%
Retail Trade	274	11.7%
Transportation and Warehousing	54	2.3%
Information	1	0.0%
Finance and Insurance	18	0.8%
Real Estate and Rental and Leasing	6	0.3%
Professional, Scientific, and Technical Services	42	1.8%
Management of Companies and Enterprises	10	0.4%
Administration & Support, Waste Management and Remediation	31	1.3%
Educational Services	414	17.7%
Health Care and Social Assistance	129	5.5%
Arts, Entertainment, and Recreation	15	0.6%
Accommodation and Food Services	145	6.2%
Other Services (excluding Public Administration)	74	3.2%
Public Administration	466	20.0%

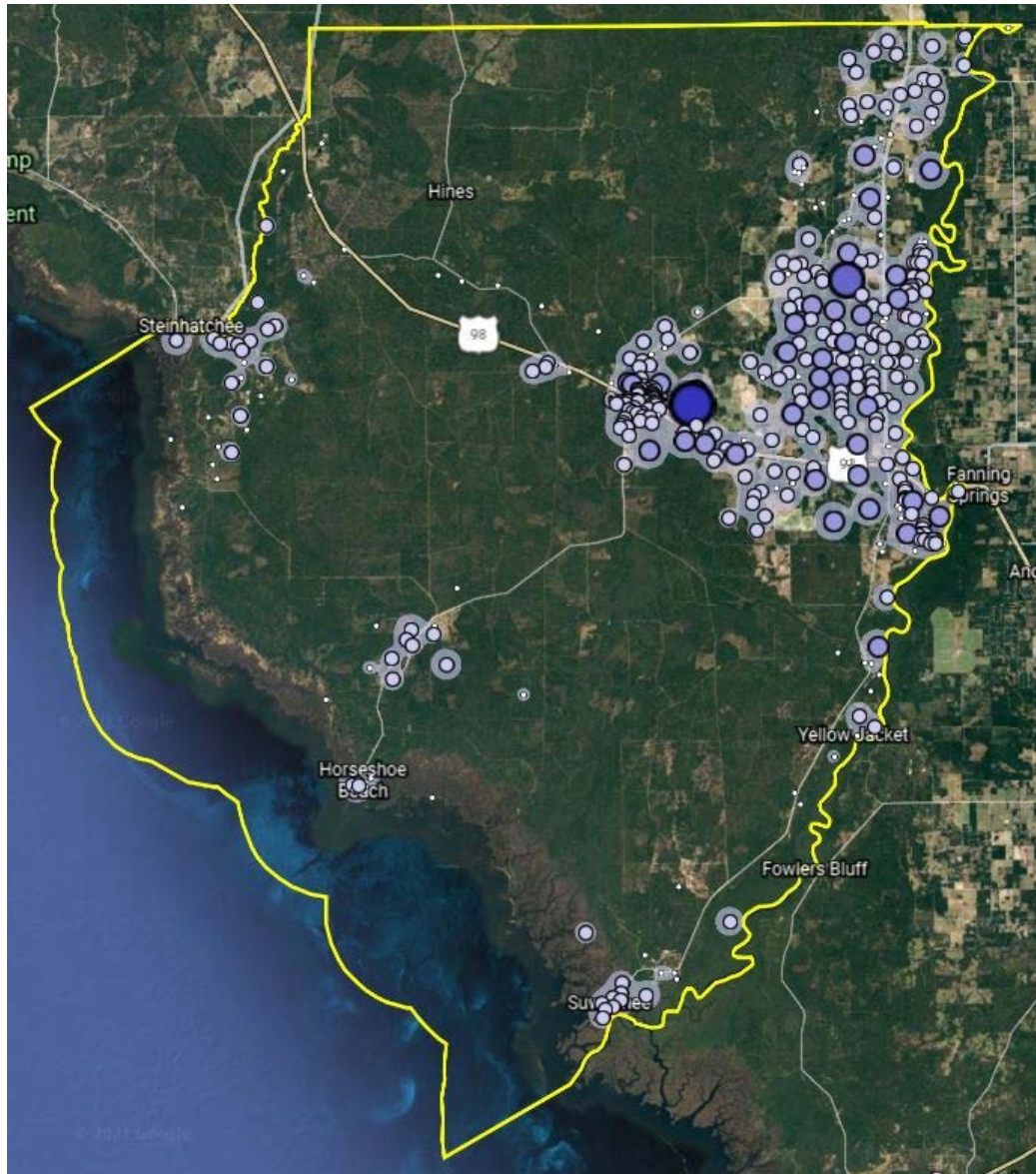
Source: U.S. Census Bureau, OnTheMap Application and Longitudinal Employer-Household Dynamics program.

Work Area Profile Summary - Demographics

	Count	Share
Jobs by Worker Race		
White Alone	2,046	87.7%
Black or African American Alone	226	9.7%
American Indian or Alaska Native Alone	9	0.4%
Asian Alone	24	1.0%
Native Hawaiian or Other Pacific Islander Alone	0	0.0%
Two or More Race Groups	29	1.2%
Jobs by Worker Ethnicity		
Not Hispanic or Latino	2,244	96.1%
Hispanic or Latino	90	3.9%
Jobs by Worker Educational Attainment		
Less than high school	263	11.3%
High school or equivalent, no college	635	27.2%
Some college or Associate degree	634	27.2%
Bachelor's degree or advanced degree	362	15.5%
Educational attainment not available (workers aged 29 or younger)	440	18.9%
Jobs by Worker Sex		
Male	1,266	54.2%
Female	1,068	45.8%

Source: U.S. Census Bureau, OnTheMap Application and Longitudinal Employer-Household Dynamics program.

Where Workers Live in Dixie County



Source: U.S. Census Bureau, OnTheMap Application and Longitudinal Employer-Household Dynamics program.

Map Legend

Job Density [Jobs/Sq. Mile]

- 5 - 42
- 43 - 154
- 155 - 341
- 342 - 602
- 603 - 939

Job Count [Jobs/Census Block]

- 1 - 3
- 4 - 24
- 25 - 80
- 81 - 188
- 189 - 367

Home Area Profile Summary

	Count	Share
Total Primary Jobs	4,539	100.0%
Jobs by Worker Age		
Age 29 or younger	1,099	24.2%
Age 30 to 54	2,336	51.5%
Age 55 or older	1,104	24.3%
Jobs by Earnings		
\$1,250 per month or less	1,053	23.2%
\$1,251 to \$3,333 per month	2,092	46.1%
More than \$3,333 per month	1,394	30.7%
Jobs by NAICS Industry Sector		
Agriculture, Forestry, Fishing and Hunting	180	4.0%
Mining, Quarrying, and Oil and Gas Extraction	5	0.1%
Utilities	30	0.7%
Construction	340	7.5%
Manufacturing	433	9.5%
Wholesale Trade	134	3.0%
Retail Trade	605	13.3%
Transportation and Warehousing	147	3.2%
Information	28	0.6%
Finance and Insurance	83	1.8%
Real Estate and Rental and Leasing	42	0.9%
Professional, Scientific, and Technical Services	163	3.6%
Management of Companies and Enterprises	17	0.4%
Administration & Support, Waste Management and Remediation	172	3.8%
Educational Services	463	10.2%
Health Care and Social Assistance	511	11.3%
Arts, Entertainment, and Recreation	52	1.1%
Accommodation and Food Services	407	9.0%
Other Services (excluding Public Administration)	123	2.7%
Public Administration	604	13.3%

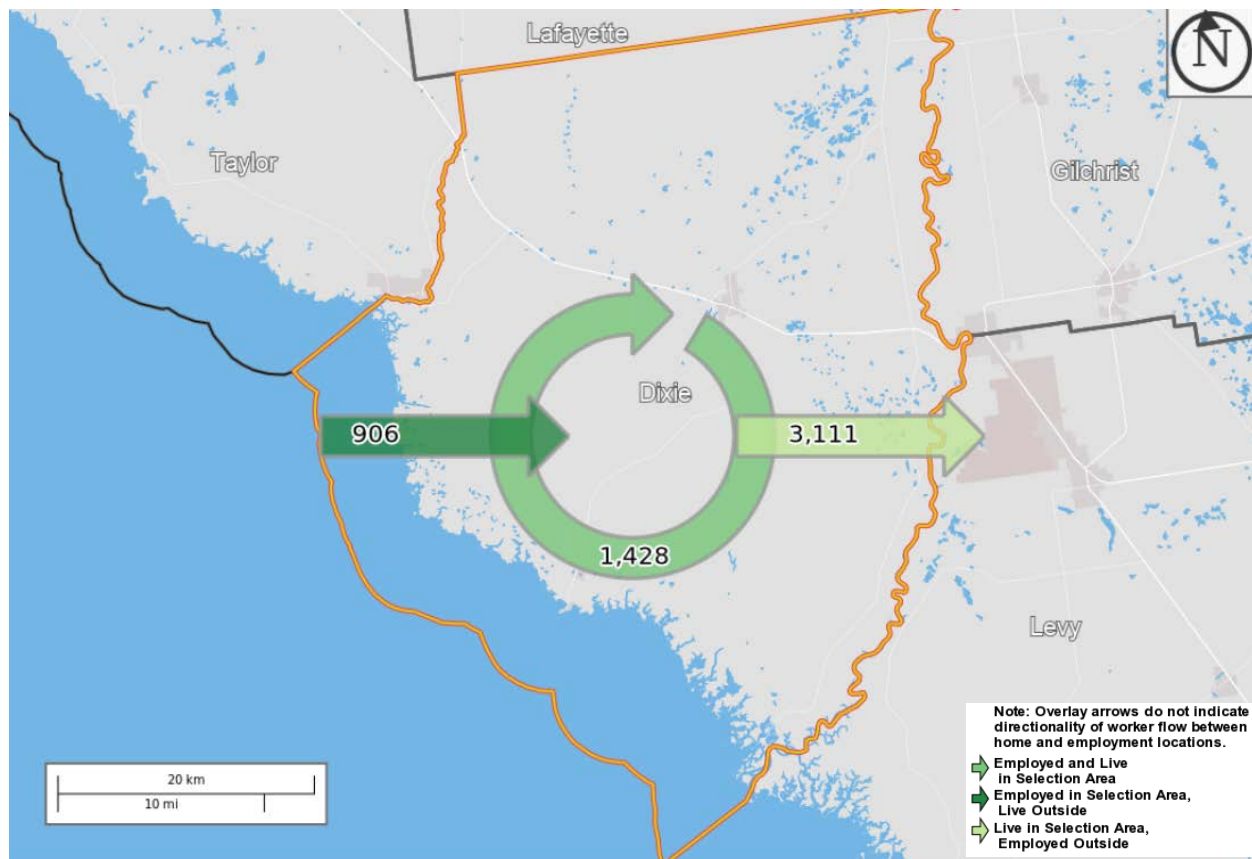
Source: U.S. Census Bureau, OnTheMap Application and Longitudinal Employer-Household Dynamics program.

Home Area Profile Summary - Demographics

	Count	Share
Jobs by Worker Race		
White Alone	3,988	87.9%
Black or African American Alone	426	9.4%
American Indian or Alaska Native Alone	25	0.6%
Asian Alone	43	0.9%
Native Hawaiian or Other Pacific Islander Alone	4	0.1%
Two or More Race Groups	53	1.2%
Jobs by Worker Ethnicity		
Not Hispanic or Latino	4,326	95.3%
Hispanic or Latino	213	4.7%
Jobs by Worker Educational Attainment		
Less than high school	468	10.3%
High school or equivalent, no college	1,086	23.9%
Some college or Associate degree	1,131	24.9%
Bachelor's degree or advanced degree	755	16.6%
Educational attainment not available (workers aged 29 or younger)	1,099	24.2%
Jobs by Worker Sex		
Male	2,333	51.4%
Female	2,206	48.6%

Source: U.S. Census Bureau, OnTheMap Application and Longitudinal Employer-Household Dynamics program.

Labor Inflow/Outflow Map



Source: U.S. Census Bureau, OnTheMap Application and Longitudinal Employer-Household Dynamics program.

Of the 2,334 people who are employed in Dixie County, 1,428 (61.2%) live and work in the county. There are 906 (38.8%) workers who live outside Dixie County and work within the county. Of the 4,539 workers who live within Dixie County, 3,111 (68.5%) residents work outside the county. There is a net outflow of -2,205 workers from Dixie County.

Labor Inflow/Outflow Summary

	Count	Share
Dixie County Labor Market Size (Primary Jobs)		
Employed in the Selection Area	2,334	100.0%
Living in the Selection Area	4,539	194.5%
Net Job Inflow (+) or Outflow (-)	-2,205	-
Dixie County Labor Force Efficiency (Primary Jobs)		
Living in the Selection Area	4,539	100.0%
Living and Employed in the Selection Area	1,428	31.5%
Living in the Selection Area but Employed Outside	3,111	68.5%
Dixie County Employment Efficiency (Primary Jobs)		
Employed in the Selection Area	2,334	100.0%
Employed and Living in the Selection Area	1,428	61.2%
Employed in the Selection Area but Living Outside	906	38.8%
Outflow Job Characteristics		
External Jobs Filled by Residents	3,111	100.0%
Workers Aged 29 or younger	851	27.4%
Workers Aged 30 to 54	1,543	49.6%
Workers Aged 55 or older	717	23.0%
Workers Earning \$1,250 per month or less	699	22.5%
Workers Earning \$1,251 to \$3,333 per month	1,388	44.6%
Workers Earning More than \$3,333 per month	1,024	32.9%
Workers in the "Goods Producing" Industry Class	584	18.8%
Workers in the "Trade, Transportation, and Utilities" Industry Class	772	24.8%
Workers in the "All Other Services" Industry Class	1,755	56.4%

Source: U.S. Census Bureau, OnTheMap Application and Longitudinal Employer-Household Dynamics program.

Labor Inflow/Outflow Summary (continued)

	Count	Share
Inflow Job Characteristics (Primary Jobs)		
Internal Jobs Filled by Outside Workers	906	100.0%
Workers Aged 29 or younger	192	21.2%
Workers Aged 30 to 54	475	52.4%
Workers Aged 55 or older	239	26.4%
Workers Earning \$1,250 per month or less	223	24.6%
Workers Earning \$1,251 to \$3,333 per month	349	38.5%
Workers Earning More than \$3,333 per month	334	36.9%
Workers in the "Goods Producing" Industry Class	258	28.5%
Workers in the "Trade, Transportation, and Utilities" Industry Class	207	22.8%
Workers in the "All Other Services" Industry Class	441	48.7%
Interior Flow Job Characteristics (Primary Jobs)		
Internal Jobs Filled by Residents	1,428	100.0%
Workers Aged 29 or younger	248	17.4%
Workers Aged 30 to 54	793	55.5%
Workers Aged 55 or older	387	27.1%
Workers Earning \$1,250 per month or less	354	24.8%
Workers Earning \$1,251 to \$3,333 per month	704	49.3%
Workers Earning More than \$3,333 per month	370	25.9%
Workers in the "Goods Producing" Industry Class	374	26.2%
Workers in the "Trade, Transportation, and Utilities" Industry Class	144	10.1%
Workers in the "All Other Services" Industry Class	910	63.7%

Source: U.S. Census Bureau, OnTheMap Application and Longitudinal Employer-Household Dynamics program.

Work Destination Summary

Where Workers are Employed Who Live in Dixie County

	Count	Share
Total Primary Jobs	4,539	100.0%
Job Counts by Counties Where Workers are Employed - Primary Jobs		
Dixie County, FL	1,428	31.5%
Alachua County, FL	538	11.9%
Levy County, FL	311	6.9%
Gilchrist County, FL	255	5.6%
Duval County, FL	229	5.0%
Marion County, FL	153	3.4%
Columbia County, FL	147	3.2%
Orange County, FL	132	2.9%
Hillsborough County, FL	130	2.9%
Suwannee County, FL	86	1.9%
Taylor County, FL	85	1.9%
Leon County, FL	71	1.6%
Pinellas County, FL	66	1.5%
Polk County, FL	60	1.3%
Citrus County, FL	56	1.2%
Clay County, FL	55	1.2%
Volusia County, FL	50	1.1%
Broward County, FL	39	0.9%
Lake County, FL	37	0.8%
Miami-Dade County, FL	36	0.8%
Putnam County, FL	28	0.6%
Palm Beach County, FL	27	0.6%
Pasco County, FL	26	0.6%
Brevard County, FL	23	0.5%
Sarasota County, FL	23	0.5%
All Other Locations	448	9.9%

Source: U.S. Census Bureau, OnTheMap Application and Longitudinal Employer-Household Dynamics program.

Home Destination Summary

Where Workers Live Who are Employed in Dixie County

	Count	Share
Total Primary Jobs	2,334	100.0%
Job Counts by Counties Where Workers Live - Primary Jobs		
Dixie County, FL	1,428	61.2%
Levy County, FL	155	6.6%
Gilchrist County, FL	139	6.0%
Alachua County, FL	66	2.8%
Columbia County, FL	44	1.9%
Taylor County, FL	42	1.8%
Lafayette County, FL	32	1.4%
Duval County, FL	28	1.2%
Leon County, FL	26	1.1%
Citrus County, FL	25	1.1%
Suwannee County, FL	25	1.1%
Hillsborough County, FL	21	0.9%
Hamilton County, FL	17	0.7%
Volusia County, FL	16	0.7%
Madison County, FL	14	0.6%
Pasco County, FL	14	0.6%
Franklin County, FL	12	0.5%
Orange County, FL	12	0.5%
Pinellas County, FL	12	0.5%
Bradford County, FL	11	0.5%
Marion County, FL	11	0.5%
Okaloosa County, FL	11	0.5%
Baker County, FL	10	0.4%
Union County, FL	9	0.4%
Wakulla County, FL	9	0.4%
All Other Locations	145	6.2%

Source: U.S. Census Bureau, OnTheMap Application and Longitudinal Employer-Household Dynamics program.

**Florida Department of Economic Opportunity
Bureau of Workforce Statistics and Economic Research
(WSER)**

**Caldwell Building
MSC G-020
107 E. Madison Street
Tallahassee, Florida 32399-4111
Phone (850) 245-7257**



www.floridajobs.org/labor-market-information