

Summary of Employment, Demographics, and Commuting Patterns for Columbia County, Florida



May 2021

Contents

Labor Shed Analysis	3
OnTheMap, Census Bureau	3
Florida Department of Economic Opportunity, Bureau of Workforce Statistics and Economic Research (WSER)	3
Executive Summary	4
People QuickFacts.....	5
Business and Geography QuickFacts.....	7
Labor Force, Employment, and Unemployment	7
Population	7
Where Workers Work in Columbia County	8
Work Area Profile Summary	9
Work Area Profile Summary - Demographics	10
Where Workers Live in Columbia County	11
Home Area Profile Summary	12
Home Area Profile Summary - Demographics.....	13
Labor Inflow/Outflow Map	14
Labor Inflow/Outflow Summary	15
Work Destination Summary	17
Home Destination Summary	18

Labor Shed Analysis

A labor shed analysis is defined as where workers work and where workers live relative to a user-defined selection area. This analysis helps to determine where a labor market draws its commuting workers. Labor shed studies can draw comparisons between various geographies including state, Congressional District, Metropolitan Statistical Area (MSA), county, Workforce Investment Area (WIA), Zip Code, and Census tract. By indicating how many of the selection area workers work outside the area, labor sheds can help identify potential pools of workers who would be available for work in the user-defined area.

Labor shed studies provide economic developers and existing or prospective employers a tool to understand the local labor market and make informed expansion and site selection decisions. In addition, labor shed studies can help indicate potential impacts from environmental, social, or economic incidents.

OnTheMap, Census Bureau

OnTheMap is a mapping and reporting tool developed by the U.S. Census Bureau showing employment and home locations of workers with companion reports for user-defined areas. It is the first synthetic data product released by the Census Bureau. OnTheMap is an important tool for Florida to perform labor inflow/outflow analyses and provide commuting data to planning and economic development agencies as well as Regional Workforce Boards. OnTheMap data is also used by the Department of Economic Opportunity to help quantify natural disaster impacts for emergency management agencies based on where workers live and where they work.

OnTheMap integrates existing data from state-supplied administrative records on workers and employers with existing federal censuses, surveys, and other administrative records. The state Labor Market Information (LMI) agencies supply key data from unemployment wage records and from businesses each quarter. The Census Bureau merges the state-supplied data with current demographic information to produce the data found in OnTheMap. By combining data from different administrative sources, censuses, and surveys, the Census Bureau produces local employment information that was not previously available.

Florida Department of Economic Opportunity, Bureau of Workforce Statistics and Economic Research (WSER)

The Florida Department of Economic Opportunity, Bureau of Workforce Statistics and Economic Research (WSER), produces, analyzes, and distributes labor statistics to improve economic decision making. These data are produced as part of the federal/state cooperative statistical program with the U.S. Department of Labor, Bureau of Labor Statistics, and the Employment and Training Administration.

Executive Summary

The analysis of workforce and demographic characteristics, including commuting patterns of Columbia County was conducted to provide economic data on the population and labor force living or working in the county. The report is useful for detailing where workers work and live in order to align resources. This report includes population, labor force, and demographics for Columbia County.

Workers employed in Columbia County are clustered in the Health Care and Social Assistance (17.9%) and Retail Trade (12.2%) industries. Workers living in Columbia County are concentrated in the Health Care and Social Assistance (16.7%) and Retail Trade (13.0%) industries.

A detailed examination of commuting patterns for Columbia County shows that the county has a net outflow of -1,991 workers. Using the latest annual Census data available, there were 23,340 workers employed in Columbia County and 25,331 workers living in Columbia County. Of the workers who lived in the county, 14,070 workers (55.5%) were employed outside the county.

With 55.5% of workers who reside in Columbia County employed outside the county, Columbia County was ranked 27th of 67 for the lowest outflow rankings among Florida counties. Leon (20.9%) had the lowest outflow rate, followed by Miami-Dade (22.0%) and Duval (25.5%). Glades (85.1%), Jefferson (82.2%), and Union (79.6%) had the highest worker outflow rates.

Of the 14,070 Columbia County workers employed outside the county, the top destination counties are Alachua County (3,757 workers), Duval County (2,784 workers), and Suwannee County (841 workers). Of the 12,079 Columbia County workers living outside the county, the top origin counties are Suwannee County (2,026 workers), Alachua County (984 workers), and Duval County (954 workers).

People QuickFacts

	Columbia County	Florida	United States
Population			
Population estimates, July 1, 2019, (V2019)	71,686	21,477,737	328,239,523
Population estimates base, April 1, 2010, (V2019)	67,526	18,804,564	308,758,105
Population, percent change - April 1, 2010 (estimates base) to July 1, 2019, (V2019)	6.2%	14.2%	6.3%
Population, Census, April 1, 2010	67,531	18,801,310	308,745,538
Population, Census, April 1, 2020	X	21,538,187	331,449,281
Age and Sex			
Persons under 5 years, percent	5.8%	5.3%	6.0%
Persons under 18 years, percent	21.5%	19.7%	22.3%
Persons 65 years and over, percent	19.3%	20.9%	16.5%
Female persons, percent	48.2%	51.1%	50.8%
Race and Hispanic Origin			
White alone, percent	77.7%	77.3%	76.3%
Black or African American alone, percent(a)	18.7%	16.9%	13.4%
American Indian and Alaska Native alone, percent(a)	0.6%	0.5%	1.3%
Asian alone, percent(a)	1.0%	3.0%	5.9%
Native Hawaiian and Other Pacific Islander alone, percent(a)	0.1%	0.1%	0.2%
Two or More Races, percent	1.9%	2.2%	2.8%
Hispanic or Latino, percent(b)	6.7%	26.4%	18.5%
White alone, not Hispanic or Latino, percent	71.8%	53.2%	60.1%
Population Characteristics			
Veterans, 2015-2019	7,137	1,440,338	18,230,322
Foreign born persons, percent, 2015-2019	3.9%	20.7%	13.6%
Housing			
Housing units, July 1, 2019, (V2019)	29,300	9,673,682	139,684,244
Owner-occupied housing unit rate, 2015-2019	71.4%	65.4%	64.0%
Median value of owner-occupied housing units, 2015-2019	\$124,200	\$215,300	\$217,500
Median selected monthly owner costs -with a mortgage, 2015-2019	\$1,100	\$1,503	\$1,595
Median selected monthly owner costs -without a mortgage, 2015-2019	\$344	\$505	\$500
Median gross rent, 2015-2019	\$829	\$1,175	\$1,062
Building permits, 2020	194	164,074	1,471,141

Legend

The vintage year (e.g., V2019) refers to the final year of the series (2010 thru 2019). Different vintage years of estimates are not comparable.

Fact Notes

(a) Includes persons reporting only one race

(b) Hispanics may be of any race, so also are included in applicable race categories

Source: U.S. Census Bureau, State & County QuickFacts.

People QuickFacts (continued)

	Columbia County	Florida	United States
Families & Living Arrangements			
Households, 2015-2019	25,133	7,736,311	120,756,048
Persons per household, 2015-2019	2.59	2.65	2.62
Living in same house 1 year ago, percent of persons age 1 year+, 2015-2019	81.1%	84.5%	85.8%
Language other than English spoken at home, percent of persons age 5 years+, 2015-2019	6.8%	29.4%	21.6%
Computer and Internet Use			
Households with a computer, percent, 2015-2019	90.5%	91.5%	90.3%
Households with a broadband Internet subscription, percent, 2015-2019	78.6%	83.0%	82.7%
Education			
High school graduate or higher, percent of persons age 25 years+, 2015-2019	86.1%	88.2%	88.0%
Bachelor's degree or higher, percent of persons age 25 years+, 2015-2019	14.9%	29.9%	32.1%
Health			
With a disability, under age 65 years, percent, 2015-2019	14.2%	8.6%	8.6%
Persons without health insurance, under age 65 years, percent	13.2%	16.3%	9.5%
Economy			
In civilian labor force, total, percent of population age 16 years+, 2015-2019	51.4%	58.5%	63.0%
In civilian labor force, female, percent of population age 16 years+, 2015-2019	51.6%	54.3%	58.3%
Total accommodation and food services sales, 2012 (\$1,000)(c)	106,605	49,817,925	708,138,598
Total health care and social assistance receipts/revenue, 2012 (\$1,000)(c)	567,341	124,061,425	2,040,441,203
Total manufacturers shipments, 2012 (\$1,000)(c)	249,044	96,924,106	5,696,729,632
Total merchant wholesaler sales, 2012 (\$1,000)(c)	508,578	252,626,608	5,208,023,478
Total retail sales, 2012 (\$1,000)(c)	815,928	273,867,145	4,219,821,871
Total retail sales per capita, 2012(c)	\$12,005	\$14,177	\$13,443
Transportation			
Mean travel time to work (minutes), workers age 16 years+, 2015-2019	24.8	27.8	26.9
Income & Poverty			
Median household income (in 2019 dollars), 2015-2019	\$46,494	\$55,660	\$62,843
Per capita income in past 12 months (in 2019 dollars), 2015-2019	\$24,275	\$31,619	\$34,103
Persons in poverty, percent	15.6%	12.7%	10.5%

Legend

The vintage year (e.g., V2019) refers to the final year of the series (2010 thru 2019). Different vintage years of estimates are not comparable.

Fact Notes

(c) Economic Census - Puerto Rico data are not comparable to U.S. Economic Census data

Source: U.S. Census Bureau, State & County QuickFacts.

Business and Geography QuickFacts

	Columbia County	Florida	United States
Businesses			
Total employer establishments, 2019	1,403	574,51	7,959,103
Total employment, 2019	19,182	8,860,04	132,989,428
Total annual payroll, 2019 (\$1,000)	782,557	426,908,31	7,428,553,593
Total employment, percent change, 2018-2019	-0.3%	2.2%	1.6%
Total nonemployer establishments, 2018	4,267	2,388,050	26,485,532
All firms, 2012	4,574	2,100,187	27,626,360
Men-owned firms, 2012	2,473	1,084,885	14,844,597
Women-owned firms, 2012	1,436	807,817	9,878,397
Minority-owned firms, 2012	640	926,112	7,952,386
Nonminority-owned firms, 2012	3,659	1,121,749	18,987,918
Veteran-owned firms, 2012	537	185,756	2,521,682
Nonveteran-owned firms, 2012	3,707	1,846,686	24,070,685
Geography			
Population per square mile, 2010	84.7	350.6	87.4
Land area in square miles, 2010	797.57	53,624.76	3,531,905.43
FIPS Code	12023	12	1

Source: U.S. Census Bureau, State & County QuickFacts.

Labor Force, Employment, and Unemployment

	April 2021				April 2020			
	LABOR	EMPLOY-	UNEMPLOYMENT		LABOR	EMPLOY-	UNEMPLOYMENT	
	FORCE	MENT	LEVEL	RATE (%)	FORCE	MENT	LEVEL	RATE (%)
Workforce Region 07	48,725	46,456	2,269	4.7	44,343	40,486	3,857	8.7
Columbia County	30,369	28,883	1,486	4.9	27,692	25,033	2,659	9.6
Dixie County	6,295	5,998	297	4.7	5,524	5,123	401	7.3
Gilchrist County	7,422	7,129	293	3.9	6,586	6,094	492	7.5
Union County	4,639	4,446	193	4.2	4,541	4,236	305	6.7
Florida	10,357,000	9,825,000	532,000	5.1	9,718,000	8,369,000	1,349,000	13.9
United States	160,379,000	151,160,000	9,220,000	5.7	155,830,000	133,326,000	22,504,000	14.4

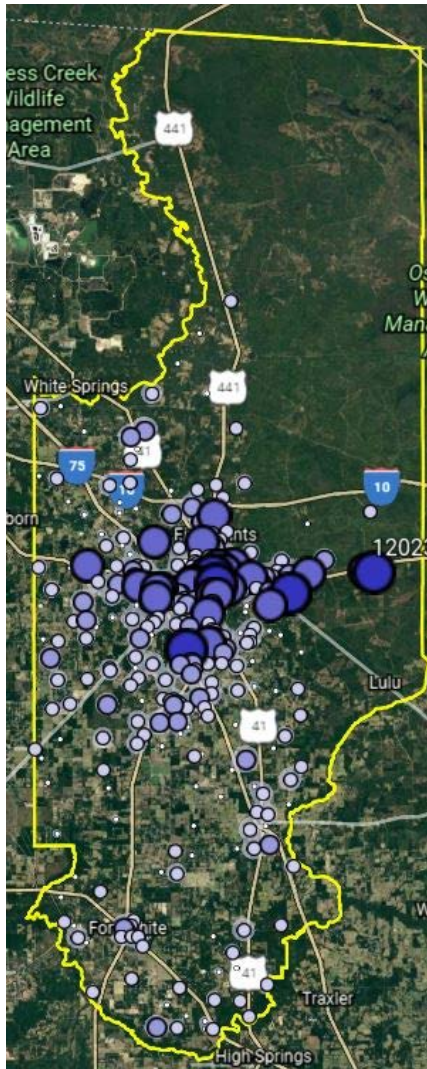
Source: U.S. Department of Labor, Bureau of Labor Statistics, Local Area Unemployment Statistics.

Population

	Population Estimate (as of July 1)							
	2012	2013	2014	2015	2016	2017	2018	2019
Workforce Region 07	116,189	115,618	116,069	117,218	118,590	119,962	120,965	122,331
Columbia County	67,884	67,417	67,779	68,222	69,265	69,999	70,668	71,686
Dixie County	16,153	16,084	16,041	16,353	16,465	16,615	16,685	16,826
Gilchrist County	16,897	16,957	16,991	17,378	17,622	17,900	18,284	18,582
Union County	15,255	15,160	15,258	15,265	15,238	15,448	15,328	15,237
Florida	19,297,822	19,545,621	19,845,911	20,209,042	20,613,477	20,963,613	21,244,317	21,477,737
United States	313,830,990	315,993,715	318,301,008	320,635,163	322,941,311	324,985,539	326,687,501	328,239,523

Source: U.S. Census Bureau, Population Division.

Where Workers Work in Columbia County



Source: U.S. Census Bureau, OnTheMap Application and Longitudinal Employer-Household Dynamics program.

Map Legend

Job Density [Jobs/Sq. Mile]

- 5 - 282
- 283 - 1,116
- 1,117 - 2,504
- 2,505 - 4,449
- 4,450 - 6,949

Job Count [Jobs/Census Block]

- 1 - 3
- 4 - 33
- 34 - 166
- 167 - 523
- 524 - 1,277

Work Area Profile Summary

	Count	Share
Total Primary Jobs	23,340	100.0%
Jobs by Worker Age		
Age 29 or younger	5,444	23.3%
Age 30 to 54	12,416	53.2%
Age 55 or older	5,480	23.5%
Jobs by Earnings		
\$1,250 per month or less	5,154	22.1%
\$1,251 to \$3,333 per month	10,164	43.5%
More than \$3,333 per month	8,022	34.4%
Jobs by NAICS Industry Sector		
Agriculture, Forestry, Fishing and Hunting	152	0.7%
Mining, Quarrying, and Oil and Gas Extraction	0	0.0%
Utilities	64	0.3%
Construction	1,398	6.0%
Manufacturing	2,097	9.0%
Wholesale Trade	907	3.9%
Retail Trade	2,840	12.2%
Transportation and Warehousing	634	2.7%
Information	86	0.4%
Finance and Insurance	441	1.9%
Real Estate and Rental and Leasing	150	0.6%
Professional, Scientific, and Technical Services	639	2.7%
Management of Companies and Enterprises	233	1.0%
Administration & Support, Waste Management and Remediation	1,986	8.5%
Educational Services	1,702	7.3%
Health Care and Social Assistance	4,185	17.9%
Arts, Entertainment, and Recreation	92	0.4%
Accommodation and Food Services	2,801	12.0%
Other Services (excluding Public Administration)	460	2.0%
Public Administration	2,473	10.6%

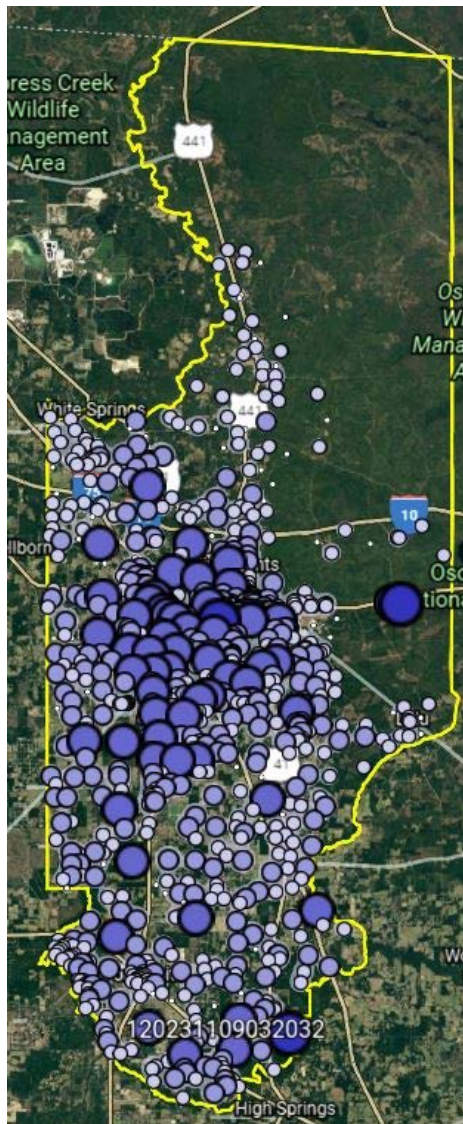
Source: U.S. Census Bureau, OnTheMap Application and Longitudinal Employer-Household Dynamics program.

Work Area Profile Summary - Demographics

	Count	Share
Jobs by Worker Race		
White Alone	18,141	77.7%
Black or African American Alone	4,311	18.5%
American Indian or Alaska Native Alone	98	0.4%
Asian Alone	453	1.9%
Native Hawaiian or Other Pacific Islander Alone	15	0.1%
Two or More Race Groups	322	1.4%
Jobs by Worker Ethnicity		
Not Hispanic or Latino	21,718	93.1%
Hispanic or Latino	1,622	6.9%
Jobs by Worker Educational Attainment		
Less than high school	2,443	10.5%
High school or equivalent, no college	5,567	23.9%
Some college or Associate degree	6,241	26.7%
Bachelor's degree or advanced degree	3,645	15.6%
Educational attainment not available (workers aged 29 or younger)	5,444	23.3%
Jobs by Worker Sex		
Male	11,399	48.8%
Female	11,941	51.2%

Source: U.S. Census Bureau, OnTheMap Application and Longitudinal Employer-Household Dynamics program.

Where Workers Live in Columbia County



Source: U.S. Census Bureau, OnTheMap Application and Longitudinal Employer-Household Dynamics program.

Map Legend

Job Density [Jobs/Sq. Mile]

- 5 - 72
- 73 - 275
- 276 - 613
- 614 - 1,086
- 1,087 - 1,695

Job Count [Jobs/Census Block]

- 1 - 2
- 3 - 17
- 18 - 84
- 85 - 263
- 264 - 642

Home Area Profile Summary

	Count	Share
Total Primary Jobs	25,331	100.0%
Jobs by Worker Age		
Age 29 or younger	6,004	23.7%
Age 30 to 54	13,476	53.2%
Age 55 or older	5,851	23.1%
Jobs by Earnings		
\$1,250 per month or less	5,273	20.8%
\$1,251 to \$3,333 per month	10,869	42.9%
More than \$3,333 per month	9,189	36.3%
Jobs by NAICS Industry Sector		
Agriculture, Forestry, Fishing and Hunting	348	1.4%
Mining, Quarrying, and Oil and Gas Extraction	18	0.1%
Utilities	121	0.5%
Construction	1,741	6.9%
Manufacturing	2,097	8.3%
Wholesale Trade	928	3.7%
Retail Trade	3,296	13.0%
Transportation and Warehousing	947	3.7%
Information	224	0.9%
Finance and Insurance	663	2.6%
Real Estate and Rental and Leasing	256	1.0%
Professional, Scientific, and Technical Services	998	3.9%
Management of Companies and Enterprises	198	0.8%
Administration & Support, Waste Management and Remediation	1,706	6.7%
Educational Services	1,945	7.7%
Health Care and Social Assistance	4,241	16.7%
Arts, Entertainment, and Recreation	263	1.0%
Accommodation and Food Services	2,670	10.5%
Other Services (excluding Public Administration)	547	2.2%
Public Administration	2,124	8.4%

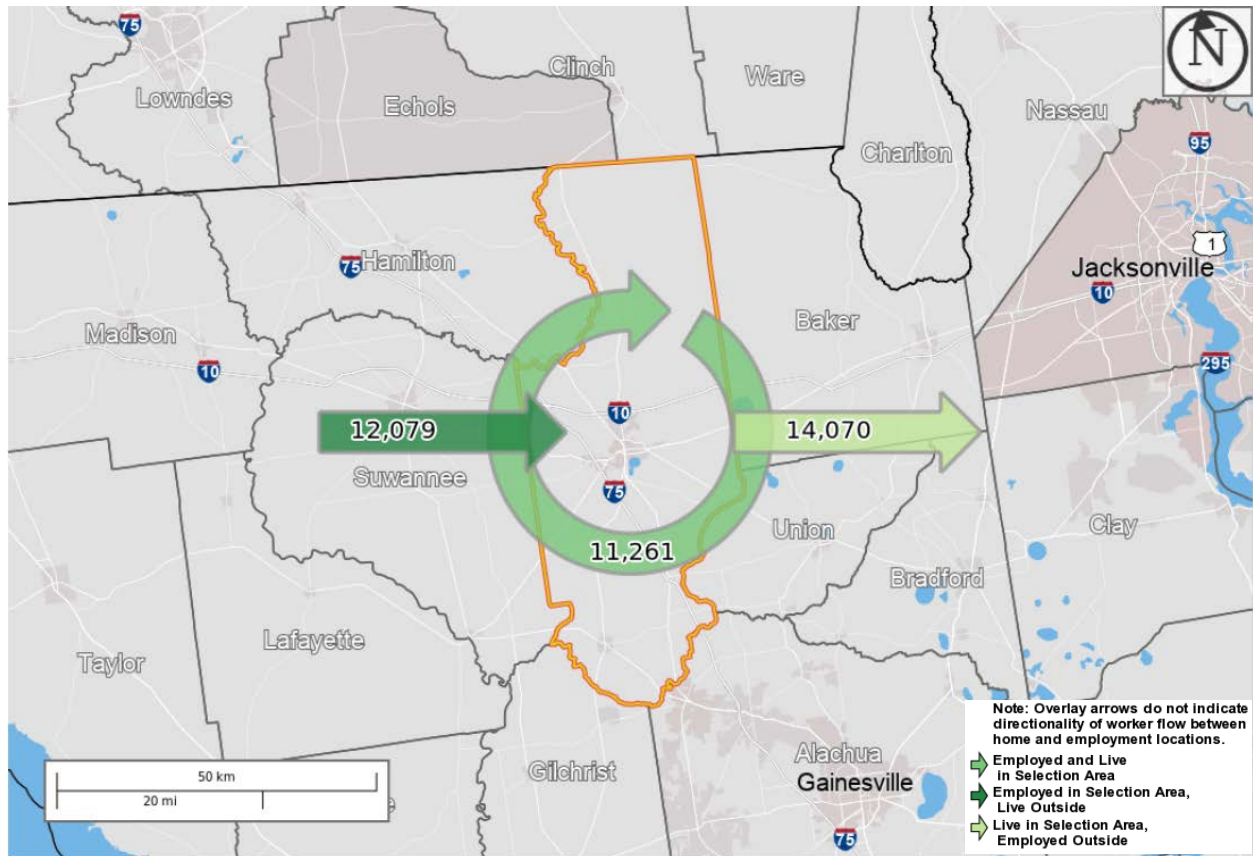
Source: U.S. Census Bureau, OnTheMap Application and Longitudinal Employer-Household Dynamics program.

Home Area Profile Summary - Demographics

	Count	Share
Jobs by Worker Race		
White Alone	20,242	79.9%
Black or African American Alone	4,225	16.7%
American Indian or Alaska Native Alone	109	0.4%
Asian Alone	401	1.6%
Native Hawaiian or Other Pacific Islander Alone	23	0.1%
Two or More Race Groups	331	1.3%
Jobs by Worker Ethnicity		
Not Hispanic or Latino	23,912	94.4%
Hispanic or Latino	1,419	5.6%
Jobs by Worker Educational Attainment		
Less than high school	2,500	9.9%
High school or equivalent, no college	5,977	23.6%
Some college or Associate degree	6,539	25.8%
Bachelor's degree or advanced degree	4,311	17.0%
Educational attainment not available (workers aged 29 or younger)	6,004	23.7%
Jobs by Worker Sex		
Male	12,691	50.1%
Female	12,640	49.9%

Source: U.S. Census Bureau, OnTheMap Application and Longitudinal Employer-Household Dynamics program.

Labor Inflow/Outflow Map



Source: U.S. Census Bureau, OnTheMap Application and Longitudinal Employer-Household Dynamics program.

Of the 23,340 people who are employed in Columbia County, 11,261 (48.2%) live and work in the county. There are 12,079 (51.8%) workers who live outside Columbia County and work within the county. Of the 25,331 workers who live within Columbia County, 14,070 (55.5%) residents work outside the county. There is a net outflow of -1,991 workers from Columbia County.

Labor Inflow/Outflow Summary

	Count	Share
Columbia County Labor Market Size (Primary Jobs)		
Employed in the Selection Area	23,340	100.0%
Living in the Selection Area	25,331	108.5%
Net Job Inflow (+) or Outflow (-)	-1,991	-
Columbia County Labor Force Efficiency (Primary Jobs)		
Living in the Selection Area	25,331	100.0%
Living and Employed in the Selection Area	11,261	44.5%
Living in the Selection Area but Employed Outside	14,070	55.5%
Columbia County Employment Efficiency (Primary Jobs)		
Employed in the Selection Area	23,340	100.0%
Employed and Living in the Selection Area	11,261	48.2%
Employed in the Selection Area but Living Outside	12,079	51.8%
Outflow Job Characteristics		
External Jobs Filled by Residents	14,070	100.0%
Workers Aged 29 or younger	3,619	25.7%
Workers Aged 30 to 54	7,306	51.9%
Workers Aged 55 or older	3,145	22.4%
Workers Earning \$1,250 per month or less	2,898	20.6%
Workers Earning \$1,251 to \$3,333 per month	5,865	41.7%
Workers Earning More than \$3,333 per month	5,307	37.7%
Workers in the "Goods Producing" Industry Class	2,254	16.0%
Workers in the "Trade, Transportation, and Utilities" Industry Class	3,732	26.5%
Workers in the "All Other Services" Industry Class	8,084	57.5%

Source: U.S. Census Bureau, OnTheMap Application and Longitudinal Employer-Household Dynamics program.

Labor Inflow/Outflow Summary (continued)

	Count	Share
Inflow Job Characteristics (Primary Jobs)		
Internal Jobs Filled by Outside Workers	12,079	100.0%
Workers Aged 29 or younger	3,059	25.3%
Workers Aged 30 to 54	6,246	51.7%
Workers Aged 55 or older	2,774	23.0%
Workers Earning \$1,250 per month or less	2,779	23.0%
Workers Earning \$1,251 to \$3,333 per month	5,160	42.7%
Workers Earning More than \$3,333 per month	4,140	34.3%
Workers in the "Goods Producing" Industry Class	1,697	14.0%
Workers in the "Trade, Transportation, and Utilities" Industry Class	2,885	23.9%
Workers in the "All Other Services" Industry Class	7,497	62.1%
Interior Flow Job Characteristics (Primary Jobs)		
Internal Jobs Filled by Residents	11,261	100.0%
Workers Aged 29 or younger	2,385	21.2%
Workers Aged 30 to 54	6,170	54.8%
Workers Aged 55 or older	2,706	24.0%
Workers Earning \$1,250 per month or less	2,375	21.1%
Workers Earning \$1,251 to \$3,333 per month	5,004	44.4%
Workers Earning More than \$3,333 per month	3,882	34.5%
Workers in the "Goods Producing" Industry Class	1,950	17.3%
Workers in the "Trade, Transportation, and Utilities" Industry Class	1,560	13.9%
Workers in the "All Other Services" Industry Class	7,751	68.8%

Source: U.S. Census Bureau, OnTheMap Application and Longitudinal Employer-Household Dynamics program.

Work Destination Summary

Where Workers are Employed Who Live in Columbia County

	Count	Share
Total Primary Jobs	25,331	100.0%
Job Counts by Counties Where Workers are Employed - Primary Jobs		
Columbia County, FL	11,261	44.5%
Alachua County, FL	3,757	14.8%
Duval County, FL	2,784	11.0%
Suwannee County, FL	841	3.3%
Orange County, FL	580	2.3%
Hillsborough County, FL	460	1.8%
Clay County, FL	421	1.7%
Hamilton County, FL	350	1.4%
Leon County, FL	329	1.3%
Marion County, FL	300	1.2%
Pinellas County, FL	285	1.1%
St. Johns County, FL	252	1.0%
Baker County, FL	223	0.9%
Volusia County, FL	213	0.8%
Union County, FL	199	0.8%
Polk County, FL	172	0.7%
Bradford County, FL	159	0.6%
Putnam County, FL	151	0.6%
Seminole County, FL	148	0.6%
Lake County, FL	145	0.6%
Miami-Dade County, FL	134	0.5%
Pasco County, FL	133	0.5%
Broward County, FL	120	0.5%
Gilchrist County, FL	115	0.5%
Levy County, FL	107	0.4%
All Other Locations	1,692	6.7%

Source: U.S. Census Bureau, OnTheMap Application and Longitudinal Employer-Household Dynamics program.

Home Destination Summary

Where Workers Live Who are Employed in Columbia County

	Count	Share
Total Primary Jobs	23,340	100.0%
Job Counts by Counties Where Workers Live - Primary Jobs		
Columbia County, FL	11,261	48.2%
Suwannee County, FL	2,026	8.7%
Alachua County, FL	984	4.2%
Duval County, FL	954	4.1%
Union County, FL	513	2.2%
Marion County, FL	481	2.1%
Hamilton County, FL	427	1.8%
Baker County, FL	419	1.8%
Orange County, FL	347	1.5%
Hillsborough County, FL	286	1.2%
Volusia County, FL	284	1.2%
Clay County, FL	270	1.2%
Gilchrist County, FL	269	1.2%
Bradford County, FL	266	1.1%
Leon County, FL	257	1.1%
Levy County, FL	235	1.0%
St. Johns County, FL	213	0.9%
Polk County, FL	212	0.9%
Citrus County, FL	170	0.7%
Lafayette County, FL	157	0.7%
Pasco County, FL	157	0.7%
Lowndes County, GA	153	0.7%
Dixie County, FL	147	0.6%
Pinellas County, FL	143	0.6%
Miami-Dade County, FL	135	0.6%
All Other Locations	2,574	11.0%

Source: U.S. Census Bureau, OnTheMap Application and Longitudinal Employer-Household Dynamics program.

**Florida Department of Economic Opportunity
Bureau of Workforce Statistics and Economic Research
(WSER)**

**Caldwell Building
MSC G-020
107 E. Madison Street
Tallahassee, Florida 32399-4111
Phone (850) 245-7257**



www.floridajobs.org/labor-market-information