

Summary of Employment, Demographics, and Commuting Patterns for Collier County, Florida



May 2021

Contents

Labor Shed Analysis	3
OnTheMap, Census Bureau	3
Florida Department of Economic Opportunity, Bureau of Workforce Statistics and Economic Research (WSER)	3
Executive Summary	4
People QuickFacts.....	5
Business and Geography QuickFacts.....	7
Labor Force, Employment, and Unemployment	7
Population	7
Where Workers Work in Collier County	8
Work Area Profile Summary	9
Work Area Profile Summary - Demographics	10
Where Workers Live in Collier County	11
Home Area Profile Summary	12
Home Area Profile Summary - Demographics	13
Labor Inflow/Outflow Map	14
Labor Inflow/Outflow Summary	15
Work Destination Summary	17
Home Destination Summary	18

Labor Shed Analysis

A labor shed analysis is defined as where workers work and where workers live relative to a user-defined selection area. This analysis helps to determine where a labor market draws its commuting workers. Labor shed studies can draw comparisons between various geographies including state, Congressional District, Metropolitan Statistical Area (MSA), county, Workforce Investment Area (WIA), Zip Code, and Census tract. By indicating how many of the selection area workers work outside the area, labor sheds can help identify potential pools of workers who would be available for work in the user-defined area.

Labor shed studies provide economic developers and existing or prospective employers a tool to understand the local labor market and make informed expansion and site selection decisions. In addition, labor shed studies can help indicate potential impacts from environmental, social, or economic incidents.

OnTheMap, Census Bureau

OnTheMap is a mapping and reporting tool developed by the U.S. Census Bureau showing employment and home locations of workers with companion reports for user-defined areas. It is the first synthetic data product released by the Census Bureau. OnTheMap is an important tool for Florida to perform labor inflow/outflow analyses and provide commuting data to planning and economic development agencies as well as Regional Workforce Boards. OnTheMap data is also used by the Department of Economic Opportunity to help quantify natural disaster impacts for emergency management agencies based on where workers live and where they work.

OnTheMap integrates existing data from state-supplied administrative records on workers and employers with existing federal censuses, surveys, and other administrative records. The state Labor Market Information (LMI) agencies supply key data from unemployment wage records and from businesses each quarter. The Census Bureau merges the state-supplied data with current demographic information to produce the data found in OnTheMap. By combining data from different administrative sources, censuses, and surveys, the Census Bureau produces local employment information that was not previously available.

Florida Department of Economic Opportunity, Bureau of Workforce Statistics and Economic Research (WSER)

The Florida Department of Economic Opportunity, Bureau of Workforce Statistics and Economic Research (WSER), produces, analyzes, and distributes labor statistics to improve economic decision making. These data are produced as part of the federal/state cooperative statistical program with the U.S. Department of Labor, Bureau of Labor Statistics, and the Employment and Training Administration.

Executive Summary

The analysis of workforce and demographic characteristics, including commuting patterns of Collier County was conducted to provide economic data on the population and labor force living or working in the county. The report is useful for detailing where workers work and live in order to align resources. This report includes population, labor force, and demographics for Collier County.

Workers employed in Collier County are clustered in the Accommodation and Food Services (13.7%) and Health Care and Social Assistance (13.6%) industries. Workers living in Collier County are concentrated in the Retail Trade (13.6%) and Accommodation and Food Services (13.5%) industries.

A detailed examination of commuting patterns for Collier County shows that the county has a net inflow of 1,617 workers. Using the latest annual Census data available, there were 133,631 workers employed in Collier County and 132,014 workers living in Collier County. Of the workers who lived in the county, 48,875 workers (37.0%) were employed outside the county.

With 37.0% of workers who reside in Collier County employed outside the county, Collier County was ranked 14th of 67 for the lowest outflow rankings among Florida counties. Leon (20.9%) had the lowest outflow rate, followed by Miami-Dade (22.0%) and Duval (25.5%). Glades (85.1%), Jefferson (82.2%), and Union (79.6%) had the highest worker outflow rates.

Of the 48,875 Collier County workers employed outside the county, the top destination counties are Lee County (16,710 workers), Broward County (4,539 workers), and Miami-Dade County (3,950 workers). Of the 50,492 Collier County workers living outside the county, the top origin counties are Lee County (24,800 workers), Miami-Dade County (3,974 workers), and Broward County (2,845 workers).

People QuickFacts

	Collier County	Florida	United States
Population			
Population estimates, July 1, 2019, (V2019)	384,902	21,477,737	328,239,523
Population estimates base, April 1, 2010, (V2019)	321,522	18,804,564	308,758,105
Population, percent change - April 1, 2010 (estimates base) to July 1, 2019, (V2019)	19.7%	14.2%	6.3%
Population, Census, April 1, 2010	321,520	18,801,310	308,745,538
Population, Census, April 1, 2020	X	21,538,187	331,449,281
Age and Sex			
Persons under 5 years, percent	4.3%	5.3%	6.0%
Persons under 18 years, percent	16.8%	19.7%	22.3%
Persons 65 years and over, percent	32.9%	20.9%	16.5%
Female persons, percent	50.7%	51.1%	50.8%
Race and Hispanic Origin			
White alone, percent	89.3%	77.3%	76.3%
Black or African American alone, percent(a)	7.3%	16.9%	13.4%
American Indian and Alaska Native alone, percent(a)	0.5%	0.5%	1.3%
Asian alone, percent(a)	1.6%	3.0%	5.9%
Native Hawaiian and Other Pacific Islander alone, percent(a)	0.1%	0.1%	0.2%
Two or More Races, percent	1.2%	2.2%	2.8%
Hispanic or Latino, percent(b)	28.6%	26.4%	18.5%
White alone, not Hispanic or Latino, percent	62.2%	53.2%	60.1%
Population Characteristics			
Veterans, 2015-2019	27,416	1,440,338	18,230,322
Foreign born persons, percent, 2015-2019	25.4%	20.7%	13.6%
Housing			
Housing units, July 1, 2019, (V2019)	222,284	9,673,682	139,684,244
Owner-occupied housing unit rate, 2015-2019	73.3%	65.4%	64.0%
Median value of owner-occupied housing units, 2015-2019	\$360,800	\$215,300	\$217,500
Median selected monthly owner costs -with a mortgage, 2015-2019	\$1,869	\$1,503	\$1,595
Median selected monthly owner costs -without a mortgage, 2015-2019	\$754	\$505	\$500
Median gross rent, 2015-2019	\$1,317	\$1,175	\$1,062
Building permits, 2020	4,473	164,074	1,471,141

Legend

The vintage year (e.g., V2019) refers to the final year of the series (2010 thru 2019). Different vintage years of estimates are not comparable.

Fact Notes

(a) Includes persons reporting only one race

(b) Hispanics may be of any race, so also are included in applicable race categories

Source: U.S. Census Bureau, State & County QuickFacts.

People QuickFacts (continued)

	Collier County	Florida	United States
Families & Living Arrangements			
Households, 2015-2019	142,979	7,736,311	120,756,048
Persons per household, 2015-2019	2.57	2.65	2.62
Living in same house 1 year ago, percent of persons age 1 year+, 2015-2019	83.8%	84.5%	85.8%
Language other than English spoken at home, percent of persons age 5 years+, 2015-2019	33.7%	29.4%	21.6%
Computer and Internet Use			
Households with a computer, percent, 2015-2019	93.4%	91.5%	90.3%
Households with a broadband Internet subscription, percent, 2015-2019	85.2%	83.0%	82.7%
Education			
High school graduate or higher, percent of persons age 25 years+, 2015-2019	87.1%	88.2%	88.0%
Bachelor's degree or higher, percent of persons age 25 years+, 2015-2019	36.4%	29.9%	32.1%
Health			
With a disability, under age 65 years, percent, 2015-2019	5.4%	8.6%	8.6%
Persons without health insurance, under age 65 years, percent	22.6%	16.3%	9.5%
Economy			
In civilian labor force, total, percent of population age 16 years+, 2015-2019	52.5%	58.5%	63.0%
In civilian labor force, female, percent of population age 16 years+, 2015-2019	46.7%	54.3%	58.3%
Total accommodation and food services sales, 2012 (\$1,000)(c)	1,406,488	49,817,925	708,138,598
Total health care and social assistance receipts/revenue, 2012 (\$1,000)(c)	2,089,392	124,061,425	2,040,441,203
Total manufacturers shipments, 2012 (\$1,000)(c)	607,484	96,924,106	5,696,729,632
Total merchant wholesaler sales, 2012 (\$1,000)(c)	2,306,517	252,626,608	5,208,023,478
Total retail sales, 2012 (\$1,000)(c)	5,304,147	273,867,145	4,219,821,871
Total retail sales per capita, 2012(c)	\$15,956	\$14,177	\$13,443
Transportation			
Mean travel time to work (minutes), workers age 16 years+, 2015-2019	24.7	27.8	26.9
Income & Poverty			
Median household income (in 2019 dollars), 2015-2019	\$69,653	\$55,660	\$62,843
Per capita income in past 12 months (in 2019 dollars), 2015-2019	\$45,567	\$31,619	\$34,103
Persons in poverty, percent	9.4%	12.7%	10.5%

Legend

The vintage year (e.g., V2019) refers to the final year of the series (2010 thru 2019). Different vintage years of estimates are not comparable.

Fact Notes

(c) Economic Census - Puerto Rico data are not comparable to U.S. Economic Census data

Source: U.S. Census Bureau, State & County QuickFacts.

Business and Geography QuickFacts

	Collier County	Florida	United States
Businesses			
Total employer establishments, 2019	12,563	574,51	7,959,103
Total employment, 2019	136,239	8,860,04	132,989,428
Total annual payroll, 2019 (\$1,000)	6,260,044	426,908,31	7,428,553,593
Total employment, percent change, 2018-2019	2.4%	2.2%	1.6%
Total nonemployer establishments, 2018	43,851	2,388,050	26,485,532
All firms, 2012	40,670	2,100,187	27,626,360
Men-owned firms, 2012	22,178	1,084,885	14,844,597
Women-owned firms, 2012	13,667	807,817	9,878,397
Minority-owned firms, 2012	10,945	926,112	7,952,386
Nonminority-owned firms, 2012	28,411	1,121,749	18,987,918
Veteran-owned firms, 2012	4,236	185,756	2,521,682
Nonveteran-owned firms, 2012	34,539	1,846,686	24,070,685
Geography			
Population per square mile, 2010	160.9	350.6	87.4
Land area in square miles, 2010	1,998.32	53,624.76	3,531,905.43
FIPS Code	12021	12	1

Source: U.S. Census Bureau, State & County QuickFacts.

Labor Force, Employment, and Unemployment

	April 2021				April 2020			
	LABOR	EMPLOY-	UNEMPLOYMENT		LABOR	EMPLOY-	UNEMPLOYMENT	
	FORCE	MENT	LEVEL	RATE (%)	FORCE	MENT	LEVEL	RATE (%)
Workforce Region 24	640,308	611,949	28,359	4.4	587,294	501,348	85,946	14.6
Charlotte County	73,490	69,956	3,534	4.8	68,093	57,714	10,379	15.2
Collier County	188,279	181,120	7,159	3.8	167,457	143,548	23,909	14.3
Glades County	5,683	5,460	223	3.9	5,032	4,700	332	6.6
Hendry County	16,808	15,875	933	5.6	14,787	13,339	1,448	9.8
Lee County	356,048	339,538	16,510	4.6	331,925	282,047	49,878	15.0
Florida	10,357,000	9,825,000	532,000	5.1	9,718,000	8,369,000	1,349,000	13.9
United States	160,379,000	151,160,000	9,220,000	5.7	155,830,000	133,326,000	22,504,000	14.4

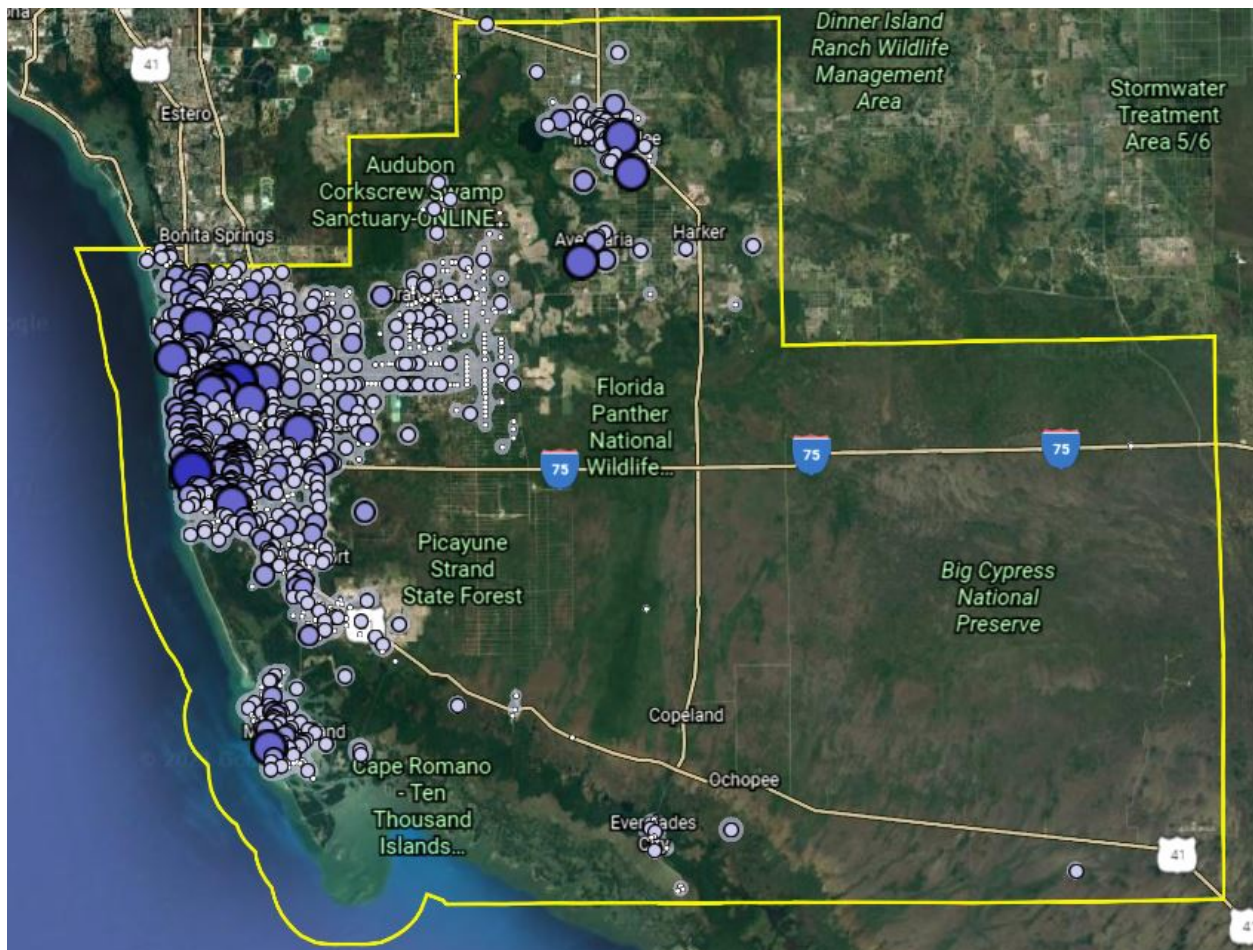
Source: U.S. Department of Labor, Bureau of Labor Statistics, Local Area Unemployment Statistics.

Population

	Population Estimate (as of July 1)							
	2012	2013	2014	2015	2016	2017	2018	2019
Workforce Region 24	1,189,713	1,213,971	1,243,901	1,280,414	1,319,208	1,348,798	1,372,542	1,400,222
Charlotte County	162,744	164,671	168,041	172,382	177,671	181,522	184,849	188,910
Collier County	332,233	338,987	347,211	356,041	365,445	372,678	378,201	384,902
Glades County	12,669	12,670	12,943	13,099	13,406	13,580	13,686	13,811
Hendry County	37,870	37,809	38,474	39,248	40,037	41,018	41,336	42,022
Lee County	644,197	659,834	677,232	699,644	722,649	740,000	754,470	770,577
Florida	19,297,822	19,545,621	19,845,911	20,209,042	20,613,477	20,963,613	21,244,317	21,477,737
United States	313,830,990	315,993,715	318,301,008	320,635,163	322,941,311	324,985,539	326,687,501	328,239,523

Source: U.S. Census Bureau, Population Division.

Where Workers Work in Collier County



Source: U.S. Census Bureau, OnTheMap Application and Longitudinal Employer-Household Dynamics program.

Map Legend

Job Density [Jobs/Sq. Mile]

- 5 - 746
- 747 - 2,970
- 2,971 - 6,676
- 6,677 - 11,865
- 11,866 - 18,537

Job Count [Jobs/Census Block]

- 1 - 12
- 13 - 185
- 186 - 933
- 934 - 2,947
- 2,948 - 7,195

Work Area Profile Summary

	Count	Share
Total Primary Jobs	133,631	100.0%
Jobs by Worker Age		
Age 29 or younger	28,243	21.1%
Age 30 to 54	67,739	50.7%
Age 55 or older	37,649	28.2%
Jobs by Earnings		
\$1,250 per month or less	24,790	18.6%
\$1,251 to \$3,333 per month	52,967	39.6%
More than \$3,333 per month	55,874	41.8%
Jobs by NAICS Industry Sector		
Agriculture, Forestry, Fishing and Hunting	3,287	2.5%
Mining, Quarrying, and Oil and Gas Extraction	44	0.0%
Utilities	168	0.1%
Construction	14,645	11.0%
Manufacturing	4,043	3.0%
Wholesale Trade	4,062	3.0%
Retail Trade	16,918	12.7%
Transportation and Warehousing	1,670	1.2%
Information	1,141	0.9%
Finance and Insurance	3,698	2.8%
Real Estate and Rental and Leasing	3,617	2.7%
Professional, Scientific, and Technical Services	6,022	4.5%
Management of Companies and Enterprises	343	0.3%
Administration & Support, Waste Management and Remediation	8,722	6.5%
Educational Services	9,159	6.9%
Health Care and Social Assistance	18,108	13.6%
Arts, Entertainment, and Recreation	8,032	6.0%
Accommodation and Food Services	18,279	13.7%
Other Services (excluding Public Administration)	6,057	4.5%
Public Administration	5,616	4.2%

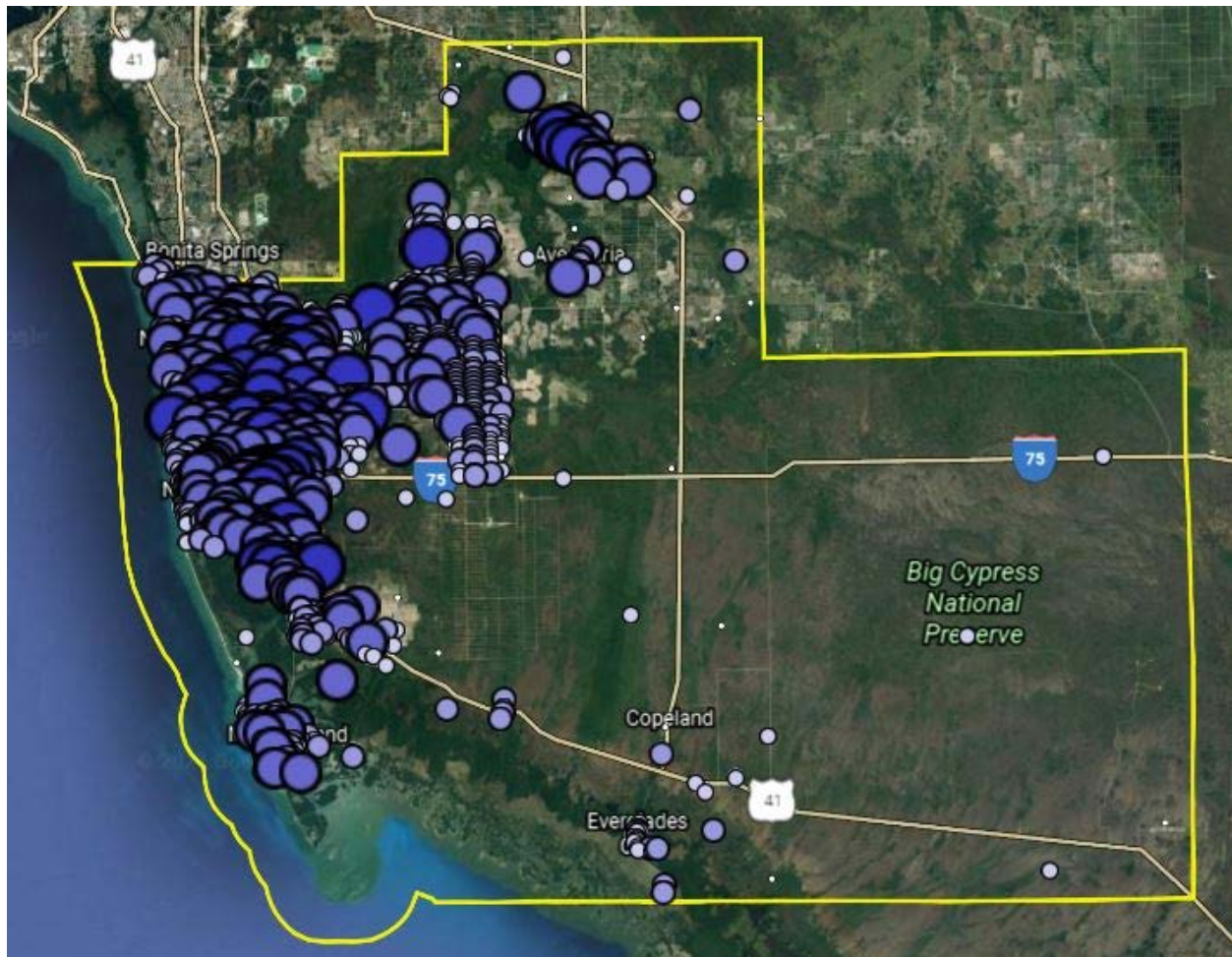
Source: U.S. Census Bureau, OnTheMap Application and Longitudinal Employer-Household Dynamics program.

Work Area Profile Summary - Demographics

	Count	Share
Jobs by Worker Race		
White Alone	114,848	85.9%
Black or African American Alone	13,520	10.1%
American Indian or Alaska Native Alone	584	0.4%
Asian Alone	2,997	2.2%
Native Hawaiian or Other Pacific Islander Alone	150	0.1%
Two or More Race Groups	1,532	1.1%
Jobs by Worker Ethnicity		
Not Hispanic or Latino	97,835	73.2%
Hispanic or Latino	35,796	26.8%
Jobs by Worker Educational Attainment		
Less than high school	18,402	13.8%
High school or equivalent, no college	26,762	20.0%
Some college or Associate degree	31,711	23.7%
Bachelor's degree or advanced degree	28,513	21.3%
Educational attainment not available (workers aged 29 or younger)	28,243	21.1%
Jobs by Worker Sex		
Male	68,136	51.0%
Female	65,495	49.0%

Source: U.S. Census Bureau, OnTheMap Application and Longitudinal Employer-Household Dynamics program.

Where Workers Live in Collier County



Source: U.S. Census Bureau, OnTheMap Application and Longitudinal Employer-Household Dynamics program.

Map Legend

Job Density [Jobs/Sq. Mile]

- 5 - 163
- 164 - 637
- 638 - 1,427
- 1,428 - 2,534
- 2,535 - 3,957

Job Count [Jobs/Census Block]

- 1 - 2
- 3 - 21
- 22 - 106
- 107 - 333
- 334 - 813

Home Area Profile Summary

	Count	Share
Total Primary Jobs	132,014	100.0%
Jobs by Worker Age		
Age 29 or younger	28,364	21.5%
Age 30 to 54	66,091	50.1%
Age 55 or older	37,559	28.5%
Jobs by Earnings		
\$1,250 per month or less	26,359	20.0%
\$1,251 to \$3,333 per month	52,316	39.6%
More than \$3,333 per month	53,339	40.4%
Jobs by NAICS Industry Sector		
Agriculture, Forestry, Fishing and Hunting	3,139	2.4%
Mining, Quarrying, and Oil and Gas Extraction	73	0.1%
Utilities	234	0.2%
Construction	12,628	9.6%
Manufacturing	3,864	2.9%
Wholesale Trade	4,318	3.3%
Retail Trade	17,996	13.6%
Transportation and Warehousing	2,350	1.8%
Information	1,506	1.1%
Finance and Insurance	4,081	3.1%
Real Estate and Rental and Leasing	3,658	2.8%
Professional, Scientific, and Technical Services	6,990	5.3%
Management of Companies and Enterprises	894	0.7%
Administration & Support, Waste Management and Remediation	9,711	7.4%
Educational Services	8,628	6.5%
Health Care and Social Assistance	17,067	12.9%
Arts, Entertainment, and Recreation	6,337	4.8%
Accommodation and Food Services	17,771	13.5%
Other Services (excluding Public Administration)	5,552	4.2%
Public Administration	5,217	4.0%

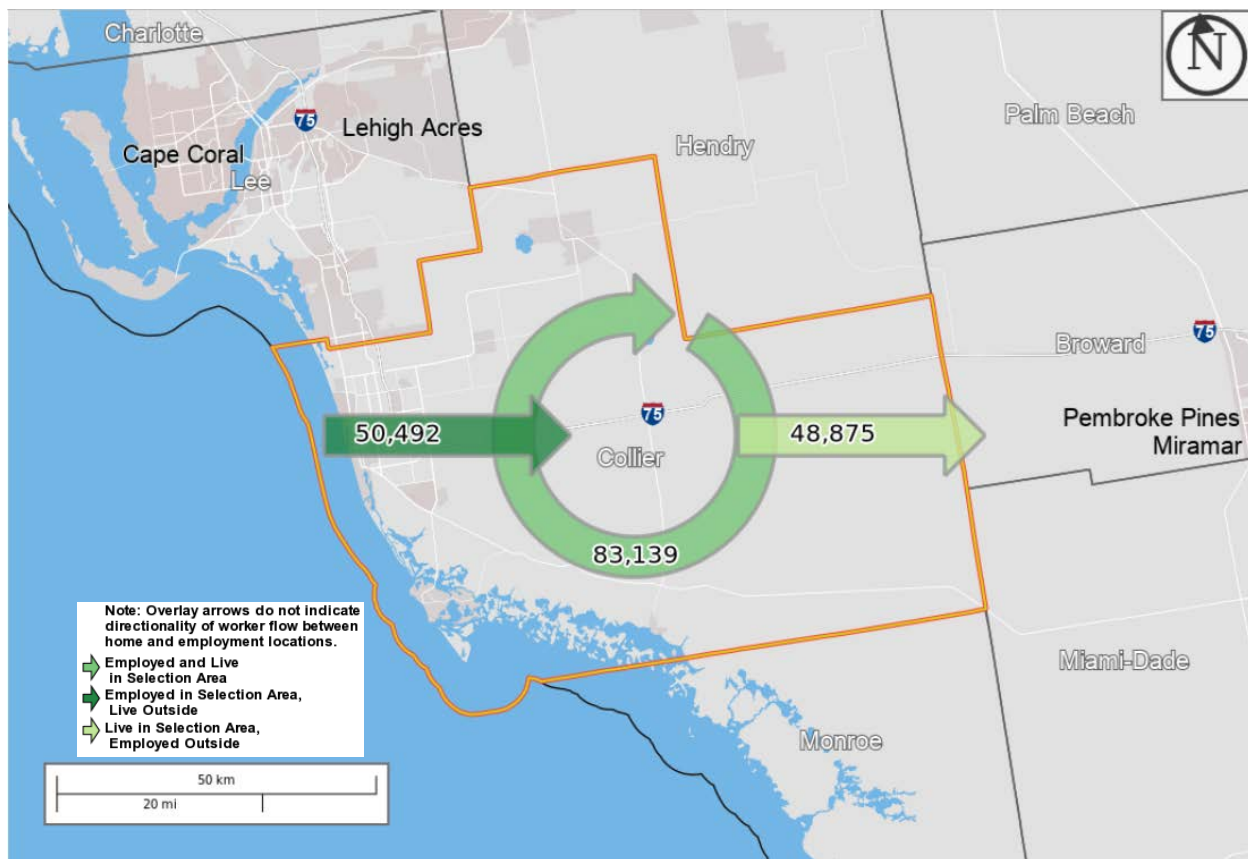
Source: U.S. Census Bureau, OnTheMap Application and Longitudinal Employer-Household Dynamics program.

Home Area Profile Summary - Demographics

	Count	Share
Jobs by Worker Race		
White Alone	113,699	86.1%
Black or African American Alone	13,302	10.1%
American Indian or Alaska Native Alone	608	0.5%
Asian Alone	2,779	2.1%
Native Hawaiian or Other Pacific Islander Alone	155	0.1%
Two or More Race Groups	1,471	1.1%
Jobs by Worker Ethnicity		
Not Hispanic or Latino	95,587	72.4%
Hispanic or Latino	36,427	27.6%
Jobs by Worker Educational Attainment		
Less than high school	18,069	13.7%
High school or equivalent, no college	26,629	20.2%
Some college or Associate degree	31,179	23.6%
Bachelor's degree or advanced degree	27,773	21.0%
Educational attainment not available (workers aged 29 or younger)	28,364	21.5%
Jobs by Worker Sex		
Male	66,982	50.7%
Female	65,032	49.3%

Source: U.S. Census Bureau, OnTheMap Application and Longitudinal Employer-Household Dynamics program.

Labor Inflow/Outflow Map



Source: U.S. Census Bureau, OnTheMap Application and Longitudinal Employer-Household Dynamics program.

Of the 133,631 people who are employed in Collier County, 83,139 (62.2%) live and work in the county. There are 50,492 (37.8%) workers who live outside Collier County and work within the county. Of the 132,014 workers who live within Collier County, 48,875 (37.0%) residents work outside the county. There is a net inflow of 1,617 workers into Collier County.

Labor Inflow/Outflow Summary

	Count	Share
Collier County Labor Market Size (Primary Jobs)		
Employed in the Selection Area	133,631	100.0%
Living in the Selection Area	132,014	98.8%
Net Job Inflow (+) or Outflow (-)	1,617	-
Collier County Labor Force Efficiency (Primary Jobs)		
Living in the Selection Area	132,014	100.0%
Living and Employed in the Selection Area	83,139	63.0%
Living in the Selection Area but Employed Outside	48,875	37.0%
Collier County Employment Efficiency (Primary Jobs)		
Employed in the Selection Area	133,631	100.0%
Employed and Living in the Selection Area	83,139	62.2%
Employed in the Selection Area but Living Outside	50,492	37.8%
Outflow Job Characteristics		
External Jobs Filled by Residents	48,875	100.0%
Workers Aged 29 or younger	11,854	24.3%
Workers Aged 30 to 54	23,931	49.0%
Workers Aged 55 or older	13,090	26.8%
Workers Earning \$1,250 per month or less	11,372	23.3%
Workers Earning \$1,251 to \$3,333 per month	19,347	39.6%
Workers Earning More than \$3,333 per month	18,156	37.1%
Workers in the "Goods Producing" Industry Class	6,987	14.3%
Workers in the "Trade, Transportation, and Utilities" Industry Class	13,748	28.1%
Workers in the "All Other Services" Industry Class	28,140	57.6%

Source: U.S. Census Bureau, OnTheMap Application and Longitudinal Employer-Household Dynamics program.

Labor Inflow/Outflow Summary (continued)

	Count	Share
Inflow Job Characteristics (Primary Jobs)		
Internal Jobs Filled by Outside Workers	50,492	100.0%
Workers Aged 29 or younger	11,733	23.2%
Workers Aged 30 to 54	25,579	50.7%
Workers Aged 55 or older	13,180	26.1%
Workers Earning \$1,250 per month or less	9,803	19.4%
Workers Earning \$1,251 to \$3,333 per month	19,998	39.6%
Workers Earning More than \$3,333 per month	20,691	41.0%
Workers in the "Goods Producing" Industry Class	9,302	18.4%
Workers in the "Trade, Transportation, and Utilities" Industry Class	11,668	23.1%
Workers in the "All Other Services" Industry Class	29,522	58.5%
Interior Flow Job Characteristics (Primary Jobs)		
Internal Jobs Filled by Residents	83,139	100.0%
Workers Aged 29 or younger	16,510	19.9%
Workers Aged 30 to 54	42,160	50.7%
Workers Aged 55 or older	24,469	29.4%
Workers Earning \$1,250 per month or less	14,987	18.0%
Workers Earning \$1,251 to \$3,333 per month	32,969	39.7%
Workers Earning More than \$3,333 per month	35,183	42.3%
Workers in the "Goods Producing" Industry Class	12,717	15.3%
Workers in the "Trade, Transportation, and Utilities" Industry Class	11,150	13.4%
Workers in the "All Other Services" Industry Class	59,272	71.3%

Source: U.S. Census Bureau, OnTheMap Application and Longitudinal Employer-Household Dynamics program.

Work Destination Summary

Where Workers are Employed Who Live in Collier County

	Count	Share
Total Primary Jobs	132,014	100.0%
Job Counts by Counties Where Workers are Employed - Primary Jobs		
Collier County, FL	83,139	63.0%
Lee County, FL	16,710	12.7%
Broward County, FL	4,539	3.4%
Miami-Dade County, FL	3,950	3.0%
Palm Beach County, FL	3,741	2.8%
Hillsborough County, FL	2,726	2.1%
Orange County, FL	2,317	1.8%
Sarasota County, FL	1,646	1.2%
Pinellas County, FL	1,449	1.1%
Manatee County, FL	1,190	0.9%
Charlotte County, FL	903	0.7%
Polk County, FL	900	0.7%
Duval County, FL	689	0.5%
Seminole County, FL	606	0.5%
Brevard County, FL	581	0.4%
Hendry County, FL	521	0.4%
Martin County, FL	473	0.4%
Pasco County, FL	426	0.3%
Osceola County, FL	377	0.3%
St. Lucie County, FL	344	0.3%
Volusia County, FL	322	0.2%
Monroe County, FL	314	0.2%
Lake County, FL	303	0.2%
Indian River County, FL	285	0.2%
Leon County, FL	246	0.2%
All Other Locations	3,317	2.5%

Source: U.S. Census Bureau, OnTheMap Application and Longitudinal Employer-Household Dynamics program.

Home Destination Summary

Where Workers Live Who are Employed in Collier County

	Count	Share
Total Primary Jobs	133,631	100.0%
Job Counts by Counties Where Workers Live - Primary Jobs		
Collier County, FL	83,139	62.2%
Lee County, FL	24,800	18.6%
Miami-Dade County, FL	3,974	3.0%
Broward County, FL	2,845	2.1%
Palm Beach County, FL	2,393	1.8%
Hillsborough County, FL	1,504	1.1%
Sarasota County, FL	1,257	0.9%
Charlotte County, FL	1,146	0.9%
Orange County, FL	1,104	0.8%
Manatee County, FL	1,070	0.8%
Pinellas County, FL	1,046	0.8%
Monroe County, FL	877	0.7%
Polk County, FL	667	0.5%
Highlands County, FL	551	0.4%
Hendry County, FL	538	0.4%
Brevard County, FL	535	0.4%
Pasco County, FL	493	0.4%
St. Lucie County, FL	471	0.4%
Seminole County, FL	371	0.3%
Duval County, FL	355	0.3%
Osceola County, FL	274	0.2%
Martin County, FL	261	0.2%
DeSoto County, FL	250	0.2%
Lake County, FL	250	0.2%
Indian River County, FL	236	0.2%
All Other Locations	3,224	2.4%

Source: U.S. Census Bureau, OnTheMap Application and Longitudinal Employer-Household Dynamics program.

**Florida Department of Economic Opportunity
Bureau of Workforce Statistics and Economic Research
(WSER)**

**Caldwell Building
MSC G-020
107 E. Madison Street
Tallahassee, Florida 32399-4111
Phone (850) 245-7257**



www.floridajobs.org/labor-market-information