

Summary of Employment, Demographics, and Commuting Patterns for Clay County, Florida



May 2021

Contents

Labor Shed Analysis	3
OnTheMap, Census Bureau	3
Florida Department of Economic Opportunity, Bureau of Workforce Statistics and Economic Research (WSER)	3
Executive Summary	4
People QuickFacts.....	5
Business and Geography QuickFacts.....	7
Labor Force, Employment, and Unemployment	7
Population	8
Where Workers Work in Clay County	9
Work Area Profile Summary	10
Work Area Profile Summary - Demographics	11
Where Workers Live in Clay County	12
Home Area Profile Summary	13
Home Area Profile Summary - Demographics.....	14
Labor Inflow/Outflow Map	15
Labor Inflow/Outflow Summary	16
Work Destination Summary	18
Home Destination Summary	19

Labor Shed Analysis

A labor shed analysis is defined as where workers work and where workers live relative to a user-defined selection area. This analysis helps to determine where a labor market draws its commuting workers. Labor shed studies can draw comparisons between various geographies including state, Congressional District, Metropolitan Statistical Area (MSA), county, Workforce Investment Area (WIA), Zip Code, and Census tract. By indicating how many of the selection area workers work outside the area, labor sheds can help identify potential pools of workers who would be available for work in the user-defined area.

Labor shed studies provide economic developers and existing or prospective employers a tool to understand the local labor market and make informed expansion and site selection decisions. In addition, labor shed studies can help indicate potential impacts from environmental, social, or economic incidents.

OnTheMap, Census Bureau

OnTheMap is a mapping and reporting tool developed by the U.S. Census Bureau showing employment and home locations of workers with companion reports for user-defined areas. It is the first synthetic data product released by the Census Bureau. OnTheMap is an important tool for Florida to perform labor inflow/outflow analyses and provide commuting data to planning and economic development agencies as well as Regional Workforce Boards. OnTheMap data is also used by the Department of Economic Opportunity to help quantify natural disaster impacts for emergency management agencies based on where workers live and where they work.

OnTheMap integrates existing data from state-supplied administrative records on workers and employers with existing federal censuses, surveys, and other administrative records. The state Labor Market Information (LMI) agencies supply key data from unemployment wage records and from businesses each quarter. The Census Bureau merges the state-supplied data with current demographic information to produce the data found in OnTheMap. By combining data from different administrative sources, censuses, and surveys, the Census Bureau produces local employment information that was not previously available.

Florida Department of Economic Opportunity, Bureau of Workforce Statistics and Economic Research (WSER)

The Florida Department of Economic Opportunity, Bureau of Workforce Statistics and Economic Research (WSER), produces, analyzes, and distributes labor statistics to improve economic decision making. These data are produced as part of the federal/state cooperative statistical program with the U.S. Department of Labor, Bureau of Labor Statistics, and the Employment and Training Administration.

Executive Summary

The analysis of workforce and demographic characteristics, including commuting patterns of Clay County was conducted to provide economic data on the population and labor force living or working in the county. The report is useful for detailing where workers work and live in order to align resources. This report includes population, labor force, and demographics for Clay County.

Workers employed in Clay County are clustered in the Health Care and Social Assistance (16.4%) and Retail Trade (15.8%) industries. Workers living in Clay County are concentrated in the Health Care and Social Assistance (13.9%) and Retail Trade (13.1%) industries.

A detailed examination of commuting patterns for Clay County shows that the county has a net outflow of -32,875 workers. Using the latest annual Census data available, there were 52,139 workers employed in Clay County and 85,014 workers living in Clay County. Of the workers who lived in the county, 62,840 workers (73.9%) were employed outside the county.

With 73.9% of workers who reside in Clay County employed outside the county, Clay County was ranked 11th of 67 for the highest outflow rankings among Florida counties. Leon (20.9%) had the lowest outflow rate, followed by Miami-Dade (22.0%) and Duval (25.5%). Glades (85.1%), Jefferson (82.2%), and Union (79.6%) had the highest worker outflow rates.

Of the 62,840 Clay County workers employed outside the county, the top destination counties are Duval County (39,058 workers), St. Johns County (2,870 workers), and Orange County (2,765 workers). Of the 29,965 Clay County workers living outside the county, the top origin counties are Duval County (14,108 workers), St. Johns County (2,901 workers), and Putnam County (1,200 workers).

People QuickFacts

	Clay County	Florida	United States
Population			
Population estimates, July 1, 2019, (V2019)	219,252	21,477,737	328,239,523
Population estimates base, April 1, 2010, (V2019)	190,878	18,804,564	308,758,105
Population, percent change - April 1, 2010 (estimates base) to July 1, 2019, (V2019)	14.9%	14.2%	6.3%
Population, Census, April 1, 2010	190,865	18,801,310	308,745,538
Population, Census, April 1, 2020	X	21,538,187	331,449,281
Age and Sex			
Persons under 5 years, percent	5.4%	5.3%	6.0%
Persons under 18 years, percent	23.0%	19.7%	22.3%
Persons 65 years and over, percent	16.3%	20.9%	16.5%
Female persons, percent	50.7%	51.1%	50.8%
Race and Hispanic Origin			
White alone, percent	80.3%	77.3%	76.3%
Black or African American alone, percent(a)	12.6%	16.9%	13.4%
American Indian and Alaska Native alone, percent(a)	0.5%	0.5%	1.3%
Asian alone, percent(a)	3.1%	3.0%	5.9%
Native Hawaiian and Other Pacific Islander alone, percent(a)	0.2%	0.1%	0.2%
Two or More Races, percent	3.3%	2.2%	2.8%
Hispanic or Latino, percent(b)	10.4%	26.4%	18.5%
White alone, not Hispanic or Latino, percent	71.7%	53.2%	60.1%
Population Characteristics			
Veterans, 2015-2019	26,414	1,440,338	18,230,322
Foreign born persons, percent, 2015-2019	6.9%	20.7%	13.6%
Housing			
Housing units, July 1, 2019, (V2019)	82,617	9,673,682	139,684,244
Owner-occupied housing unit rate, 2015-2019	75.0%	65.4%	64.0%
Median value of owner-occupied housing units, 2015-2019	\$185,400	\$215,300	\$217,500
Median selected monthly owner costs -with a mortgage, 2015-2019	\$1,377	\$1,503	\$1,595
Median selected monthly owner costs -without a mortgage, 2015-2019	\$400	\$505	\$500
Median gross rent, 2015-2019	\$1,148	\$1,175	\$1,062
Building permits, 2020	1,432	164,074	1,471,141

Legend

The vintage year (e.g., V2019) refers to the final year of the series (2010 thru 2019). Different vintage years of estimates are not comparable.

Fact Notes

(a) Includes persons reporting only one race

(b) Hispanics may be of any race, so also are included in applicable race categories

Source: U.S. Census Bureau, State & County QuickFacts.

People QuickFacts (continued)

	Clay County	Florida	United States
Families & Living Arrangements			
Households, 2015-2019	74,333	7,736,311	120,756,048
Persons per household, 2015-2019	2.83	2.65	2.62
Living in same house 1 year ago, percent of persons age 1 year+, 2015-2019	82.3%	84.5%	85.8%
Language other than English spoken at home, percent of persons age 5 years+, 2015-2019	11.0%	29.4%	21.6%
Computer and Internet Use			
Households with a computer, percent, 2015-2019	94.9%	91.5%	90.3%
Households with a broadband Internet subscription, percent, 2015-2019	90.5%	83.0%	82.7%
Education			
High school graduate or higher, percent of persons age 25 years+, 2015-2019	91.8%	88.2%	88.0%
Bachelor's degree or higher, percent of persons age 25 years+, 2015-2019	24.9%	29.9%	32.1%
Health			
With a disability, under age 65 years, percent, 2015-2019	9.5%	8.6%	8.6%
Persons without health insurance, under age 65 years, percent	12.4%	16.3%	9.5%
Economy			
In civilian labor force, total, percent of population age 16 years+, 2015-2019	61.5%	58.5%	63.0%
In civilian labor force, female, percent of population age 16 years+, 2015-2019	57.1%	54.3%	58.3%
Total accommodation and food services sales, 2012 (\$1,000)(c)	238,530	49,817,925	708,138,598
Total health care and social assistance receipts/revenue, 2012 (\$1,000)(c)	824,992	124,061,425	2,040,441,203
Total manufacturers shipments, 2012 (\$1,000)(c)	D	96,924,106	5,696,729,632
Total merchant wholesaler sales, 2012 (\$1,000)(c)	329,737	252,626,608	5,208,023,478
Total retail sales, 2012 (\$1,000)(c)	1,909,475	273,867,145	4,219,821,871
Total retail sales per capita, 2012(c)	\$9,825	\$14,177	\$13,443
Transportation			
Mean travel time to work (minutes), workers age 16 years+, 2015-2019	33.7	27.8	26.9
Income & Poverty			
Median household income (in 2019 dollars), 2015-2019	\$65,740	\$55,660	\$62,843
Per capita income in past 12 months (in 2019 dollars), 2015-2019	\$30,483	\$31,619	\$34,103
Persons in poverty, percent	8.3%	12.7%	10.5%

Legend

The vintage year (e.g., V2019) refers to the final year of the series (2010 thru 2019). Different vintage years of estimates are not comparable.

Fact Notes

(c) Economic Census - Puerto Rico data are not comparable to U.S. Economic Census data

Value Flags

"D" Suppressed to avoid disclosure of confidential information

Source: U.S. Census Bureau, State & County QuickFacts.

Business and Geography QuickFacts

	Clay County	Florida	United States
Businesses			
Total employer establishments, 2019	3,993	574,51	7,959,103
Total employment, 2019	44,049	8,860,04	132,989,428
Total annual payroll, 2019 (\$1,000)	1,660,903	426,908,31	7,428,553,593
Total employment, percent change, 2018-2019	-1.8%	2.2%	1.6%
Total nonemployer establishments, 2018	14,765	2,388,050	26,485,532
All firms, 2012	12,609	2,100,187	27,626,360
Men-owned firms, 2012	6,373	1,084,885	14,844,597
Women-owned firms, 2012	4,718	807,817	9,878,397
Minority-owned firms, 2012	2,584	926,112	7,952,386
Nonminority-owned firms, 2012	9,561	1,121,749	18,987,918
Veteran-owned firms, 2012	1,912	185,756	2,521,682
Nonveteran-owned firms, 2012	9,880	1,846,686	24,070,685
Geography			
Population per square mile, 2010	315.8	350.6	87.4
Land area in square miles, 2010	604.36	53,624.76	3,531,905.43
FIPS Code	12019	12	1

Source: U.S. Census Bureau, State & County QuickFacts.

Labor Force, Employment, and Unemployment

	April 2021				April 2020			
	LABOR	EMPLOY-	UNEMPLOYMENT		LABOR	EMPLOY-	UNEMPLOYMENT	
	FORCE	MENT	LEVEL	RATE (%)	FORCE	MENT	LEVEL	RATE (%)
Workforce Region 08	833,880	796,836	37,044	4.4	761,858	674,044	87,814	11.5
Baker County	12,317	11,825	492	4.0	10,754	9,984	770	7.2
Clay County	110,025	105,660	4,365	4.0	99,194	89,328	9,866	9.9
Duval County	502,743	478,724	24,019	4.8	459,188	404,198	54,990	12.0
Nassau County	42,885	41,238	1,647	3.8	39,543	34,829	4,714	11.9
Putnam County	27,081	25,322	1,759	6.5	25,145	22,327	2,818	11.2
St. Johns County	138,829	134,067	4,762	3.4	128,034	113,378	14,656	11.4
Florida	10,357,000	9,825,000	532,000	5.1	9,718,000	8,369,000	1,349,000	13.9
United States	160,379,000	151,160,000	9,220,000	5.7	155,830,000	133,326,000	22,504,000	14.4

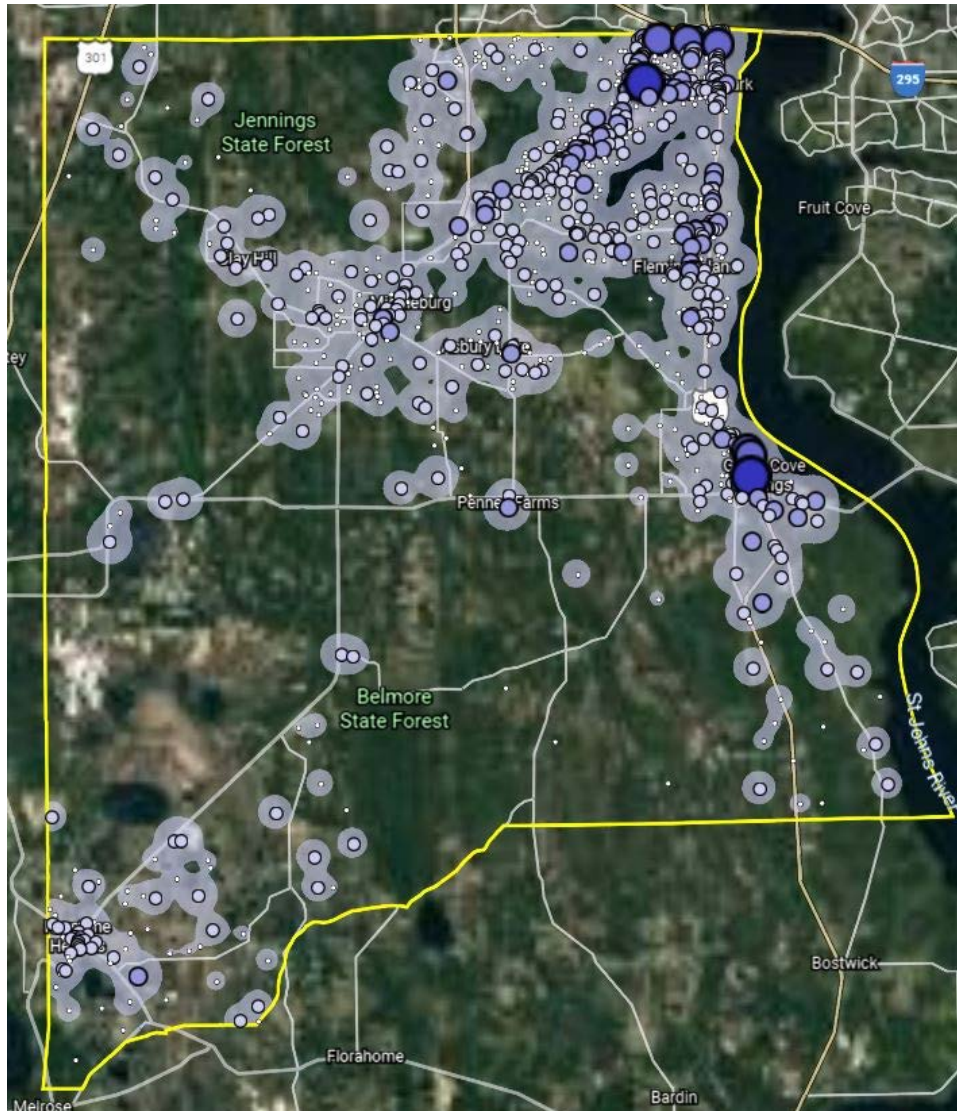
Source: U.S. Department of Labor, Bureau of Labor Statistics, Local Area Unemployment Statistics.

Population

	Population Estimate (as of July 1)							
	2012	2013	2014	2015	2016	2017	2018	2019
Workforce Region 08	1,450,534	1,465,802	1,488,417	1,516,577	1,548,396	1,578,417	1,606,706	1,634,035
Baker County	27,053	27,009	27,122	27,355	27,884	28,254	28,353	29,210
Clay County	193,861	195,657	198,570	202,392	207,246	212,228	215,908	219,252
Duval County	880,108	885,943	896,668	910,578	926,010	937,933	948,652	957,755
Nassau County	74,519	75,384	76,250	77,951	80,055	82,925	85,936	88,625
Putnam County	72,927	72,370	71,971	71,939	72,373	73,384	74,043	74,521
St. Johns County	202,066	209,439	217,836	226,362	234,828	243,693	253,814	264,672
Florida	19,297,822	19,545,621	19,845,911	20,209,042	20,613,477	20,963,613	21,244,317	21,477,737
United States	313,830,990	315,993,715	318,301,008	320,635,163	322,941,311	324,985,539	326,687,501	328,239,523

Source: U.S. Census Bureau, Population Division.

Where Workers Work in Clay County



Source: U.S. Census Bureau, OnTheMap Application and Longitudinal Employer-Household Dynamics program.

Map Legend

Job Density [Jobs/Sq. Mile]

- 5 - 599
- 600 - 2,382
- 2,383 - 5,353
- 5,354 - 9,513
- 9,514 - 14,862

Job Count [Jobs/Census Block]

- 1 - 9
- 10 - 143
- 144 - 719
- 720 - 2,273
- 2,274 - 5,548

Work Area Profile Summary

	Count	Share
Total Primary Jobs	52,139	100.0%
Jobs by Worker Age		
Age 29 or younger	12,780	24.5%
Age 30 to 54	27,461	52.7%
Age 55 or older	11,898	22.8%
Jobs by Earnings		
\$1,250 per month or less	11,791	22.6%
\$1,251 to \$3,333 per month	21,243	40.7%
More than \$3,333 per month	19,105	36.6%
Jobs by NAICS Industry Sector		
Agriculture, Forestry, Fishing and Hunting	106	0.2%
Mining, Quarrying, and Oil and Gas Extraction	115	0.2%
Utilities	518	1.0%
Construction	4,178	8.0%
Manufacturing	1,563	3.0%
Wholesale Trade	776	1.5%
Retail Trade	8,213	15.8%
Transportation and Warehousing	791	1.5%
Information	1,047	2.0%
Finance and Insurance	1,249	2.4%
Real Estate and Rental and Leasing	671	1.3%
Professional, Scientific, and Technical Services	4,323	8.3%
Management of Companies and Enterprises	162	0.3%
Administration & Support, Waste Management and Remediation	2,401	4.6%
Educational Services	6,246	12.0%
Health Care and Social Assistance	8,574	16.4%
Arts, Entertainment, and Recreation	1,341	2.6%
Accommodation and Food Services	6,274	12.0%
Other Services (excluding Public Administration)	1,390	2.7%
Public Administration	2,201	4.2%

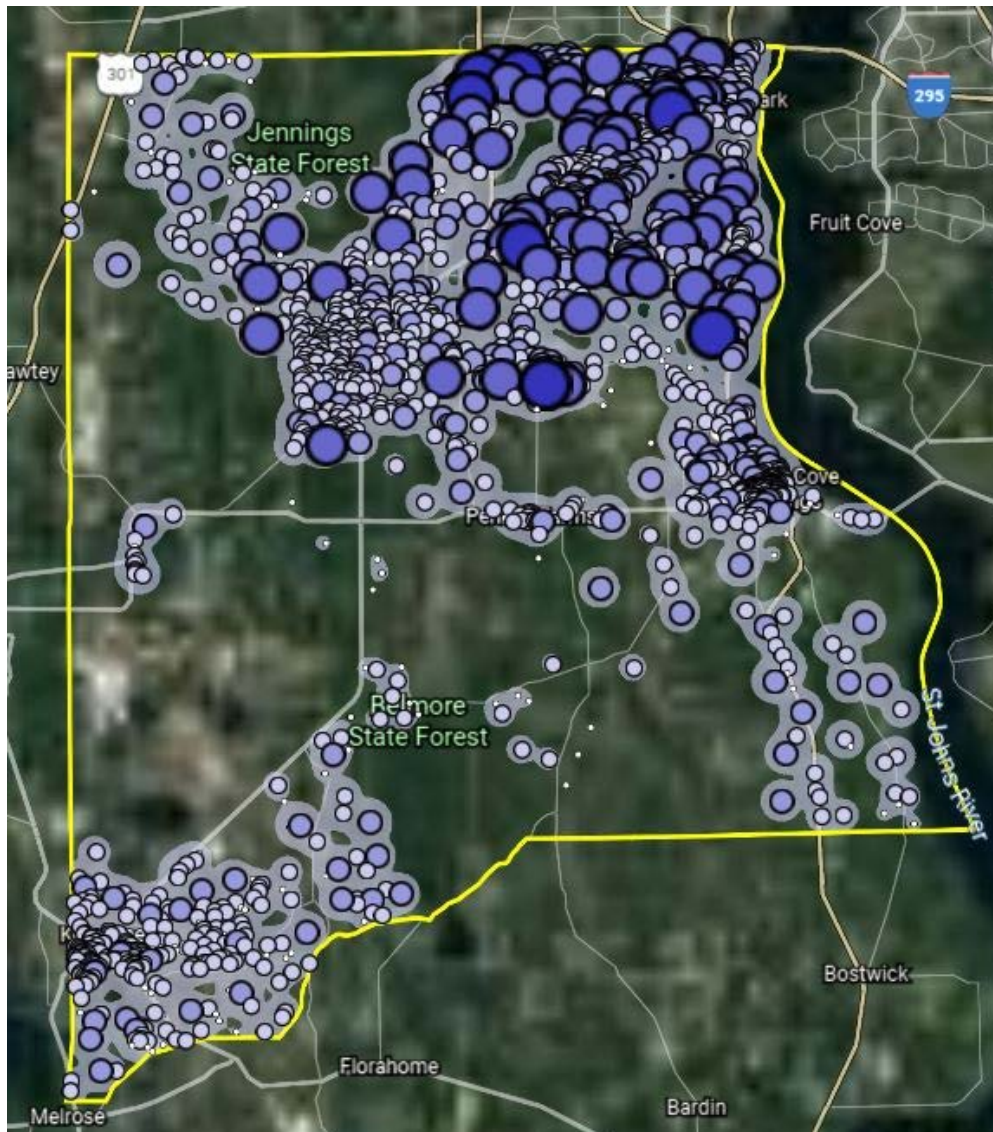
Source: U.S. Census Bureau, OnTheMap Application and Longitudinal Employer-Household Dynamics program.

Work Area Profile Summary - Demographics

	Count	Share
Jobs by Worker Race		
White Alone	41,209	79.0%
Black or African American Alone	8,052	15.4%
American Indian or Alaska Native Alone	243	0.5%
Asian Alone	1,659	3.2%
Native Hawaiian or Other Pacific Islander Alone	70	0.1%
Two or More Race Groups	906	1.7%
Jobs by Worker Ethnicity		
Not Hispanic or Latino	47,457	91.0%
Hispanic or Latino	4,682	9.0%
Jobs by Worker Educational Attainment		
Less than high school	5,373	10.3%
High school or equivalent, no college	11,280	21.6%
Some college or Associate degree	12,948	24.8%
Bachelor's degree or advanced degree	9,758	18.7%
Educational attainment not available (workers aged 29 or younger)	12,780	24.5%
Jobs by Worker Sex		
Male	23,403	44.9%
Female	28,736	55.1%

Source: U.S. Census Bureau, OnTheMap Application and Longitudinal Employer-Household Dynamics program.

Where Workers Live in Clay County



Source: U.S. Census Bureau, OnTheMap Application and Longitudinal Employer-Household Dynamics program.

Map Legend

Job Density [Jobs/Sq. Mile]

- 5 - 204
- 205 - 802
- 803 - 1,800
- 1,801 - 3,196
- 3,197 - 4,992

Job Count [Jobs/Census Block]

- 1 - 3
- 4 - 41
- 42 - 204
- 205 - 644
- 645 - 1,571

Home Area Profile Summary

	Count	Share
Total Primary Jobs	85,014	100.0%
Jobs by Worker Age		
Age 29 or younger	18,211	21.4%
Age 30 to 54	47,154	55.5%
Age 55 or older	19,649	23.1%
Jobs by Earnings		
\$1,250 per month or less	15,600	18.3%
\$1,251 to \$3,333 per month	30,849	36.3%
More than \$3,333 per month	38,565	45.4%
Jobs by NAICS Industry Sector		
Agriculture, Forestry, Fishing and Hunting	266	0.3%
Mining, Quarrying, and Oil and Gas Extraction	81	0.1%
Utilities	580	0.7%
Construction	6,431	7.6%
Manufacturing	3,643	4.3%
Wholesale Trade	3,352	3.9%
Retail Trade	11,110	13.1%
Transportation and Warehousing	3,940	4.6%
Information	1,379	1.6%
Finance and Insurance	5,282	6.2%
Real Estate and Rental and Leasing	1,310	1.5%
Professional, Scientific, and Technical Services	6,009	7.1%
Management of Companies and Enterprises	1,001	1.2%
Administration & Support, Waste Management and Remediation	5,712	6.7%
Educational Services	7,315	8.6%
Health Care and Social Assistance	11,805	13.9%
Arts, Entertainment, and Recreation	1,464	1.7%
Accommodation and Food Services	7,790	9.2%
Other Services (excluding Public Administration)	2,509	3.0%
Public Administration	4,035	4.7%

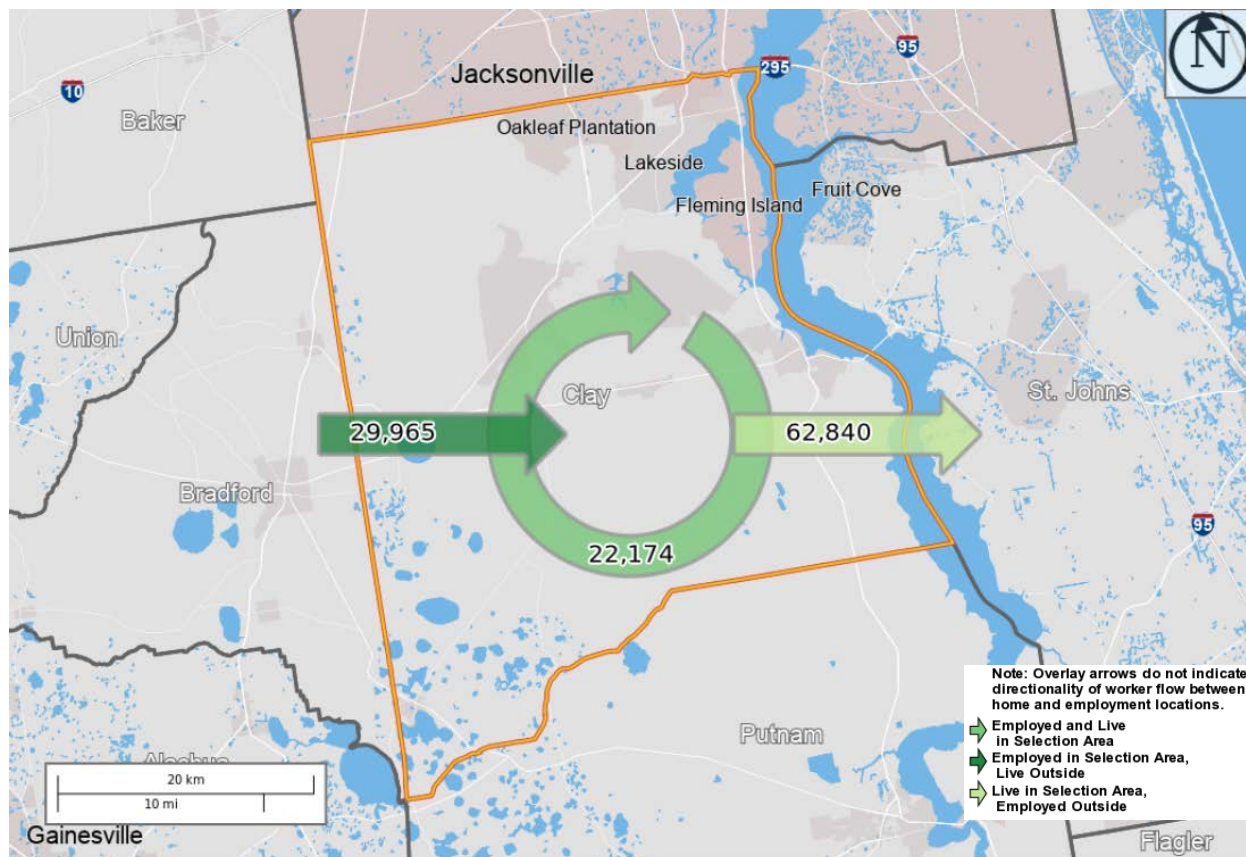
Source: U.S. Census Bureau, OnTheMap Application and Longitudinal Employer-Household Dynamics program.

Home Area Profile Summary - Demographics

	Count	Share
Jobs by Worker Race		
White Alone	69,252	81.5%
Black or African American Alone	10,940	12.9%
American Indian or Alaska Native Alone	357	0.4%
Asian Alone	2,700	3.2%
Native Hawaiian or Other Pacific Islander Alone	123	0.1%
Two or More Race Groups	1,642	1.9%
Jobs by Worker Ethnicity		
Not Hispanic or Latino	77,481	91.1%
Hispanic or Latino	7,533	8.9%
Jobs by Worker Educational Attainment		
Less than high school	8,470	10.0%
High school or equivalent, no college	18,503	21.8%
Some college or Associate degree	21,707	25.5%
Bachelor's degree or advanced degree	18,123	21.3%
Educational attainment not available (workers aged 29 or younger)	18,211	21.4%
Jobs by Worker Sex		
Male	42,550	50.1%
Female	42,464	49.9%

Source: U.S. Census Bureau, OnTheMap Application and Longitudinal Employer-Household Dynamics program.

Labor Inflow/Outflow Map



Source: U.S. Census Bureau, OnTheMap Application and Longitudinal Employer-Household Dynamics program.

Of the 52,139 people who are employed in Clay County, 22,174 (42.5%) live and work in the county. There are 29,965 (57.5%) workers who live outside Clay County and work within the county. Of the 85,014 workers who live within Clay County, 62,840 (73.9%) residents work outside the county. There is a net outflow of -32,875 workers from Clay County.

Labor Inflow/Outflow Summary

	Count	Share
Clay County Labor Market Size (Primary Jobs)		
Employed in the Selection Area	52,139	100.0%
Living in the Selection Area	85,014	163.1%
Net Job Inflow (+) or Outflow (-)	-32,875	-
Clay County Labor Force Efficiency (Primary Jobs)		
Living in the Selection Area	85,014	100.0%
Living and Employed in the Selection Area	22,174	26.1%
Living in the Selection Area but Employed Outside	62,840	73.9%
Clay County Employment Efficiency (Primary Jobs)		
Employed in the Selection Area	52,139	100.0%
Employed and Living in the Selection Area	22,174	42.5%
Employed in the Selection Area but Living Outside	29,965	57.5%
Outflow Job Characteristics		
External Jobs Filled by Residents	62,840	100.0%
Workers Aged 29 or younger	13,554	21.6%
Workers Aged 30 to 54	35,145	55.9%
Workers Aged 55 or older	14,141	22.5%
Workers Earning \$1,250 per month or less	10,970	17.5%
Workers Earning \$1,251 to \$3,333 per month	21,991	35.0%
Workers Earning More than \$3,333 per month	29,879	47.5%
Workers in the "Goods Producing" Industry Class	8,024	12.8%
Workers in the "Trade, Transportation, and Utilities" Industry Class	16,121	25.7%
Workers in the "All Other Services" Industry Class	38,695	61.6%

Source: U.S. Census Bureau, OnTheMap Application and Longitudinal Employer-Household Dynamics program.

Labor Inflow/Outflow Summary (continued)

	Count	Share
Inflow Job Characteristics (Primary Jobs)		
Internal Jobs Filled by Outside Workers	29,965	100.0%
Workers Aged 29 or younger	8,123	27.1%
Workers Aged 30 to 54	15,452	51.6%
Workers Aged 55 or older	6,390	21.3%
Workers Earning \$1,250 per month or less	7,161	23.9%
Workers Earning \$1,251 to \$3,333 per month	12,385	41.3%
Workers Earning More than \$3,333 per month	10,419	34.8%
Workers in the "Goods Producing" Industry Class	3,565	11.9%
Workers in the "Trade, Transportation, and Utilities" Industry Class	7,437	24.8%
Workers in the "All Other Services" Industry Class	18,963	63.3%
Interior Flow Job Characteristics (Primary Jobs)		
Internal Jobs Filled by Residents	22,174	100.0%
Workers Aged 29 or younger	4,657	21.0%
Workers Aged 30 to 54	12,009	54.2%
Workers Aged 55 or older	5,508	24.8%
Workers Earning \$1,250 per month or less	4,630	20.9%
Workers Earning \$1,251 to \$3,333 per month	8,858	39.9%
Workers Earning More than \$3,333 per month	8,686	39.2%
Workers in the "Goods Producing" Industry Class	2,397	10.8%
Workers in the "Trade, Transportation, and Utilities" Industry Class	2,861	12.9%
Workers in the "All Other Services" Industry Class	16,916	76.3%

Source: U.S. Census Bureau, OnTheMap Application and Longitudinal Employer-Household Dynamics program.

Work Destination Summary

Where Workers are Employed Who Live in Clay County

	Count	Share
Total Primary Jobs	85,014	100.0%
Job Counts by Counties Where Workers are Employed - Primary Jobs		
Duval County, FL	39,058	45.9%
Clay County, FL	22,174	26.1%
St. Johns County, FL	2,870	3.4%
Orange County, FL	2,765	3.3%
Alachua County, FL	2,283	2.7%
Hillsborough County, FL	1,815	2.1%
Putnam County, FL	969	1.1%
Volusia County, FL	923	1.1%
Seminole County, FL	877	1.0%
Broward County, FL	871	1.0%
Pinellas County, FL	819	1.0%
Bradford County, FL	693	0.8%
Miami-Dade County, FL	637	0.7%
Leon County, FL	628	0.7%
Marion County, FL	529	0.6%
Polk County, FL	515	0.6%
Nassau County, FL	476	0.6%
Brevard County, FL	466	0.5%
Palm Beach County, FL	464	0.5%
Baker County, FL	433	0.5%
Lake County, FL	341	0.4%
Columbia County, FL	270	0.3%
Escambia County, FL	256	0.3%
Flagler County, FL	250	0.3%
Sarasota County, FL	220	0.3%
All Other Locations	3,412	4.0%

Source: U.S. Census Bureau, OnTheMap Application and Longitudinal Employer-Household Dynamics program.

Home Destination Summary

Where Workers Live Who are Employed in Clay County

	Count	Share
Total Primary Jobs	52,139	100.0%
Job Counts by Counties Where Workers Live - Primary Jobs		
Clay County, FL	22,174	42.5%
Duval County, FL	14,108	27.1%
St. Johns County, FL	2,901	5.6%
Putnam County, FL	1,200	2.3%
Alachua County, FL	779	1.5%
Orange County, FL	772	1.5%
Nassau County, FL	762	1.5%
Bradford County, FL	706	1.4%
Volusia County, FL	674	1.3%
Hillsborough County, FL	655	1.3%
Flagler County, FL	515	1.0%
Marion County, FL	468	0.9%
Columbia County, FL	421	0.8%
Pinellas County, FL	408	0.8%
Baker County, FL	401	0.8%
Seminole County, FL	361	0.7%
Pasco County, FL	307	0.6%
Polk County, FL	297	0.6%
Brevard County, FL	267	0.5%
Broward County, FL	236	0.5%
Lake County, FL	228	0.4%
Miami-Dade County, FL	211	0.4%
Leon County, FL	208	0.4%
Palm Beach County, FL	204	0.4%
Osceola County, FL	174	0.3%
All Other Locations	2,702	5.2%

Source: U.S. Census Bureau, OnTheMap Application and Longitudinal Employer-Household Dynamics program.

**Florida Department of Economic Opportunity
Bureau of Workforce Statistics and Economic Research
(WSER)**

**Caldwell Building
MSC G-020
107 E. Madison Street
Tallahassee, Florida 32399-4111
Phone (850) 245-7257**



www.floridajobs.org/labor-market-information