

Hurricane Michael Labor Shed Analysis Bay County

Summary of Employment, Demographics, and
Commuting Patterns



**FLORIDA DEPARTMENT *of*
ECONOMIC OPPORTUNITY**

October 2018

Contents

Labor Shed Analysis 3

OnTheMap, Census Bureau..... 3

Florida Department of Economic Opportunity, Bureau of Workforce Statistics and Economic Research (WSER) 3

Executive Summary 4

People QuickFacts 5

Business and Geography QuickFacts 7

Labor Force, Employment, and Unemployment 7

Population 7

Where Workers Work in Bay County 8

Work Area Profile Summary 9

Work Area Profile Summary - Demographics 10

Where Workers Live in Bay County 11

Home Area Profile Summary 12

Home Area Profile Summary - Demographics 13

Labor Inflow/Outflow Map 14

Labor Inflow/Outflow Summary 15

Work Destination Summary 17

Home Destination Summary 18

Labor Shed Analysis

A labor shed analysis is defined as where workers work and where workers live relative to a user-defined selection area. This analysis helps to determine where a labor market draws its commuting workers. Labor shed studies can draw comparisons between various geographies including state, Congressional District, Metropolitan Statistical Area (MSA), county, Workforce Investment Area (WIA), Zip Code, and Census tract. By indicating how many of the selection area workers work outside the area, labor sheds can help identify potential pools of workers who would be available for work in the user-defined area.

Labor shed studies provide economic developers and existing or prospective employers a tool to understand the local labor market and make informed expansion and site selection decisions. In addition, labor shed studies can help indicate potential impacts from environmental, social, or economic incidents.

OnTheMap, Census Bureau

OnTheMap is a mapping and reporting tool developed by the U.S. Census Bureau showing employment and home locations of workers with companion reports for user-defined areas. It is the first synthetic data product released by the Census Bureau. OnTheMap is an important tool for Florida to perform labor inflow/outflow analyses and provide commuting data to planning and economic development agencies as well as Regional Workforce Boards. OnTheMap data is also used by the Department of Economic Opportunity to help quantify natural disaster impacts for emergency management agencies based on where workers live and where they work.

OnTheMap integrates existing data from state-supplied administrative records on workers and employers with existing federal censuses, surveys, and other administrative records. The state Labor Market Information (LMI) agencies supply key data from unemployment wage records and from businesses each quarter. The Census Bureau merges the state-supplied data with current demographic information to produce the data found in OnTheMap. By combining data from different administrative sources, censuses, and surveys, the Census Bureau produces local employment information that was not previously available.

Florida Department of Economic Opportunity, Bureau of Workforce Statistics and Economic Research (WSER)

The Florida Department of Economic Opportunity, Bureau of Workforce Statistics and Economic Research, produces, analyzes, and distributes labor statistics to improve economic decision making. These data are produced as part of the federal/state cooperative statistical program with the U.S. Department of Labor, Bureau of Labor Statistics, and the Employment and Training Administration.

Executive Summary

The analysis of workforce and demographic characteristics, including commuting patterns of Bay County was conducted to provide economic data on the population and labor force living or working in the county. The report is useful for detailing where workers work and live in order to align resources. This report includes population, labor force, and demographics for Bay County.

Workers employed in Bay County are clustered in the Accommodation and Food Services (16.1%), and Retail Trade (14.9%) industries. Workers living in Bay County are concentrated in the Accommodation and Food Services (15.9%), and Retail Trade (14.6%) industries.

A detailed examination of commuting patterns for Bay County shows that the county has a net inflow of 3,225 workers. Using the latest annual Census data available, there were 70,048 workers employed in Bay County and 66,823 workers living in Bay County. Of the workers who lived in the county, 16,711 workers (25.0%) were employed outside the county.

With 25.0% of workers who reside in Bay County employed outside the county, Bay County had the 5th lowest outflow rate, among Florida counties. Glades County (85.3%) had the highest outflow rate, followed by Gilchrist County (79.7%), and Jefferson County (79.7%). Leon County (18.6%), Miami-Dade County (20.7%), and Alachua County (24.9%) had the lowest worker outflow rates.

Of the 16,711 Bay County workers employed outside the county, the top destination counties are Okaloosa County (2,306 workers), Walton County (2,260 workers), and Escambia County (1,994 workers). Of the 19,936 Bay County workers living outside the county, the top origin counties are Okaloosa County (2,166 workers), Washington County (1,923 workers), and Walton County (1,730 workers).

Bay County

People QuickFacts

| | Bay County | Florida | United States |
|--|------------|------------|---------------|
| Population | | | |
| Population estimates, July 1, 2017, (V2017) | 183,563 | 20,984,400 | 325,719,178 |
| Population estimates base, April 1, 2010, (V2017) | 168,852 | 18,804,594 | 308,758,105 |
| Population, percent change - April 1, 2010 (estimates base) to July 1, 2017, (V2017) | 8.7% | 11.6% | 5.5% |
| Population, Census, April 1, 2010 | 168,852 | 18,801,310 | 308,745,538 |
| Age and Sex | | | |
| Persons under 5 years, percent | 6.2% | 5.4% | 6.1% |
| Persons under 18 years, percent | 21.6% | 20.0% | 22.6% |
| Persons 65 years and over, percent | 16.8% | 20.1% | 15.6% |
| Female persons, percent | 50.3% | 51.1% | 50.8% |
| Race and Hispanic Origin | | | |
| White alone, percent(a) | 82.1% | 77.4% | 76.6% |
| Black or African American alone, percent(a) | 11.5% | 16.9% | 13.4% |
| American Indian and Alaska Native alone, percent(a) | 0.8% | 0.5% | 1.3% |
| Asian alone, percent(a) | 2.3% | 2.9% | 5.8% |
| Native Hawaiian and Other Pacific Islander alone, percent(a) | 0.2% | 0.1% | 0.2% |
| Two or More Races, percent | 3.2% | 2.1% | 2.7% |
| Hispanic or Latino, percent(b) | 6.6% | 25.6% | 18.1% |
| White alone, not Hispanic or Latino, percent | 76.6% | 54.1% | 60.7% |
| Population Characteristics | | | |
| Veterans, 2012-2016 | 22,344 | 1,480,133 | 19,535,341 |
| Foreign born persons, percent, 2012-2016 | 5.5% | 19.9% | 13.2% |
| Legend | | | |
| The vintage year (e.g., V2016) refers to the final year of the series (2010 thru 2016). Different vintage years of estimates are not comparable. | | | |
| Fact Notes | | | |
| (a) Includes persons reporting only one race | | | |
| (b) Hispanics may be of any race, so also are included in applicable race categories | | | |
| (c) Economic Census - Puerto Rico data are not comparable to U.S. Economic Census data | | | |
| Value Flags | | | |
| "-" No or too few sample observations were available to compute an estimate. | | | |
| "D" Suppressed to avoid disclosure of confidential information | | | |
| "F" Fewer than 25 firms | | | |
| "NA" Not available | | | |
| "S" Suppressed; does not meet publication standards | | | |
| "Z" Value greater than zero but less than half unit of measure shown | | | |

Source: U.S. Census Bureau, State & County QuickFacts.

Bay County

People QuickFacts (continued)

| | Bay County | Florida | United States |
|--|------------|-------------|---------------|
| Housing | | | |
| Housing units, July 1, 2017, (V2017) | 102,811 | 9,441,153 | 137,403,460 |
| Owner-occupied housing unit rate, 2012-2016 | 61.7% | 64.8% | 63.6% |
| Median value of owner-occupied housing units, 2012-2016 | \$162,500 | \$166,800 | \$184,700 |
| Median selected monthly owner costs -with a mortgage, 2012-2016 | \$1,340 | \$1,422 | \$1,491 |
| Median selected monthly owner costs -without a mortgage, 2012-2016 | \$393 | \$466 | \$462 |
| Median gross rent, 2012-2016 | \$943 | \$1,032 | \$949 |
| Building permits, 2017 | 1,654 | 122,719 | 1,281,977 |
| Families & Living Arrangements | | | |
| Households, 2012-2016 | 67,939 | 7,393,262 | 117,716,237 |
| Persons per household, 2012-2016 | 2.59 | 2.64 | 2.64 |
| Living in same house 1 year ago, percent of persons age 1 year+, 2012-2016 | 79.9% | 83.9% | 85.2% |
| Language other than English spoken at home, percent of persons age 5 years+, 2012-2016 | 6.8% | 28.3% | 21.1% |
| Education | | | |
| High school graduate or higher, percent of persons age 25 years+, 2012-2016 | 88.7% | 87.2% | 87.0% |
| Bachelor's degree or higher, percent of persons age 25 years+, 2012-2016 | 22.5% | 27.9% | 30.3% |
| Health | | | |
| With a disability, under age 65 years, percent, 2012-2016 | 13.1% | 8.6% | 8.6% |
| Persons without health insurance, under age 65 years, percent | 14.5% | 15.9% | 10.2% |
| Economy | | | |
| In civilian labor force, total, percent of population age 16 years+, 2012-2016 | 59.7% | 58.5% | 63.1% |
| In civilian labor force, female, percent of population age 16 years+, 2012-2016 | 56.1% | 54.3% | 58.3% |
| Total accommodation and food services sales, 2012 (\$1,000)(c) | 565,165 | 49,817,925 | 708,138,598 |
| Total health care and social assistance receipts/revenue, 2012 (\$1,000)(c) | 1,034,384 | 124,061,425 | 2,040,441,203 |
| Total manufacturers shipments, 2012 (\$1,000)(c) | 1,473,839 | 96,924,106 | 5,696,729,632 |
| Total merchant wholesaler sales, 2012 (\$1,000)(c) | 514,829 | 252,626,608 | 5,208,023,478 |
| Total retail sales, 2012 (\$1,000)(c) | 2,728,227 | 273,867,145 | 4,219,821,871 |
| Total retail sales per capita, 2012(c) | \$15,871 | \$14,177 | \$13,443 |
| Transportation | | | |
| Mean travel time to work (minutes), workers age 16 years+, 2012-2016 | 22.9 | 26.7 | 26.1 |
| Income & Poverty | | | |
| Median household income (in 2016 dollars), 2012-2016 | \$48,577 | \$48,900 | \$55,322 |
| Per capita income in past 12 months (in 2016 dollars), 2012-2016 | \$25,695 | \$27,598 | \$29,829 |
| Persons in poverty, percent | 14.9% | 14.0% | 12.3% |
| Legend | | | |
| The vintage year (e.g., V2016) refers to the final year of the series (2010 thru 2016). Different vintage years of estimates are not comparable. | | | |
| <i>Fact Notes</i> | | | |
| (a) Includes persons reporting only one race | | | |
| (b) Hispanics may be of any race, so also are included in applicable race categories | | | |
| (c) Economic Census - Puerto Rico data are not comparable to U.S. Economic Census data | | | |
| <i>Value Flags</i> | | | |
| "-." No or too few sample observations were available to compute an estimate. | | | |
| "D" Suppressed to avoid disclosure of confidential information | | | |
| "F" Fewer than 25 firms | | | |
| "NA" Not available | | | |
| "S" Suppressed; does not meet publication standards | | | |
| "Z" Value greater than zero but less than half unit of measure shown | | | |

Source: U.S. Census Bureau, State & County QuickFacts.

Bay County

Business and Geography QuickFacts

| | Bay County | Florida | United States |
|---|------------|-------------------|---------------|
| Businesses | | | |
| Total employer establishments, 2016 | 4,627 | 546,218 | 7,757,807 |
| Total employment, 2016 | 61,535 | 8,169,642 | 126,752,238 |
| Total annual payroll, 2016 (\$1,000) | 2,124,763 | 363,336,322 | 6,435,142,055 |
| Total employment, percent change, 2015-2016 | -2.6% | 5.0% ¹ | 2.1% |
| Total nonemployer establishments, 2016 | 13,923 | 2,053,914 | 24,813,048 |
| All firms, 2012 | 12,985 | 2,100,187 | 27,626,360 |
| Men-owned firms, 2012 | 6,634 | 1,084,885 | 14,844,597 |
| Women-owned firms, 2012 | 4,738 | 807,817 | 9,878,397 |
| Minority-owned firms, 2012 | 2,304 | 926,112 | 7,952,386 |
| Nonminority-owned firms, 2012 | 10,043 | 1,121,749 | 18,987,918 |
| Veteran-owned firms, 2012 | 1,657 | 185,756 | 2,521,682 |
| Nonveteran-owned firms, 2012 | 10,436 | 1,846,686 | 24,070,685 |
| Geography | | | |
| Population per square mile, 2010 | 222.6 | 350.6 | 87.4 |
| Land area in square miles, 2010 | 758.46 | 53,624.76 | 3,531,905.43 |
| FIPS Code | 12005 | 12 | 00 |

Source: U.S. Census Bureau, State & County QuickFacts.

Labor Force, Employment, and Unemployment

| | August 2018 | | | | August 2017 | | | |
|---------------------|-------------|-------------|--------------|----------|-------------|-------------|--------------|----------|
| | LABOR | EMPLOY- | UNEMPLOYMENT | | LABOR | EMPLOY- | UNEMPLOYMENT | |
| | FORCE | MENT | LEVEL | RATE (%) | FORCE | MENT | LEVEL | RATE (%) |
| Workforce Region 04 | 103,026 | 99,549 | 3,477 | 3.4 | 101,852 | 97,784 | 4,068 | 4.0 |
| Bay County | 91,980 | 88,895 | 3,085 | 3.4 | 90,828 | 87,175 | 3,653 | 4.0 |
| Franklin County | 4,791 | 4,622 | 169 | 3.5 | 4,862 | 4,692 | 170 | 3.5 |
| Gulf County | 6,255 | 6,032 | 223 | 3.6 | 6,162 | 5,917 | 245 | 4.0 |
| Florida | 10,191,000 | 9,808,000 | 383,000 | 3.8 | 10,106,000 | 9,666,000 | 439,000 | 4.3 |
| United States | 161,909,000 | 155,539,000 | 6,370,000 | 3.9 | 160,863,000 | 153,576,000 | 7,287,000 | 4.5 |

Source: U.S. Department of Labor, Bureau of Labor Statistics, Local Area Unemployment Statistics.

Population

| | Population Estimate (as of July 1) | | | | | | |
|---------------------|------------------------------------|-------------|-------------|-------------|-------------|-------------|-------------|
| | 2011 | 2012 | 2013 | 2014 | 2015 | 2016 | 2017 |
| Workforce Region 04 | 196,750 | 199,132 | 202,028 | 205,871 | 208,808 | 210,891 | 211,450 |
| Bay County | 169,521 | 171,755 | 174,626 | 178,221 | 181,184 | 182,992 | 183,563 |
| Franklin County | 11,469 | 11,608 | 11,519 | 11,644 | 11,684 | 11,799 | 11,727 |
| Gulf County | 15,760 | 15,769 | 15,883 | 16,006 | 15,940 | 16,100 | 16,160 |
| Florida | 19,097,369 | 19,341,327 | 19,584,927 | 19,897,747 | 20,268,567 | 20,656,589 | 20,984,400 |
| United States | 311,644,280 | 313,993,272 | 316,234,505 | 318,622,525 | 321,039,839 | 323,405,935 | 325,719,178 |

Source: U.S. Census Bureau, Population Division.

Bay County

Where Workers Work in Bay County



Source: U.S. Census Bureau, OnTheMap Application and Longitudinal Employer-Household Dynamics program.

Map Legend

Job Density [Jobs/Sq. Mile]

- 5 - 430
- 431 - 1,708
- 1,709 - 3,838
- 3,839 - 6,819
- 6,820 - 10,653

Job Count [Jobs/Census Block]

- 1 - 6
- 7 - 93
- 94 - 469
- 470 - 1,480
- 1,481 - 3,614

Selection Areas

- ✦ Analysis Selection

Bay County

Work Area Profile Summary

| | Count | Share |
|--|--------|--------|
| Total Primary Jobs | 70,048 | 100.0% |
| Jobs by Worker Age | | |
| Age 29 or younger | 16,748 | 23.9% |
| Age 30 to 54 | 37,821 | 54.0% |
| Age 55 or older | 15,479 | 22.1% |
| Jobs by Earnings | | |
| \$1,250 per month or less | 17,503 | 25.0% |
| \$1,251 to \$3,333 per month | 30,828 | 44.0% |
| More than \$3,333 per month | 21,717 | 31.0% |
| Jobs by NAICS Industry Sector | | |
| Agriculture, Forestry, Fishing and Hunting | 217 | 0.3% |
| Mining, Quarrying, and Oil and Gas Extraction | 24 | 0.0% |
| Utilities | 203 | 0.3% |
| Construction | 4,166 | 5.9% |
| Manufacturing | 3,570 | 5.1% |
| Wholesale Trade | 2,329 | 3.3% |
| Retail Trade | 10,414 | 14.9% |
| Transportation and Warehousing | 1,738 | 2.5% |
| Information | 1,051 | 1.5% |
| Finance and Insurance | 1,580 | 2.3% |
| Real Estate and Rental and Leasing | 2,208 | 3.2% |
| Professional, Scientific, and Technical Services | 4,064 | 5.8% |
| Management of Companies and Enterprises | 197 | 0.3% |
| Administration & Support, Waste Management and Remediation | 5,132 | 7.3% |
| Educational Services | 5,114 | 7.3% |
| Health Care and Social Assistance | 9,827 | 14.0% |
| Arts, Entertainment, and Recreation | 1,286 | 1.8% |
| Accommodation and Food Services | 11,307 | 16.1% |
| Other Services (excluding Public Administration) | 2,027 | 2.9% |
| Public Administration | 3,594 | 5.1% |

Source: U.S. Census Bureau, OnTheMap Application and Longitudinal Employer-Household Dynamics program.

Bay County

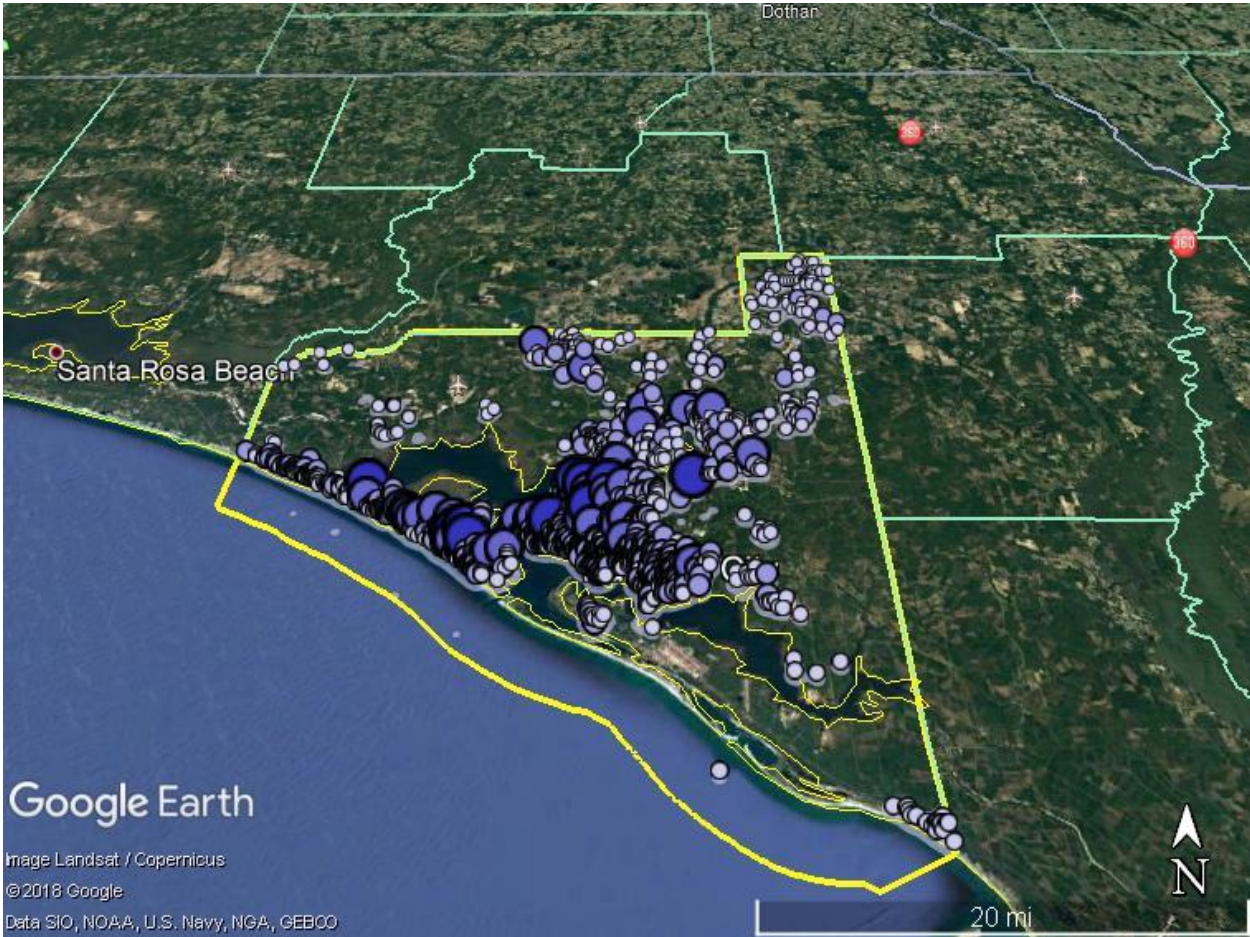
Work Area Profile Summary - Demographics

| Jobs by Worker Race | | |
|---|--------|-------|
| White Alone | 58,213 | 83.1% |
| Black or African American Alone | 8,930 | 12.7% |
| American Indian or Alaska Native Alone | 474 | 0.7% |
| Asian Alone | 1,337 | 1.9% |
| Native Hawaiian or Other Pacific Islander Alone | 79 | 0.1% |
| Two or More Race Groups | 1,015 | 1.4% |
| Jobs by Worker Ethnicity | | |
| Not Hispanic or Latino | 66,466 | 94.9% |
| Hispanic or Latino | 3,582 | 5.1% |
| Jobs by Worker Educational Attainment | | |
| Less than high school | 7,168 | 10.2% |
| High school or equivalent, no college | 16,669 | 23.8% |
| Some college or Associate degree | 17,473 | 24.9% |
| Bachelor's degree or advanced degree | 11,990 | 17.1% |
| Educational attainment not available (workers aged 29 or younger) | 16,748 | 23.9% |
| Jobs by Worker Sex | | |
| Male | 35,538 | 50.7% |
| Female | 34,510 | 49.3% |

Source: U.S. Census Bureau, OnTheMap Application and Longitudinal Employer-Household Dynamics program.

Bay County

Where Workers Live in Bay County



Source: U.S. Census Bureau, OnTheMap Application and Longitudinal Employer-Household Dynamics program.

Map Legend

- Job Density [Jobs/Sq. Mile]**
- 5 - 91
 - 92 - 349
 - 350 - 779
 - 780 - 1,381
 - 1,382 - 2,156

- Job Count [Jobs/Census Block]**
- 1 - 5
 - 6 - 39
 - 40 - 131
 - 132 - 310
 - 311 - 606

- Selection Areas**
- 📍 Analysis Selection

Bay County

Home Area Profile Summary

| | Count | Share |
|--|--------|--------|
| Total Primary Jobs | 66,823 | 100.0% |
| Jobs by Worker Age | | |
| Age 29 or younger | 15,786 | 23.6% |
| Age 30 to 54 | 36,219 | 54.2% |
| Age 55 or older | 14,818 | 22.2% |
| Jobs by Earnings | | |
| \$1,250 per month or less | 16,416 | 24.6% |
| \$1,251 to \$3,333 per month | 29,462 | 44.1% |
| More than \$3,333 per month | 20,945 | 31.3% |
| Jobs by NAICS Industry Sector | | |
| Agriculture, Forestry, Fishing and Hunting | 282 | 0.4% |
| Mining, Quarrying, and Oil and Gas Extraction | 102 | 0.2% |
| Utilities | 261 | 0.4% |
| Construction | 3,935 | 5.9% |
| Manufacturing | 3,229 | 4.8% |
| Wholesale Trade | 2,448 | 3.7% |
| Retail Trade | 9,789 | 14.6% |
| Transportation and Warehousing | 1,671 | 2.5% |
| Information | 1,051 | 1.6% |
| Finance and Insurance | 1,628 | 2.4% |
| Real Estate and Rental and Leasing | 1,774 | 2.7% |
| Professional, Scientific, and Technical Services | 3,674 | 5.5% |
| Management of Companies and Enterprises | 313 | 0.5% |
| Administration & Support, Waste Management and Remediation | 4,765 | 7.1% |
| Educational Services | 5,173 | 7.7% |
| Health Care and Social Assistance | 8,939 | 13.4% |
| Arts, Entertainment, and Recreation | 1,272 | 1.9% |
| Accommodation and Food Services | 10,623 | 15.9% |
| Other Services (excluding Public Administration) | 1,930 | 2.9% |
| Public Administration | 3,964 | 5.9% |

Source: U.S. Census Bureau, OnTheMap Application and Longitudinal Employer-Household Dynamics program.

Bay County

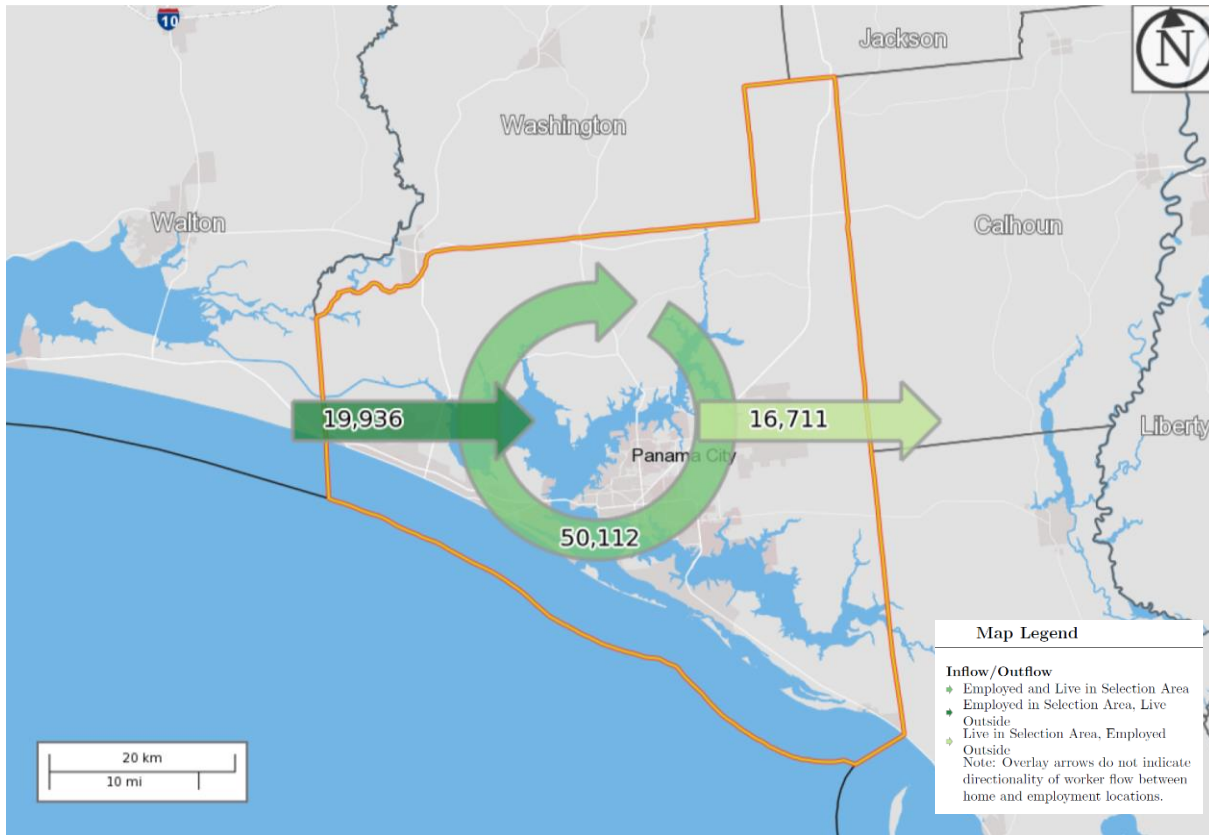
Home Area Profile Summary - Demographics

| Jobs by Worker Race | | |
|---|--------|-------|
| White Alone | 56,467 | 84.5% |
| Black or African American Alone | 7,649 | 11.4% |
| American Indian or Alaska Native Alone | 429 | 0.6% |
| Asian Alone | 1,244 | 1.9% |
| Native Hawaiian or Other Pacific Islander Alone | 63 | 0.1% |
| Two or More Race Groups | 971 | 1.5% |
| Jobs by Worker Ethnicity | | |
| Not Hispanic or Latino | 63,725 | 95.4% |
| Hispanic or Latino | 3,098 | 4.6% |
| Jobs by Worker Educational Attainment | | |
| Less than high school | 6,718 | 10.1% |
| High school or equivalent, no college | 15,861 | 23.7% |
| Some college or Associate degree | 16,707 | 25.0% |
| Bachelor's degree or advanced degree | 11,751 | 17.6% |
| Educational attainment not available (workers aged 29 or younger) | 15,786 | 23.6% |
| Jobs by Worker Sex | | |
| Male | 33,755 | 50.5% |
| Female | 33,068 | 49.5% |

Source: U.S. Census Bureau, OnTheMap Application and Longitudinal Employer-Household Dynamics program.

Bay County

Labor Inflow/Outflow Map



Source: U.S. Census Bureau, OnTheMap Application and Longitudinal Employer-Household Dynamics program.

Of the 70,048 people who are employed in Bay County, 50,112 (71.5%) live and work in the county. There are 19,936 (28.5%) workers who live outside Bay County and work within the county. Of the 66,823 workers who live within Bay County, 16,711 (25.0%) residents work outside the county. There is a net inflow of 3,225 workers into Bay County.

Bay County

Labor Inflow/Outflow Summary

| Selection Area Labor Market Size (Primary Jobs) | Count | Share |
|--|--------------|--------------|
| Employed in the Selection Area | 70,048 | 100.0% |
| Living in the Selection Area | 66,823 | 95.4% |
| Net Job Inflow (+) or Outflow (-) | 3,225 | - |
| In-Area Labor Force Efficiency (Primary Jobs) | | |
| Living in the Selection Area | 66,823 | 100.0% |
| Living and Employed in the Selection Area | 50,112 | 75.0% |
| Living in the Selection Area but Employed Outside | 16,711 | 25.0% |
| In-Area Employment Efficiency (Primary Jobs) | | |
| Employed in the Selection Area | 70,048 | 100.0% |
| Employed and Living in the Selection Area | 50,112 | 71.5% |
| Employed in the Selection Area but Living Outside | 19,936 | 28.5% |
| Outflow Job Characteristics | | |
| External Jobs Filled by Residents | 16,711 | 100.0% |
| Workers Aged 29 or younger | 4,356 | 26.1% |
| Workers Aged 30 to 54 | 8,855 | 53.0% |
| Workers Aged 55 or older | 3,500 | 20.9% |
| Workers Earning \$1,250 per month or less | 4,346 | 26.0% |
| Workers Earning \$1,251 to \$3,333 per month | 6,964 | 41.7% |
| Workers Earning More than \$3,333 per month | 5,401 | 32.3% |
| Workers in the "Goods Producing" Industry Class | 1,839 | 11.0% |
| Workers in the "Trade, Transportation, and Utilities" Industry Class | 4,882 | 29.2% |
| Workers in the "All Other Services" Industry Class | 9,990 | 59.8% |

Source: U.S. Census Bureau, OnTheMap Application and Longitudinal Employer-Household Dynamics program.

Bay County

Labor Inflow/Outflow Summary (continued)

| Inflow Job Characteristics (Primary Jobs) | Count | Share |
|--|--------------|--------------|
| Internal Jobs Filled by Outside Workers | 19,936 | 100.0% |
| Workers Aged 29 or younger | 5,318 | 26.7% |
| Workers Aged 30 to 54 | 10,457 | 52.5% |
| Workers Aged 55 or older | 4,161 | 20.9% |
| Workers Earning \$1,250 per month or less | 5,433 | 27.3% |
| Workers Earning \$1,251 to \$3,333 per month | 8,330 | 41.8% |
| Workers Earning More than \$3,333 per month | 6,173 | 31.0% |
| Workers in the "Goods Producing" Industry Class | 2,268 | 11.4% |
| Workers in the "Trade, Transportation, and Utilities" Industry Class | 5,397 | 27.1% |
| Workers in the "All Other Services" Industry Class | 12,271 | 61.6% |
| Interior Flow Job Characteristics (Primary Jobs) | | |
| Internal Jobs Filled by Residents | 50,112 | 100.0% |
| Workers Aged 29 or younger | 11,430 | 22.8% |
| Workers Aged 30 to 54 | 27,364 | 54.6% |
| Workers Aged 55 or older | 11,318 | 22.6% |
| Workers Earning \$1,250 per month or less | 12,070 | 24.1% |
| Workers Earning \$1,251 to \$3,333 per month | 22,498 | 44.9% |
| Workers Earning More than \$3,333 per month | 15,544 | 31.0% |
| Workers in the "Goods Producing" Industry Class | 5,709 | 11.4% |
| Workers in the "Trade, Transportation, and Utilities" Industry Class | 9,287 | 18.5% |
| Workers in the "All Other Services" Industry Class | 35,116 | 70.1% |

Source: U.S. Census Bureau, OnTheMap Application and Longitudinal Employer-Household Dynamics program.

Work Destination Summary

Where Workers are Employed Who Live in Bay County

| | Count | Share |
|---|--------|--------|
| Total Primary Jobs | 66,823 | 100.0% |
| Job Counts by Counties Where Workers are Employed - Primary Jobs | | |
| Bay County, FL | 50,112 | 75.0% |
| Okaloosa County, FL | 2,306 | 3.5% |
| Walton County, FL | 2,260 | 3.4% |
| Escambia County, FL | 1,994 | 3.0% |
| Leon County, FL | 1,469 | 2.2% |
| Santa Rosa County, FL | 657 | 1.0% |
| Washington County, FL | 576 | 0.9% |
| Jackson County, FL | 563 | 0.8% |
| Duval County, FL | 472 | 0.7% |
| Hillsborough County, FL | 448 | 0.7% |
| Gulf County, FL | 418 | 0.6% |
| Orange County, FL | 408 | 0.6% |
| Miami-Dade County, FL | 330 | 0.5% |
| Pinellas County, FL | 267 | 0.4% |
| Broward County, FL | 204 | 0.3% |
| Holmes County, FL | 183 | 0.3% |
| Calhoun County, FL | 170 | 0.3% |
| Gadsden County, FL | 166 | 0.2% |
| Alachua County, FL | 160 | 0.2% |
| Liberty County, FL | 130 | 0.2% |
| Brevard County, FL | 115 | 0.2% |
| Seminole County, FL | 113 | 0.2% |
| Palm Beach County, FL | 101 | 0.2% |
| Columbia County, FL | 95 | 0.1% |
| Franklin County, FL | 92 | 0.1% |
| All Other Locations | 3,014 | 4.5% |

Source: U.S. Census Bureau, OnTheMap Application and Longitudinal Employer-Household Dynamics program.

Home Destination Summary

Where Workers Live Who are Employed in Bay County

| | Count | Share |
|---|--------|--------|
| Total Primary Jobs | 70,048 | 100.0% |
| Job Counts by Counties Where Workers Live - Primary Jobs | | |
| Bay County, FL | 50,112 | 71.5% |
| Okaloosa County, FL | 2,166 | 3.1% |
| Washington County, FL | 1,923 | 2.7% |
| Walton County, FL | 1,730 | 2.5% |
| Escambia County, FL | 1,480 | 2.1% |
| Jackson County, FL | 1,235 | 1.8% |
| Leon County, FL | 1,115 | 1.6% |
| Gulf County, FL | 952 | 1.4% |
| Santa Rosa County, FL | 838 | 1.2% |
| Calhoun County, FL | 516 | 0.7% |
| Holmes County, FL | 507 | 0.7% |
| Miami-Dade County, FL | 411 | 0.6% |
| Wakulla County, FL | 330 | 0.5% |
| Duval County, FL | 314 | 0.4% |
| Hillsborough County, FL | 314 | 0.4% |
| Brevard County, FL | 275 | 0.4% |
| Orange County, FL | 251 | 0.4% |
| Franklin County, FL | 243 | 0.3% |
| Gadsden County, FL | 224 | 0.3% |
| Pinellas County, FL | 217 | 0.3% |
| Liberty County, FL | 195 | 0.3% |
| Broward County, FL | 184 | 0.3% |
| Alachua County, FL | 156 | 0.2% |
| Palm Beach County, FL | 156 | 0.2% |
| Jefferson County, FL | 133 | 0.2% |
| All Other Locations | 4,071 | 5.8% |

Source: U.S. Census Bureau, OnTheMap Application and Longitudinal Employer-Household Dynamics program.

**Florida Department of Economic Opportunity
Bureau of Workforce Statistics and Economic Research**

**Caldwell Building
MSC G-020
107 E. Madison Street
Tallahassee, Florida 32399-4111
Phone (850) 245-7257**



www.floridajobs.org/labor-market-information